

**280HPP CONFIGURATION OPTIONS**

**HEATED PORTABLE PROBE FILTER**

**280HPP** 280 HEATED PORTABLE PROBE FILTER - INCLUDES; ENCLOSURE, CARRYING HANDLE, HSL CONNECTORS, CLAMP, FILTER RTD, LOW TEMP ALARM. POWERED BY 115 OR 230VAC WITH INTERNAL TEMPERATURE CONTROL

**MATERIAL OF CHAMBER** (OTHER MATERIALS AVAILABLE - CONSULT THE FACTORY)

<b>SS</b>	STAINLESS STEEL
<b>HC</b>	C-276 HASTELLOY

**MOUNTING** (OTHER SIZES AVAILABLE - CONSULT THE FACTORY)

<b>3/4" NPT</b>	3/4" NPT PIPE UNION (REQUIRES A 5_5_-XXXX SERIES PROBE TUBE )
<b>1" NPT</b>	1" NPT PIPE UNION

**FLANGE** UNIVERSAL FLANGE FOR 2", 3", 4" 150# CONNECTIONS. IF A T/C IS SELECTED IT REQUIRES A 5\_5\_-XXXX SERIES PROBE TUBE IS REQUIRED

**STACK THERMOCOUPLE** (REQUIRES A FLANGE AND A 5\_5\_-XXXX SERIES PROBE TUBE)

<b>K6</b>	TYPE "K" T/C 6"
<b>K12</b>	TYPE "K" T/C 12"
<b>K18</b>	TYPE "K" T/C 18"
<b>J6</b>	TYPE "J" T/C 6"
<b>J12</b>	TYPE "J" T/C 12"
<b>J18</b>	TYPE "J" T/C 18"
<b>NTC</b>	NO STACK THERMOCOUPLE



**BLOWBACK**

<b>B24</b>	BLOWBACK 24VDC
<b>B15</b>	BLOWBACK 115VAC
<b>B23</b>	BLOWBACK 230VAC
<b>NBB</b>	NO BLOWBACK

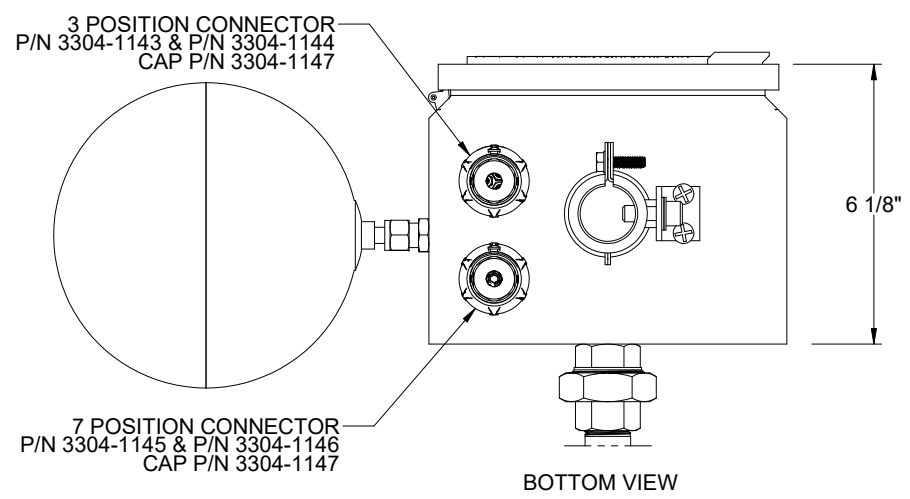
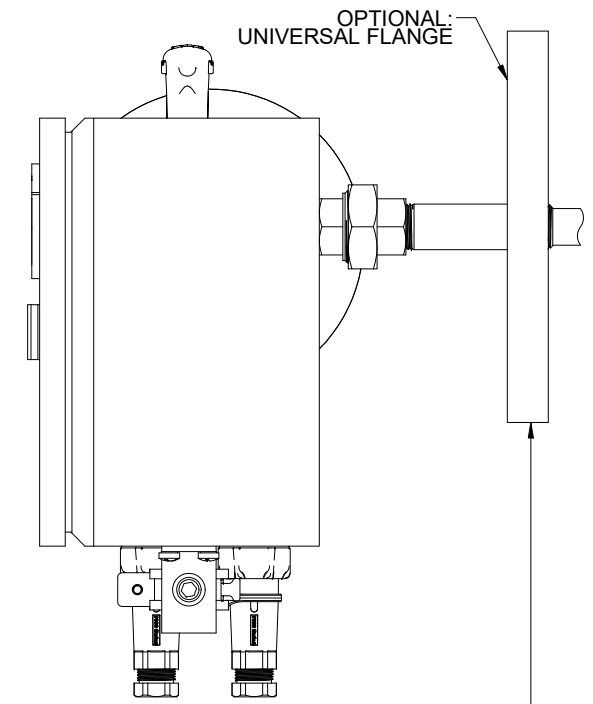
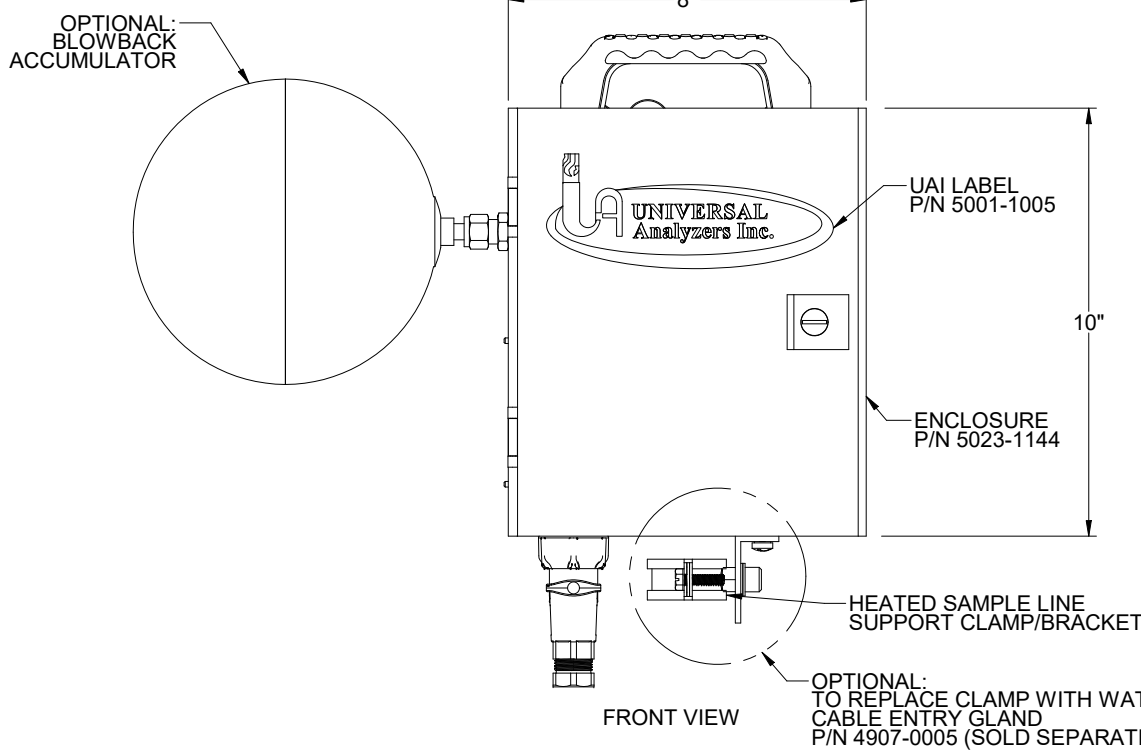
**NON-STANDARD OPTIONS**



<b>KZ</b>	KALREZ O-RINGS
<b>SN</b>	SILCONERT COATED WETTED PARTS
<b>PT</b>	PRESSURE TAP
<b>SF</b>	STAINLESS STEEL FLANGE

**280HPP - SS - FLANGE - NTC - NBB**

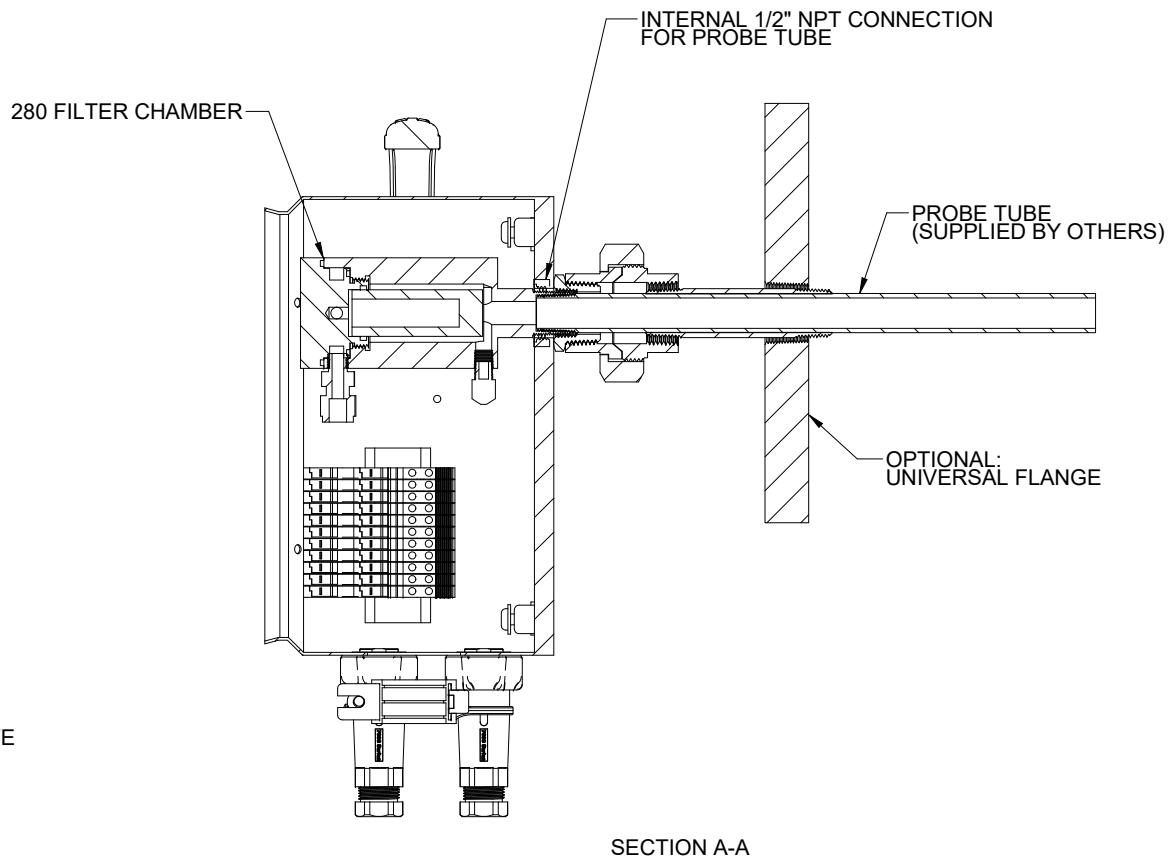
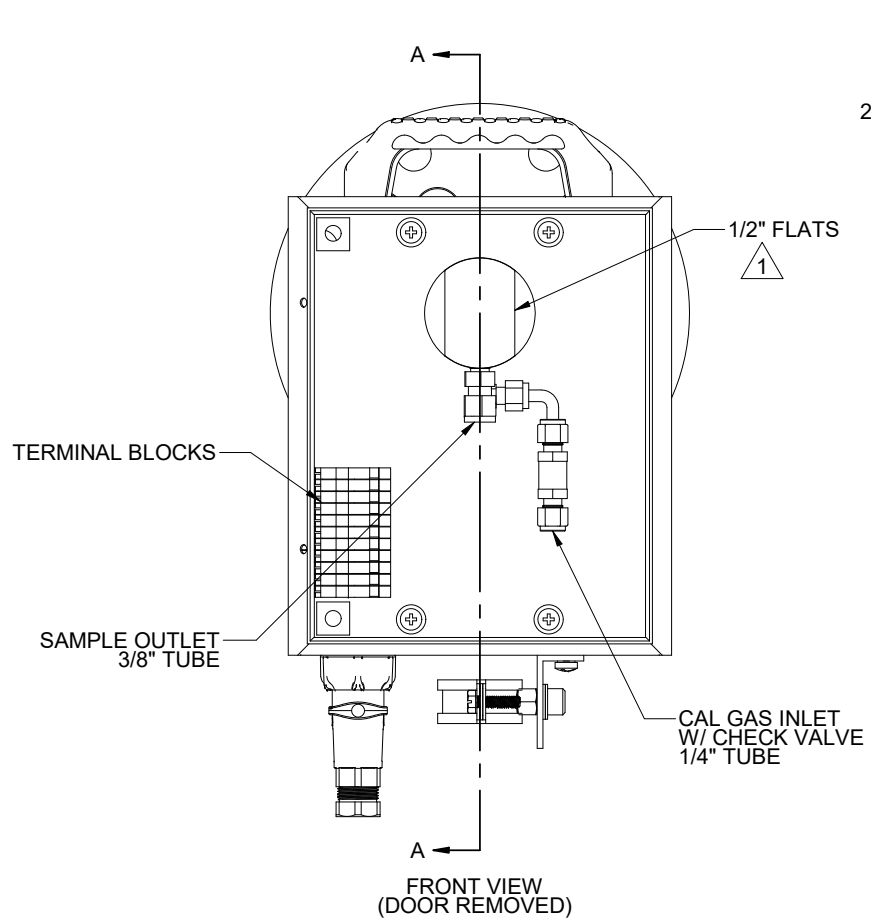
 		5200 Conner Drive Carson City, NV 89706 PH:775/883-2500 FAX:775/883-6388	A	09/09/19	REVISED PER AS BUILT	MW	GE
REV	DATE	DESCRIPTION	DWN	APVD			
<b>280 PORTABLE PROBE CONFIGURATION OPTIONS</b>							
PART NO.		FOR	DATE		SCALE	SIZE	SHEET
280HPP		-	01/10/2017		NTS	D	1 OF 12
DRAWN BY		M. Walser		ECO#		DRAWING NO.	
APVD BY		G.Evans		-		P2845	

LAYOUT WITH BLOWBACK & FLANGE



5200 Conner Drive Carson City, NV 89706 PH: 775/883-2500 FAX: 775/883-6388		A	09/09/19	REVISED PER AS BUILT	MW	GE
 		REV	DATE	DESCRIPTION	DWN	APVD
REVISIONS						
280 PORTABLE PROBE		DATE	SCALE	SIZE	SHEET	
		01/10/2017	NTS	D	2 OF 12	
PART NO.	FOR	DRAWN BY	ECO#	DRAWING NO.		
280HPP	-	M. Walser	-	P2845		
		APVD BY	G. Evans			



LAYOUT WITHOUT BLOWBACK



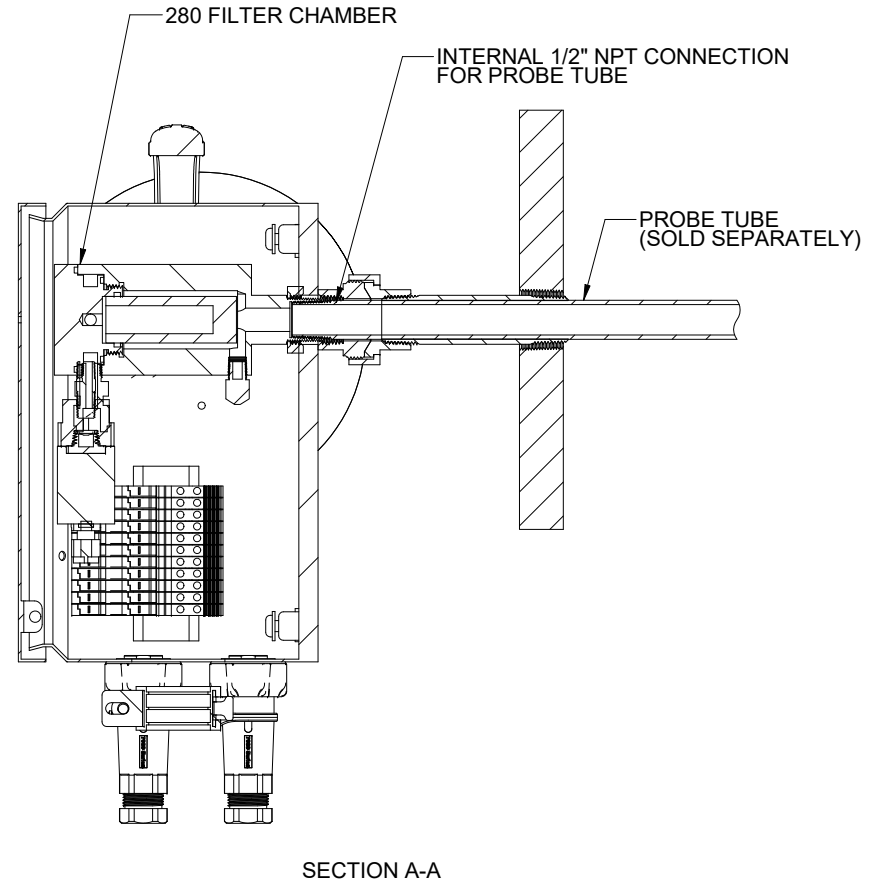
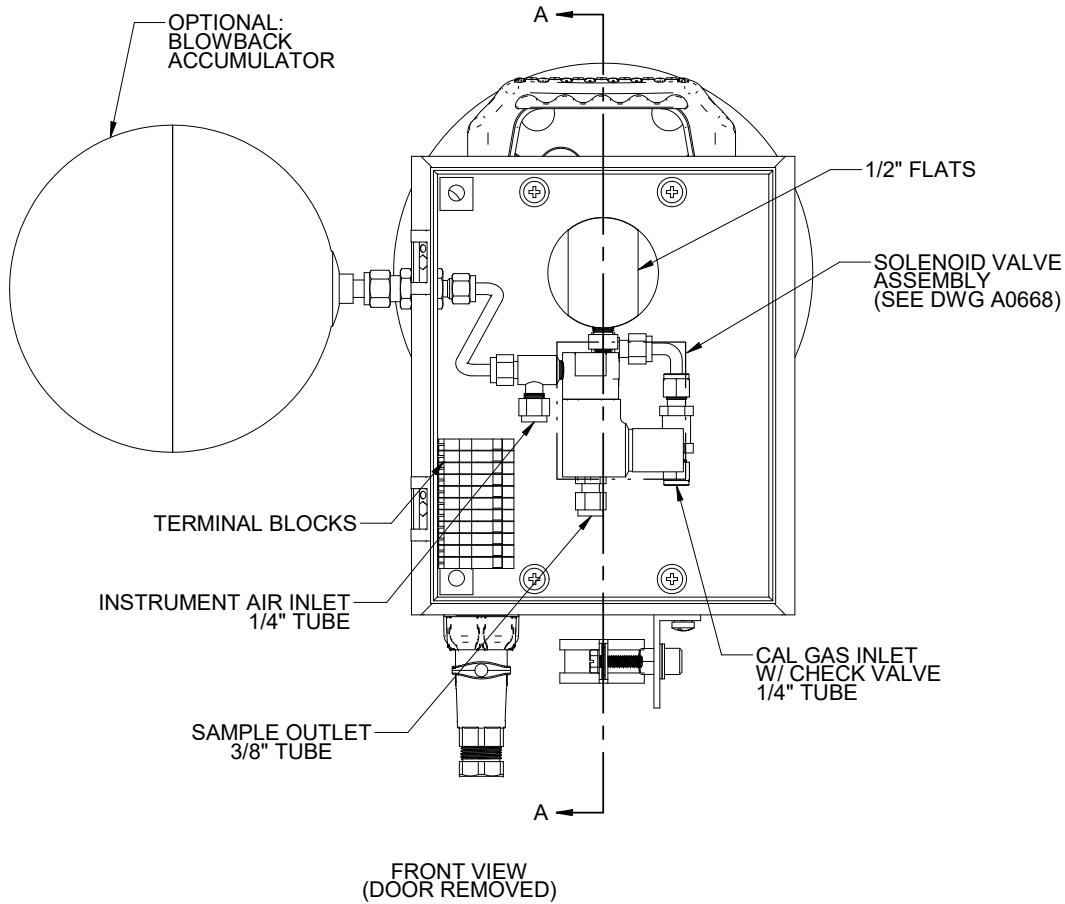
SECTION A-A



NOTES:

- 1 NEVER TIGHTEN CAP WITH WRENCH.
- 2. ACTUAL ARRANGMENTS MAY VARY.

5200 Conner Drive Carson City, NV 89706 PH(775)883-2500 FAX(775)883-6388		A	09/09/19	REVISED PER AS BUILT	MW	GE
 		REV	DATE	DESCRIPTION	DWN	APVD
		REVISIONS				
NO BLOW BACK PORTABLE PROBE INTERIOR VIEW		DATE	SCALE	SIZE	SHEET	
		01/10/2017	NTS	D	3 OF 12	
PART NO.	FOR	DRAWN BY	ECO#	DRAWING NO.		
280HPP	-	M. Walser	-	P2845		
		APVD BY	G. Evans			

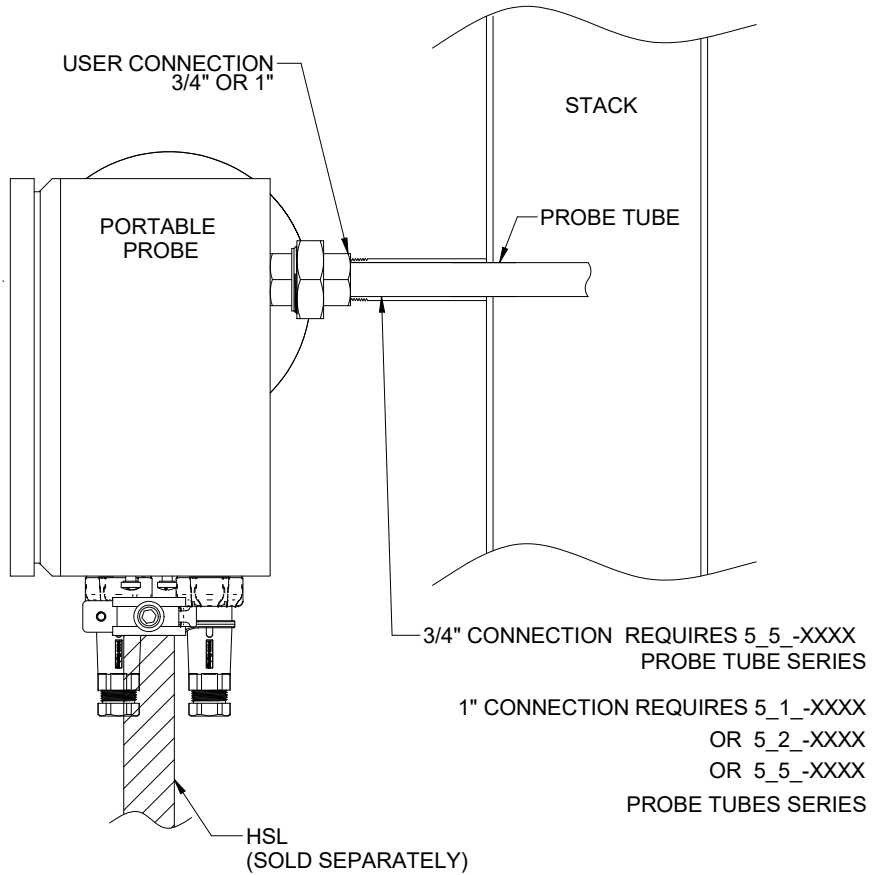
LAYOUT WITH BLOWBACK



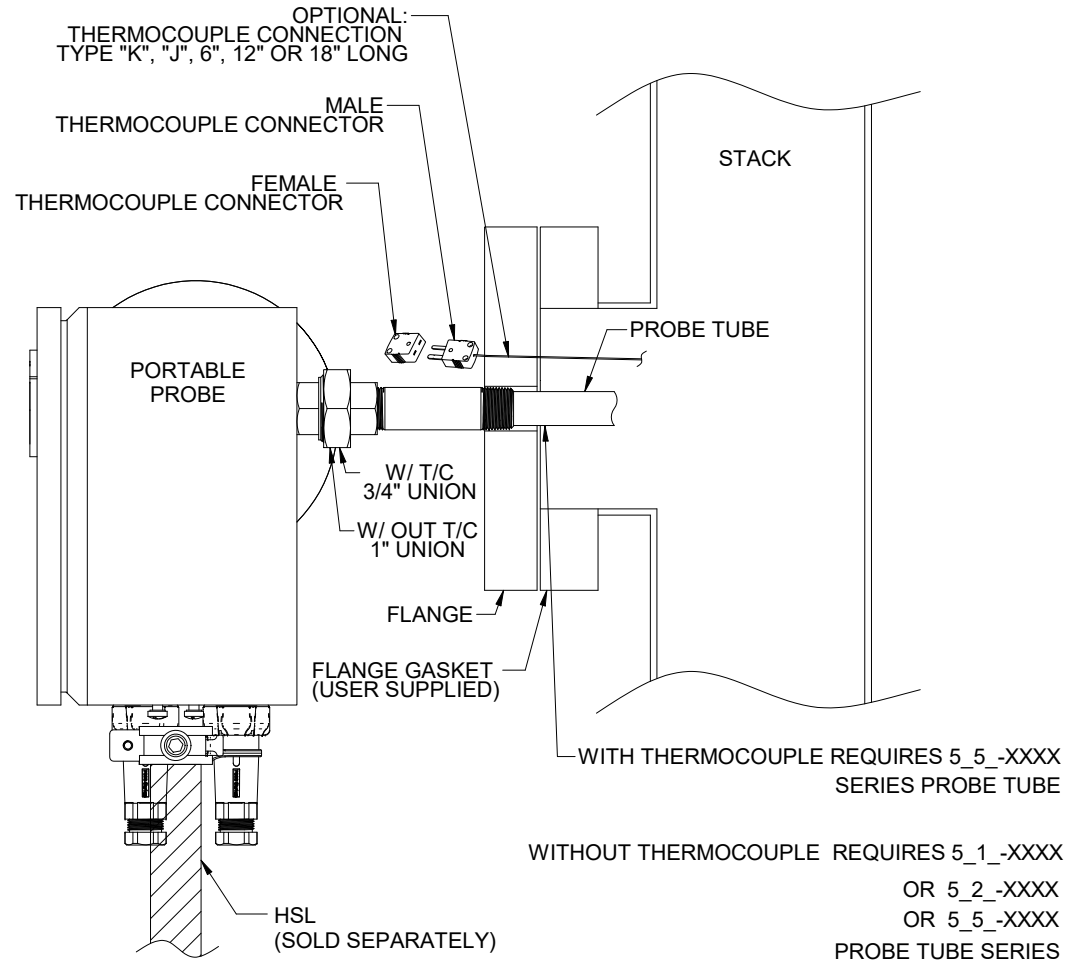
5200 Corner Drive Carson City, NV 89706 PH(775)883-2500 FAX(775)883-6388		A	09/09/19	REVISED PER AS BUILT	MW	GE
 		REV	DATE	DESCRIPTION	DWN	APVD
		PORTABLE PROBE INTERIOR VIEW				
PART NO.		FOR		DRAWN BY	ECO#	DRAWING NO.
280HPP		-		M. Walser	-	P2845
		APVD BY	G. Evans			
			DATE	SCALE	SIZE	SHEET
			01/10/2017	NTS	D	4 OF 12
REVISIONS						



MOUNTING OPTIONS

USER HAS 3/4" OR 1" MNPT CONNECTION TO SAMPLE

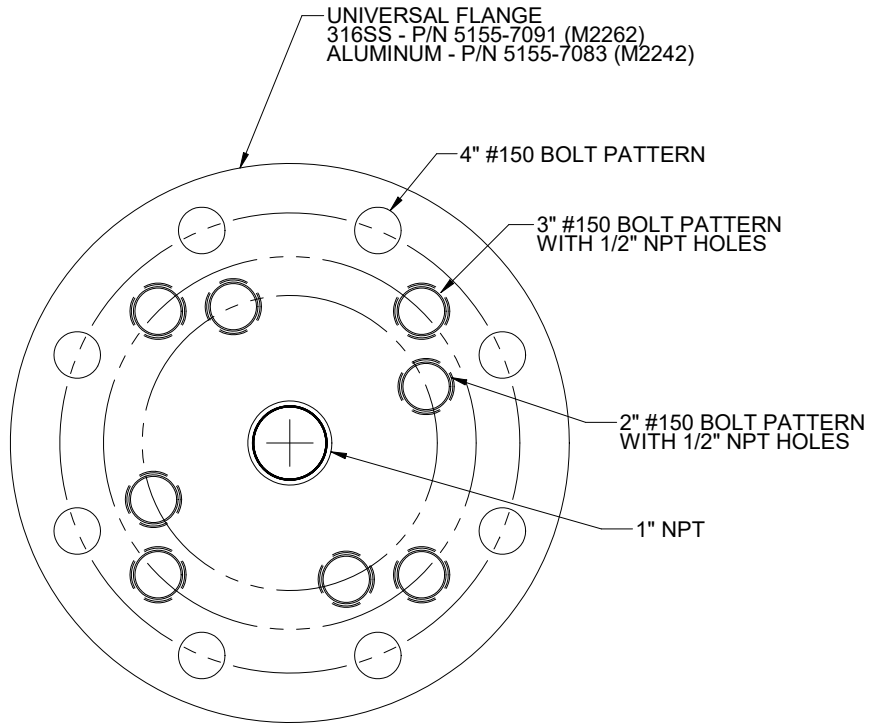


USER WITH FLANGE

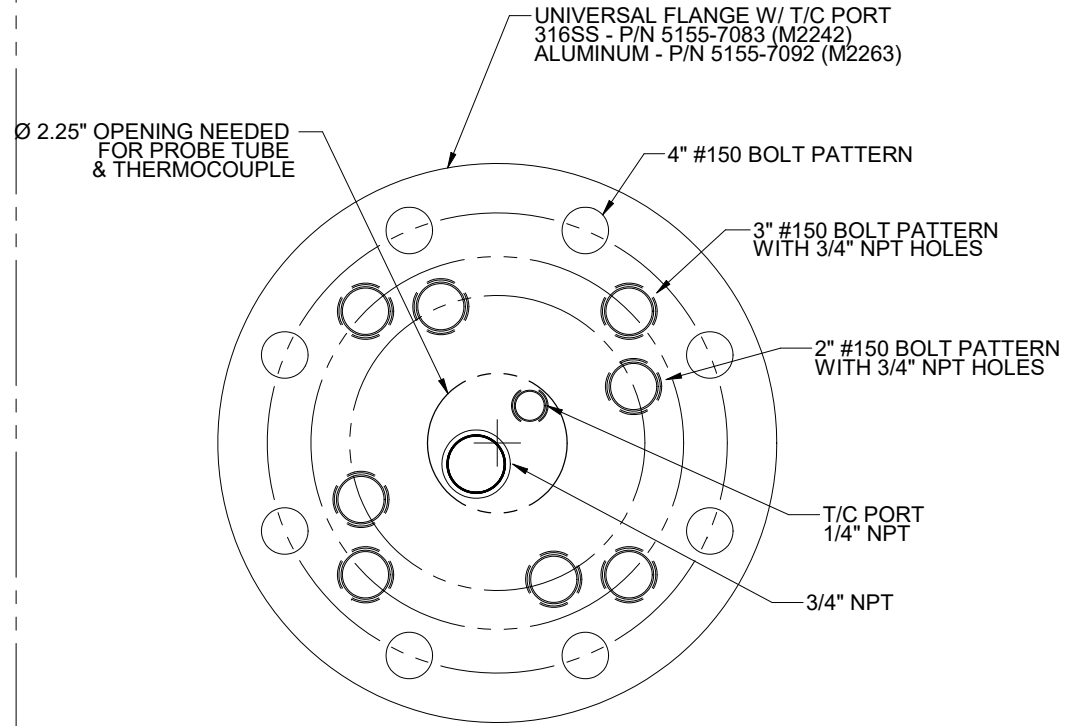


5200 Conner Drive Carson City, NV 89706 PH: 775/883-2200 FAX: 775/883-6388		A	09/09/19	REVISED PER AS BUILT	MW	GE
 		REV	DATE	DESCRIPTION	DWN	APVD
MOUNTING OPTIONS						
		REVISIONS				
		DATE	SCALE	SIZE	SHEET	
		01/10/2017	N/A	D	5 OF 12	
PART NO.	FOR	DRAWN BY	ECO#	DRAWING NO.		
280HPP	-	M. Walser	-	P2845		
		APVD BY				
		G. Evans				

FLANGE OPTION WITH NO STACK THERMOCOUPLE





FLANGE OPTION WITH STACK THERMOCOUPLE

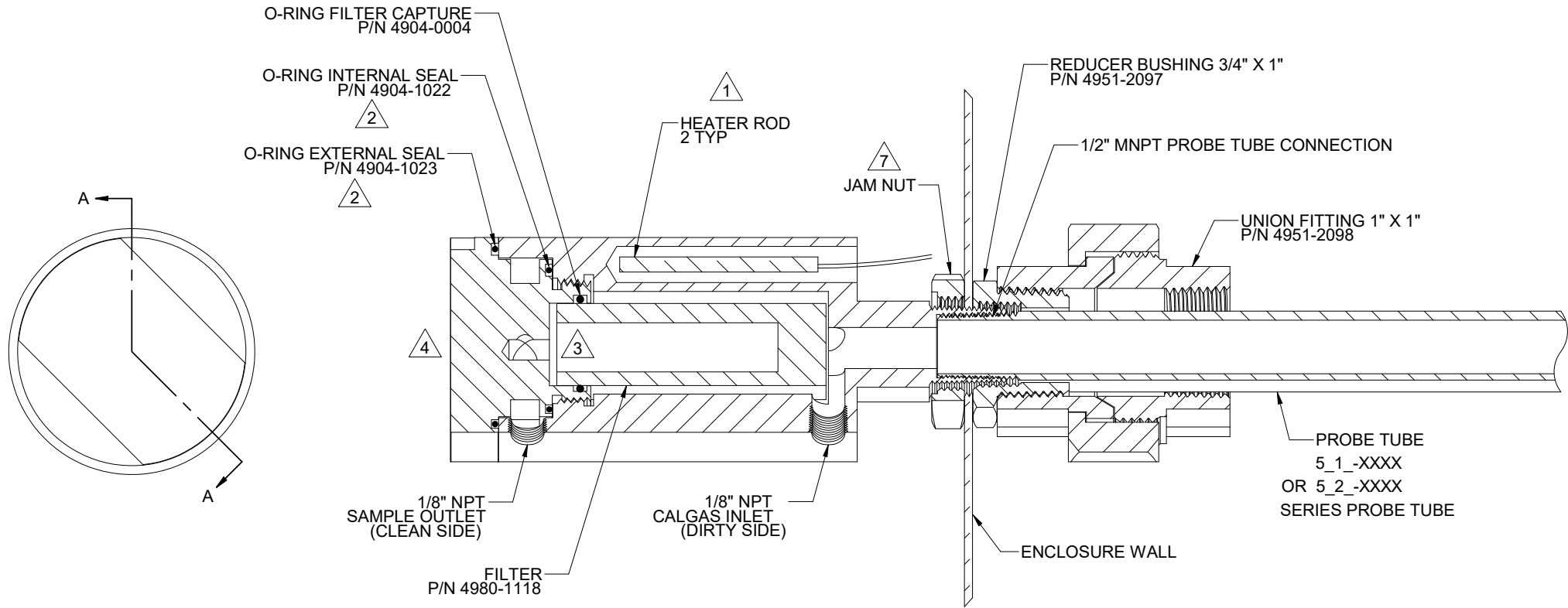


NOTES:

1. ALL 3" AND 2" PATTERN HOLES PLUGGED AT FACTORY.

5200 Conner Drive Carson City, NV 89706 PH(775)883-2200 FAX(775)883-6388		A	09/09/19	REVISED PER AS BUILT	MW	GE
 		REV	DATE	DESCRIPTION	DWN	APVD
		REVISIONS				
STACK ADAPTERS UNIVERSAL FLANGES		DATE	SCALE	SIZE	SHEET	
		01/10/2017	NTS	D	6 OF 12	
PART NO.	FOR	DRAWN BY	M. Walsler	ECO#	DRAWING NO.	
280HPP	-	APVD BY	G. Evans	-	P2845	

NO FLANGE AND 1" NPT CONNECTION



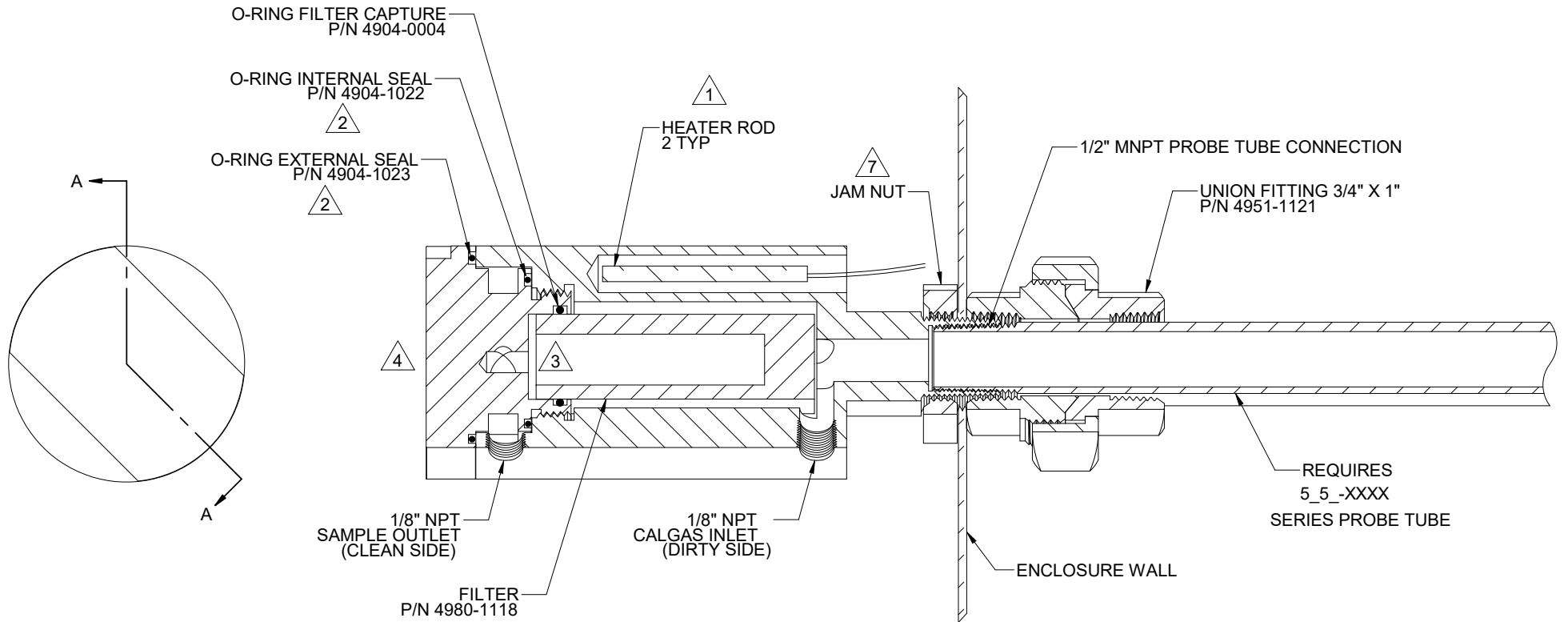
SECTION A-A

NOTES:

- 1 APPLY ZINC PASTE TO HEATER RODS AND INSERT FULLY.
- 2 APPLY SMALL AMOUNT OF O-RING LUBRICATION TO THE INTERNAL & EXTERNAL SEAL O-RINGS BEFORE INSTALLING.
- 3 OPEN END OF FILTER IS INSTALLED INSIDE THE CAP.
- 4 NEVER TIGHTEN CAP WITH WRENCH. (NO TOOLS REQUIRED)
- 5. ALWAYS ALLOW CHAMBER TO COOL BEFORE REPLACING FILTER.
- 6. INSTALL INSULATOR BODY P/N 5150-1117 AFTER ASSEMBLY IS COMPLETE.
- 7 SECURE CHAMBER TO ENCLOSURE WALL WITH JAM NUT P/N 4711-0042 AND UNION FITTING P/N 4951-2098. LARGER OPENING ON JAM NUT IS TOWARDS FILTER. TIGHTEN UNION SIDE TO CHAMBER, THEN SECURE JAM NUT. TIGHTEN TO 10FT LBS.

		A	09/09/19	REVISED PER AS BUILT	MW	GE	
5200 Convent Drive Carson City, NV 89706 PH(775)883-2500 FAX(775)883-4388		REV	DATE	DESCRIPTION	DWN	APVD	
FILTER ASSEMBLY DETAIL		REVISIONS					
PART NO. 280HPP		DATE	SCALE	SIZE	SHEET		
FOR -		01/10/2017	NTS	D	7 OF 12		
DRAWN BY M. Walser		APVD BY G. Evans		ECO#	DRAWING NO.		
-		-		-	P2845		

NO FLANGE AND 3/4" NPT CONNECTION



SECTION A-A

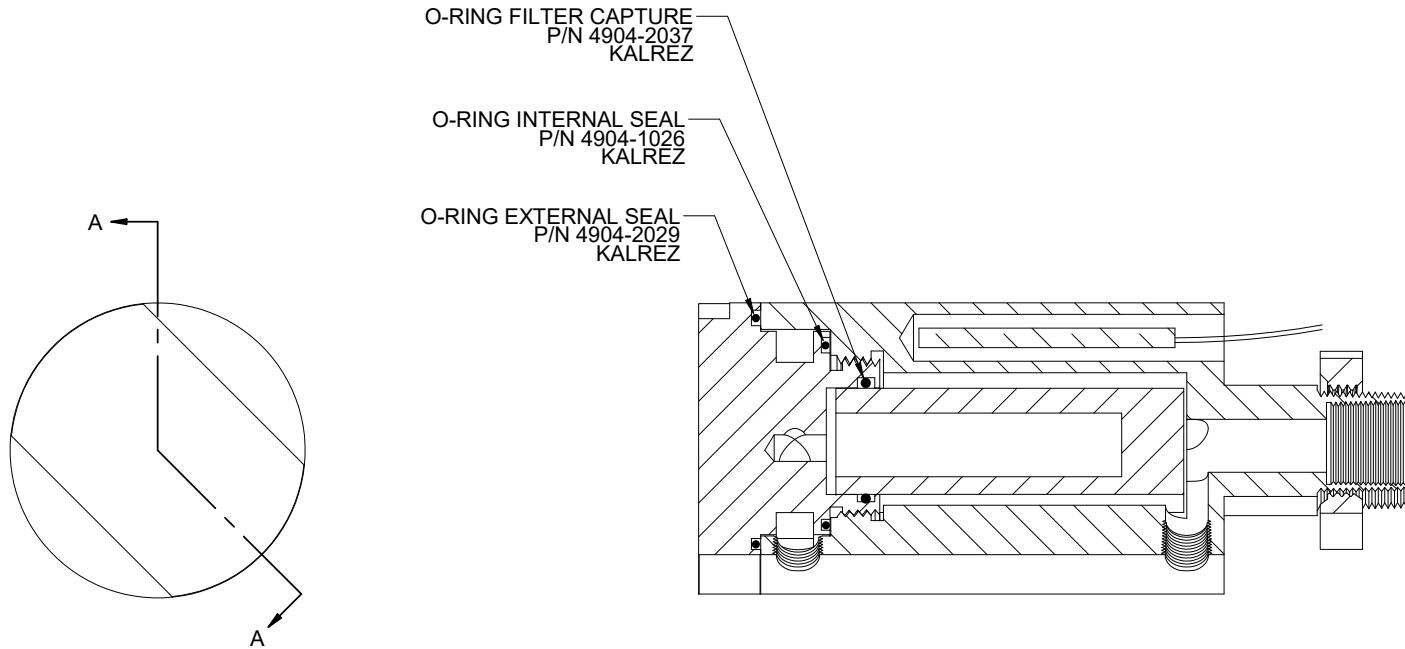
NOTES:

- 1 APPLY ZINC PASTE TO HEATER RODS AND INSERT FULLY.
- 2 APPLY SMALL AMOUNT OF O-RING LUBRICATION TO THE INTERNAL & EXTERNAL SEAL O-RINGS BEFORE INSTALLING.
- 3 OPEN END OF FILTER IS INSTALLED INSIDE THE CAP.
- 4 NEVER TIGHTEN CAP WITH WRENCH. (NO TOOLS REQUIRED)
5. ALWAYS ALLOW CHAMBER TO COOL BEFORE REPLACING FILTER.
6. INSTALL INSULATOR BODY P/N 5150-1117 AFTER ASSEMBLY IS COMPLETE.
- 7 SECURE CHAMBER TO ENCLOSURE WALL WITH JAM NUT P/N 4711-0042 AND UNION FITTING P/N 4951-2098. LARGER OPENING ON JAM NUT IS TOWARDS FILTER. TIGHTEN UNION SIDE TO CHAMBER, THEN SECURE JAM NUT. TIGHTEN TO 10FT LBS.

		A	09/09/19	Revised Per As Built	MW	GE
REV	DATE	DESCRIPTION			DWN	APVD
FILTER ASSEMBLY DETAIL						
PART NO.		FOR		DATE	SCALE	SIZE
280HPP		-		01/10/2017	NTS	D
DRAWN BY		M. Walser		ECO#	DRAWING NO.	
APVD BY		G. Evans		-	P2845	



KALREZ O-RING OPTION



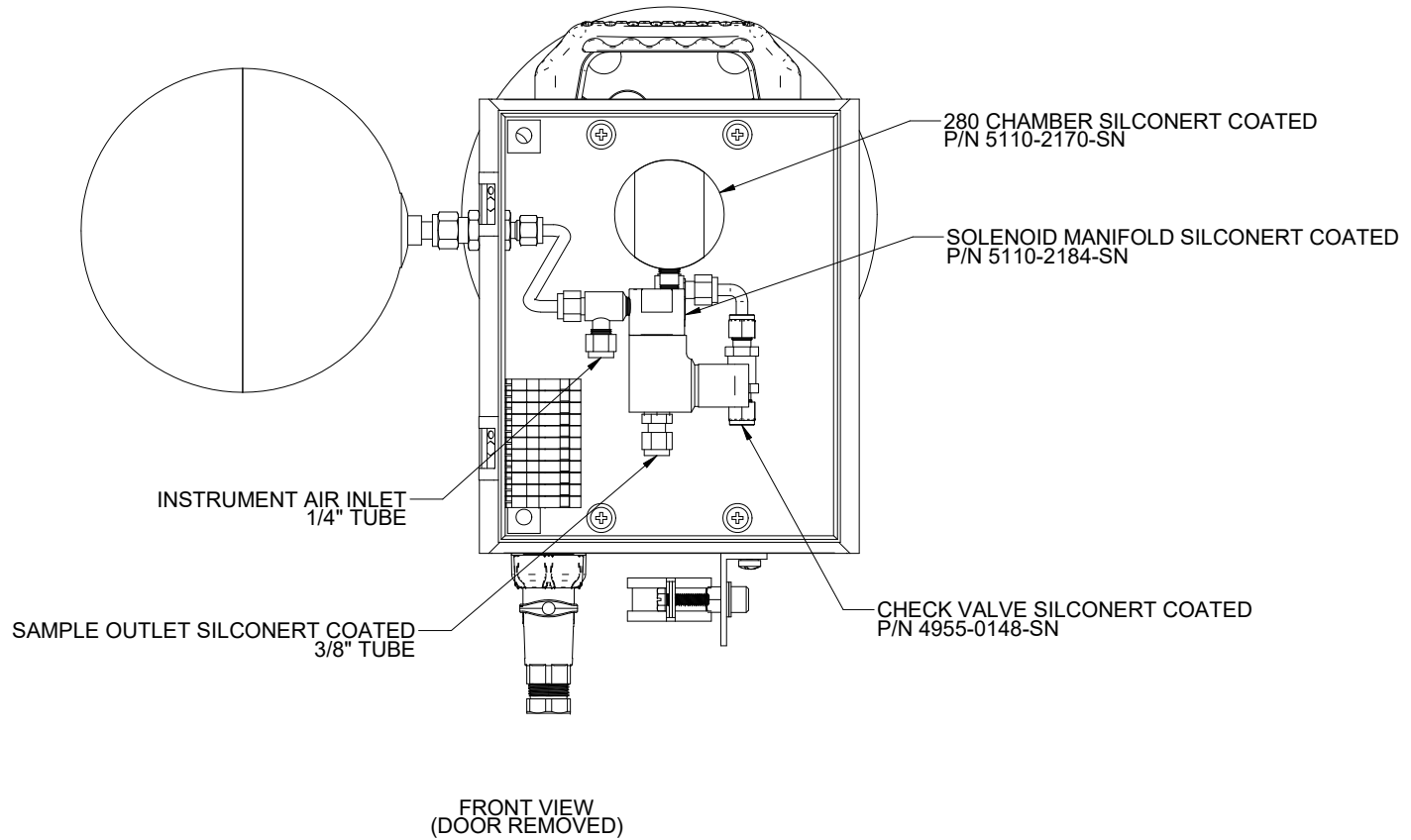
SECTION A-A

NOTES:

1. APPLY ZINC PASTE TO HEATER RODS AND INSERT FULLY.
2. APPLY SMALL AMOUNT OF O-RING LUBRICATION TO THE INTERNAL & EXTERNAL SEAL O-RINGS BEFORE INSTALLING.
3. OPEN END OF FILTER IS INSTALLED INSIDE THE CAP.
4. NEVER TIGHTEN CAP WITH WRENCH. (NO TOOLS REQUIRED)
5. ALWAYS ALLOW CHAMBER TO COOL BEFORE REPLACING FILTER.
6. INSTALL INSULATOR BODY P/N 5150-1117 AFTER ASSEMBLY IS COMPLETE.
7. SECURE CHAMBER TO ENCLOSURE WALL WITH JAM NUT P/N 4711-0042 AND UNION FITTING P/N 4951-2098. LARGER OPENING ON JAM NUT IS TOWARDS FILTER. TIGHTEN UNION SIDE TO CHAMBER, THEN SECURE JAM NUT. TIGHTEN TO 10FT LBS.



		A	09/09/19	REVISED PER AS BUILT	MW	GE
REV	DATE	DESCRIPTION			DWN	APVD
KALREZ O-RING OPTION						
PART NO.		FOR		DATE	SCALE	SIZE
280HPP		-		01/10/2017	NTS	D
DRAWN BY		M. Walser		ECO#		SHEET
APVD BY		G. Evans		-		9 OF 12
					DRAWING NO. P2845	

SILCONERT COATED WETTED PARTS OPTION

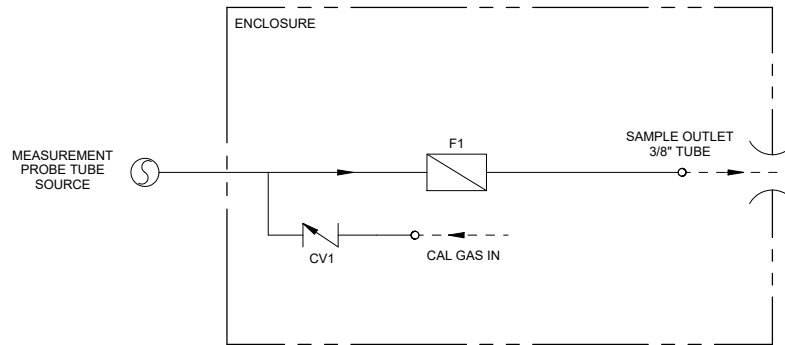


NOTES:

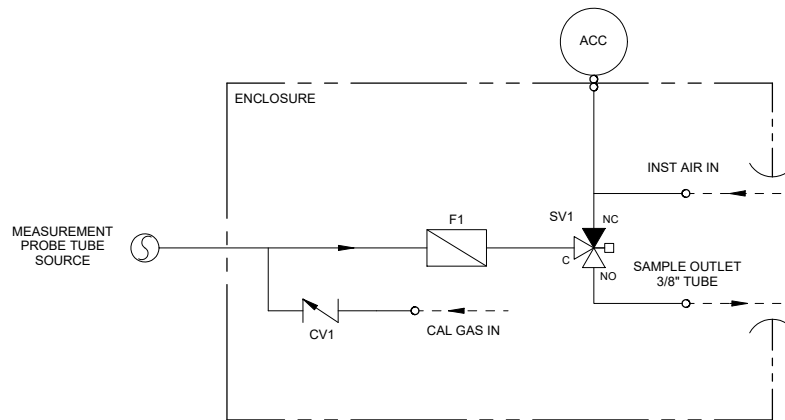
- 1). ALL WETTED METAL PARTS SHALL BE SILCONERT COATED.
- 2). ALL FITTINGS TO BE 1/4" TUBE UNLESS OTHERWISE SPECIFIED.

 		5200 Convent Drive Carson City, NV 89706 PH(775)883-2500 FAX(775)883-4388	A	09/09/19	REVISED PER AS BUILT	MW	GE
REV	DATE	DESCRIPTION			DWN	APVD	
SILCONERT COATED PARTS OPTION			REVISIONS				
DATE	SCALE	SIZE	SHEET				
01/10/2017	NTS	D	10 OF 12				
PART NO.	FOR	DRAWN BY	ECO#	DRAWING NO.			
280HPP	-	M. Walser	-	P2845			
		APVD BY					
		G. Evans					

WITHOUT BLOWBACK



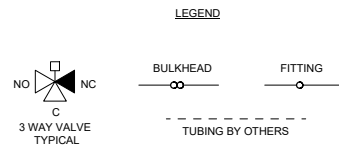
WITH BLOWBACK



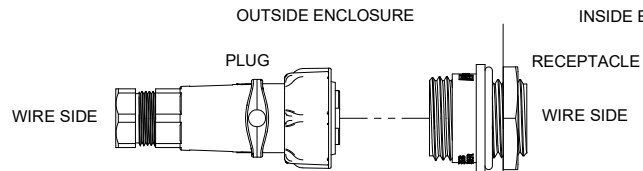
NOTES:

- 1. ALL FITTINGS TO BE 1/4" TUBE UNLESS OTHERWISE SPECIFIED.

ITEM	QTY	DESCRIPTION	PART NO.
ACC	1	ACCUMULATOR	4956-1002
CV1	1	CHECK VALVE	4955-0148
F1	1	FILTER	4980-1118
SV1	1	BLOWBACK VALVE ASSY 24VDC	4955-0000
SV1	1	BLOWBACK VALVE ASSY 115VAC (SEE DWG A0668)	5209-1275
SV1	1	BLOWBACK VALVE ASSY 24VDC-SN	4955-0000-SN
SV1	1	BLOWBACK VALVE ASSY 115VAC-SN (SEE DWG A0668)	5209-1275-SN



5200 Convent Drive Carson City, NV 89706 PH:(775)853-2500 FAX:(775)853-6388		A	09/09/19	REVISED PER AS BUILT	MW	GE
		REV	DATE	DESCRIPTION	DWN	APVD
REVISIONS						
P&ID		DATE	SCALE	SIZE	SHEET	
		01/10/2017	NTS	D	11 OF 12	
PART NO.	FOR	DRAWN BY	M. Walser	ECO#	DRAWING NO.	
280HPP	-	APVD BY	G. Evans	-	P2845	



WIRE SIDE VIEW

WIRE SIDE VIEW

NOTES:

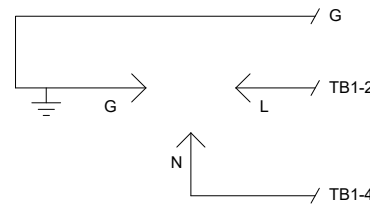
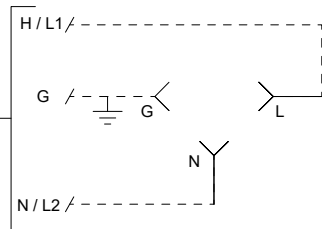
- ELECTRICAL CLASSIFICATION : GENERAL PURPOSE.
  - PTC HEATER ROD SPECIFICATION (HTR1,2)  
120/240VAC, 50WATT@75°F, 220°C CURE POINT, P/N 3014-1086  
TYPICAL CHAMBER TEMPERATURE 350° TO 390°F.
  - LOW TEMP ALARM SWITCH (TS1)  
BLUE-NORMALLY OPEN (NO) BELOW 225°F P/N 3103-0012-GP.
  - SECURE TERMINAL BLOCK / DIN RAIL TO ENCLOSURE WALL WITH #6-32 HARDWARE INCLUDING STAR WASHER AND CAP NUT (EXTERNAL).
- 5 DIODE FOR 24VDC SOLENOIDS P/N 1000-0009.  
MOV FOR VAC SOLENOIDS P/N 1010-1001.
- 6 INSTALL RTD TO MID BODY OF CHAMBER, APPROXIMATELY 90° FROM HEATER RODS.



C1F  
3 POSITION PLUG CONNECTOR  
W/ FEMALE SOCKETS  
P/N 3304-1143

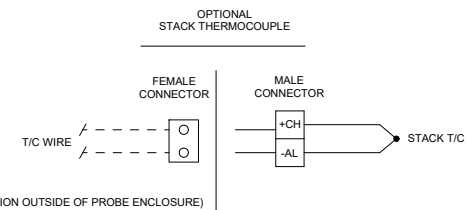
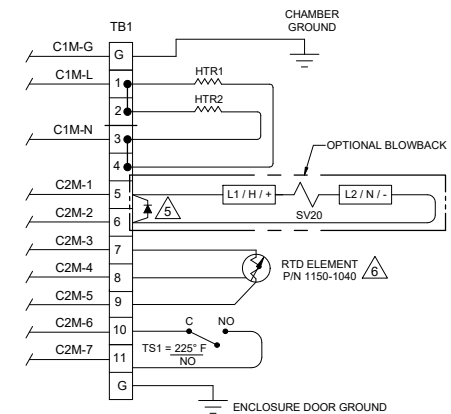
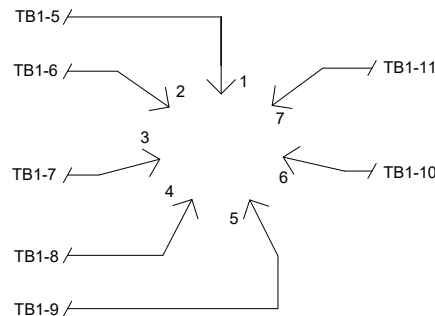
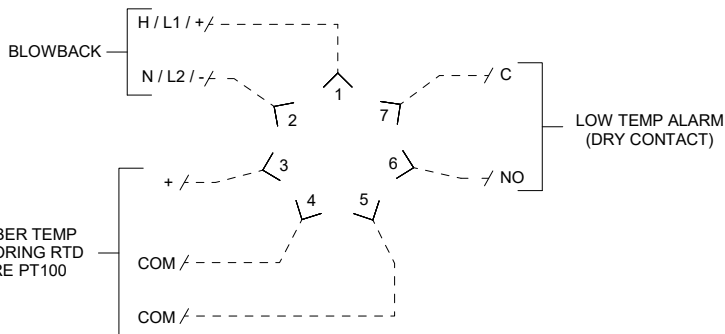
C1M  
3 POSITION RECEPTACLE CONNECTOR  
W/ MALE PINS  
P/N 3304-1144

PROBE FILTER POWER  
1A  
115 OR 230VAC



C2F  
7 POSITION PLUG CONNECTOR  
W/ FEMALE SOCKETS  
P/N 3304-1145

C2M  
7 POSITION RECEPTACLE CONNECTOR  
W/ MALE PINS  
P/N 3304-1146



		A	09/09/19	REVISED PER AS BUILT	MW	GE
REV	DATE	DESCRIPTION			DWN	APVD
ELECTRICAL WIRING W/ CONNECTORS						
DATE		SCALE	SIZE	SHEET		
01/10/2017		NTS	D	12 OF 12		
PART NO.	FOR	DRAWN BY	ECO#	DRAWING NO.		
280HPP	-	M. Walser	-	P2845		
		APVD BY				
		G. Evans				