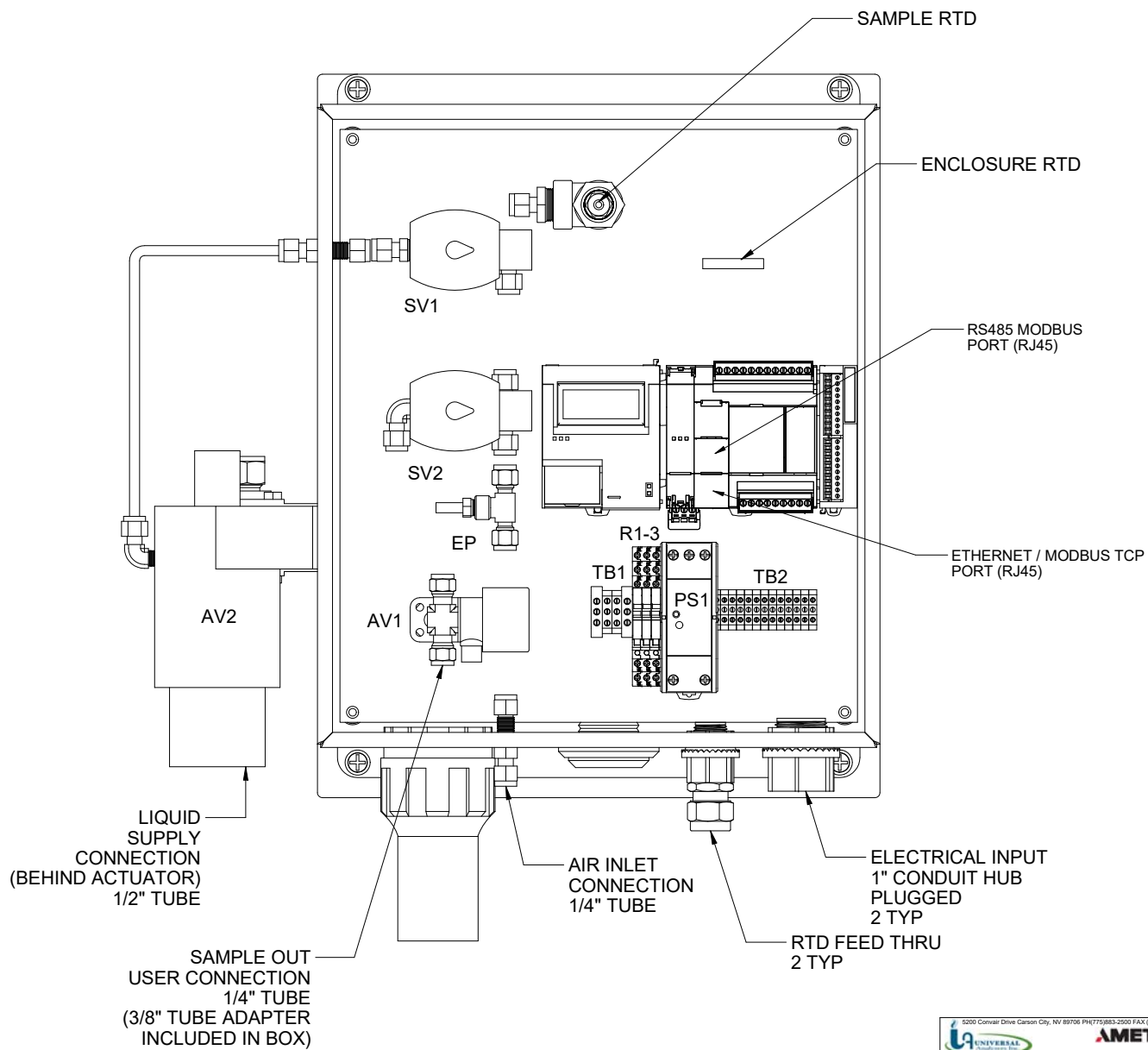




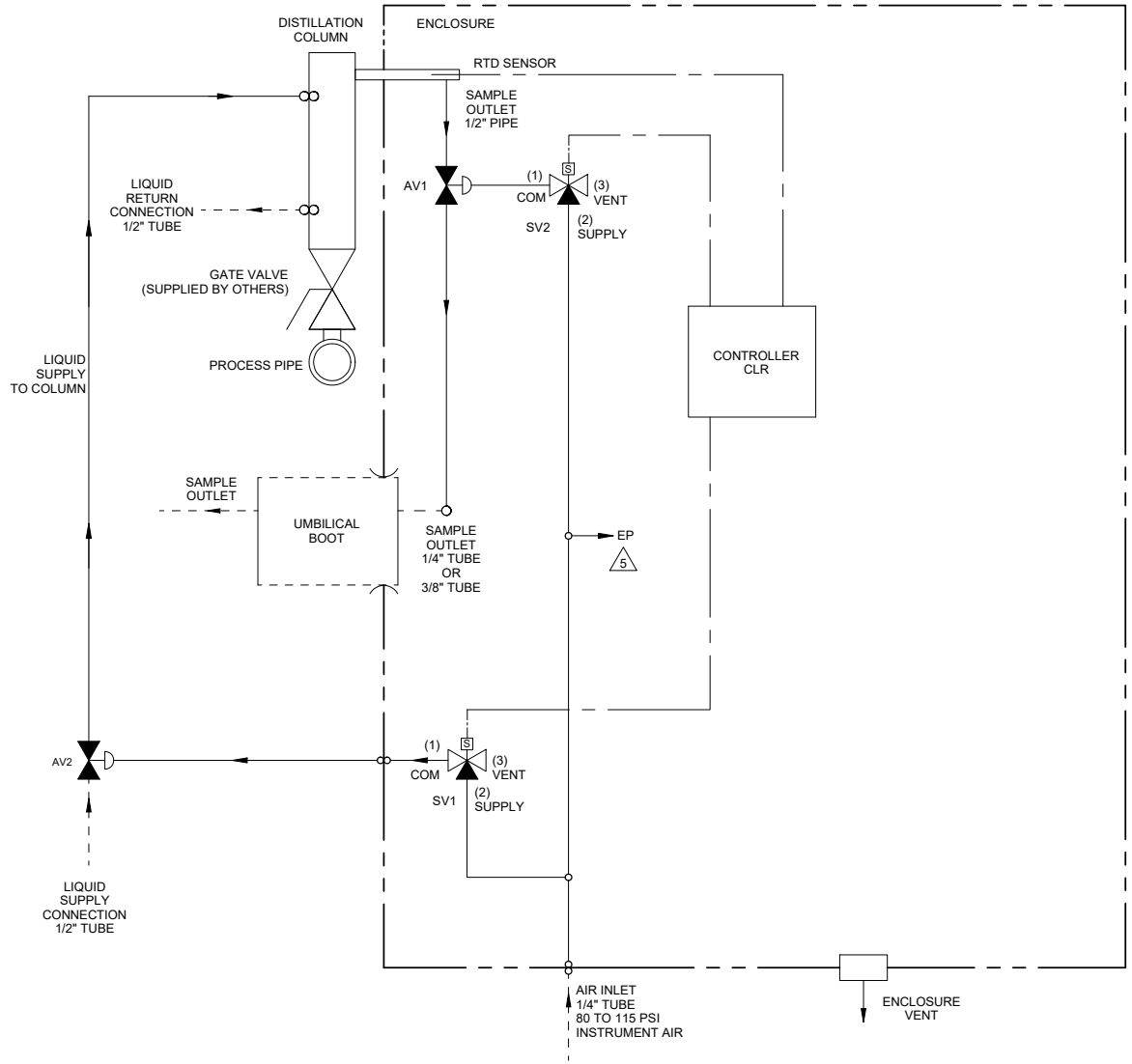
NOTES:

- 1 A 1 INCH MINIMUM WATER PIPE IS RECOMMENDED WITHIN 1 FOOT OF THE PROBE INLET VALVE. THE RETURN PIPE SHOULD BE 1/4" TO 1/2" LARGER THAN THE INLET PIPE
- 2 UNIT HEIGHT VARIES PER FLANGE OPTIONS, +1", -4"
- 3 LIFTING WEIGHT: 150LBS. NOTE THAT THE EYELET IS NOT LOCATED DIRECTLY ABOVE CENTER OF GRAVITY
- 4 HEATED SAMPLE LINE RECOMMENDED @ 140°F MINIMUM FOR MOST APPLICATIONS.
- 5 SAMPLE FLOW RECOMMENDED 1-4 L/M
- 6 CUSTOMER I.D. TAG IF SPECIFIED ON PO. GRAVOPOLY SECURED WITH SCREWS OR RIVETS. 1/2" TEXT HEIGHT, WHITE ON BLACK

5200 Convoir Drive Carson City, NV 89706 PH(775)883-2500 FAX (775)883-6388		3	04/12/17	NOTES UPDATED	CS	BW	
UNIVERSAL ANALYTICAL AMETEK		REV	DATE	DESCRIPTION	DWN/APVD		
DISTILLATION PROBE LOCAL CONTROL, LIQUID COOLED		REVISIONS					
PART NO.	FOR	DATE	SCALE	SIZE	SHEET		
1221-LC-L	-	01/05/2017	NTS	D	1 OF 4		
APVD BY		DRAWN BY	ECO#	DRAWING NO.			
		C. SHIELDS	-	P2783			
		B. WOLF	-				



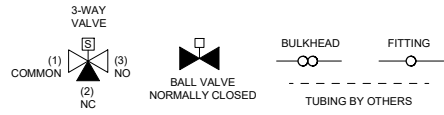
5200 Convoir Drive Carson City, NV 89706 PH(775)883-2500 FAX (775)883-6388		3	04/12/17	NOTES UPDATED	CS	BW
 		REV DATE		DESCRIPTION	DWN/APVD	
		DATE		REVISIONS	SCALE	
INTERIOR LAYOUT		01/05/2017	NTS	SIZE	SHEET	
PART NO.	FOR	DRAWN BY	C. SHIELDS	ECO#	2 OF 4	
1221-LC-L	-	APVD BY	B. WOLF	-	DRAWING NO. P2783	



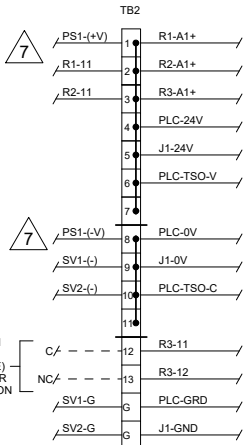
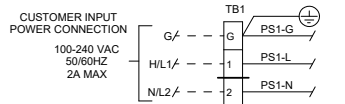
- NOTES:
1. ALL TUBING TO BE 1/4" 316SS (UNLESS OTHERWISE NOTED)
 2. ALL WETTED MATERIALS ARE STAINLESS STEEL
 3. SAMPLE TEMPERATURE SETPOINT IN PLC IS 65°F UNLESS OTHERWISE STATED ON P.O.
 4. LIQUID SUPPLY TEMPERATURE IS RECOMMENDED 20°F LESS THAN PLC SETPOINT, MINIMUM

△ ENCLOSURE PURGE FITTING (<1 L/M)

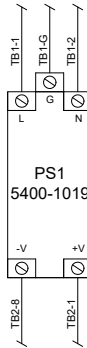
ITEM	QTY	DESCRIPTION	UAI PART NO
AV1	1	AIR ACTUATED VALVE 1/4" N.C. SPRING RETURN	4955-0109
AV2	1	AIR ACTUATED VALVE 1/2" N.C. SPRING RETURN	4955-1147
SV1,2	2	SOLENOID VALVE 3-WAY 24VDC EXP. PROOF	4955-0260
CLR	1	CONTROLLER	IDEC FC6A
EP	1	1/4" TUBE W/ SNUBBER, 2µm	4954-0177



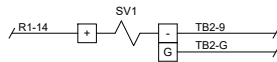
		3	04/12/17	NOTES UPDATED	CS	BW
P & ID		REV DATE		DESCRIPTION	DWN/APVD	
DATE		SCALE		SIZE	SHEET	
01/05/2017		NTS		D	3 OF 4	
DRAWN BY C. SHIELDS		ECO#		DRAWING NO.		
APVD BY B. WOLF		-		P2783		



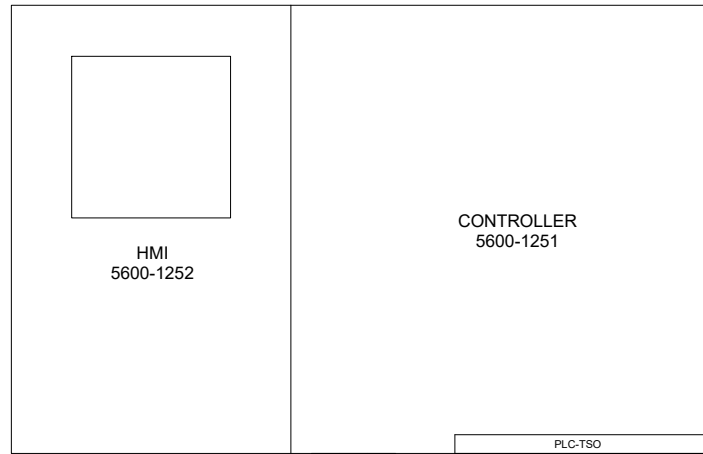
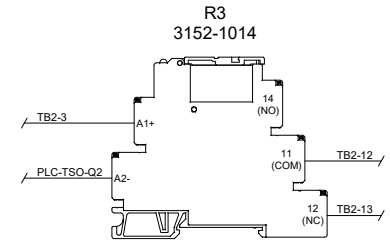
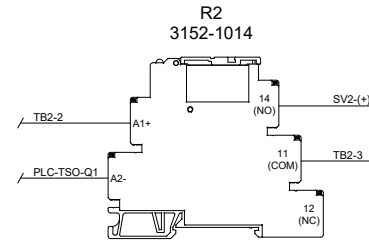
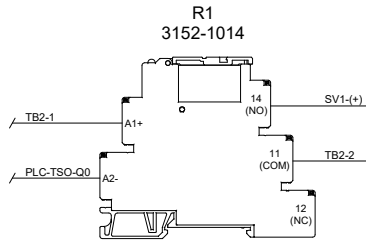
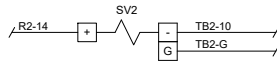
COMMON ALARM (FAILSAFE) CUSTOMER CONNECTION



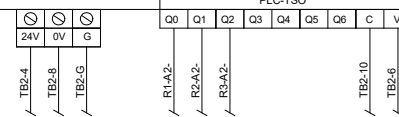
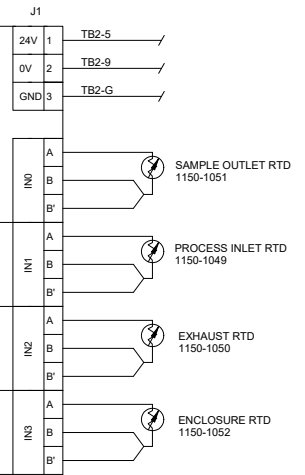
COOLANT SOLENOID



SAMPLE SHUTOFF SOLENOID



I/O 5600-1253



NOTES:

- ELECTRICAL CLASSIFICATION DESIGNED FOR CLASS 1, DIV2, GROUPS A, B, C, D. ALL ELECTRICAL COMPONENTS ARE SELF-CERTIFIED FOR HAZARDOUS AREA USAGE BY THE RESPECTIVE VENDOR. THIS ASSEMBLY HAS NOT BEEN CERTIFIED.
- WIRING SHALL BE IN ACCORDANCE WITH APPLICABLE NEC CODE. ELECTRICAL MATERIALS SHALL BE LABELED BY: UL, FM OR CSA (WIRE AND TERMINALS ONLY) THE FOLLOWING WIRE SIZES ARE EXCLUSIVE OF INTEGRATED COMPONENT WIRE SIZE. ALL WIRES: TFE 300V INSULATION, 18 AWG MINIMUM, STRANDED COPPER CONDUCTOR
- COLOR CODING:

AC	DC	SIGNAL & ALARM
H/L1 - BLACK	POSITIVE - RED	ALL - YELLOW
N/L2 - WHITE	NEGATIVE - BLUE	
GROUND - GREEN		
- POWER SUPPLY AND RELAYS SHALL BE LOCATED ON TB DIN RAIL
- ENCLOSURE DOOR SHALL BE GROUNDED TO BACK PANEL
- TB1 & TB2 SHALL BE SEGREGATED.

TO POWER WITH +24VDC, DISCONNECT PS1 AND WIRE DIRECTLY TO TB2-1 (+24V) AND TB2-8 (0V)

FIELD TO WIRE

5200 Conair Drive Carson City, NV 89706 PH:775/883-2000 FAX:775/883-6388		3	04/12/17	NOTES UPDATED	CS	BW	
		REV	DATE	DESCRIPTION	DWN	APVD	
WIRING DIAGRAM		REVISIONS					
PART NO.	FOR	DATE	SCALE	SIZE	SHEET		
1221-LC-L	-	01/05/2017	NTS	D	4 OF 4		
		DRAWN BY	ECO#	APVD BY	DRAWING NO.		
		C. SHIELDS	-	B. WOLF	P2783		