

LIFTING EYELET 3

INLET MANIFOLD RTD

2 53"

LIQUID INLET CONNECTION 1  
1/2" TUBE

LIQUID OUTLET CONNECTION 1  
1/2" TUBE

PROCESS INLET RTD  
1/8" BORED THRU FITTING 7  
4954-1092-SW-BT

GATE VALVE  
(CUSTOMER SUPPLIED)

2" OR 3" SAMPLE BOOT  
SHRINK FIT  
TO UMBILICAL 4

FLANGE OPTIONS:  
- 2", 2.5", OR 3"  
- 150#, 300#, OR 600#  
- 316SS

PROCESS PIPE

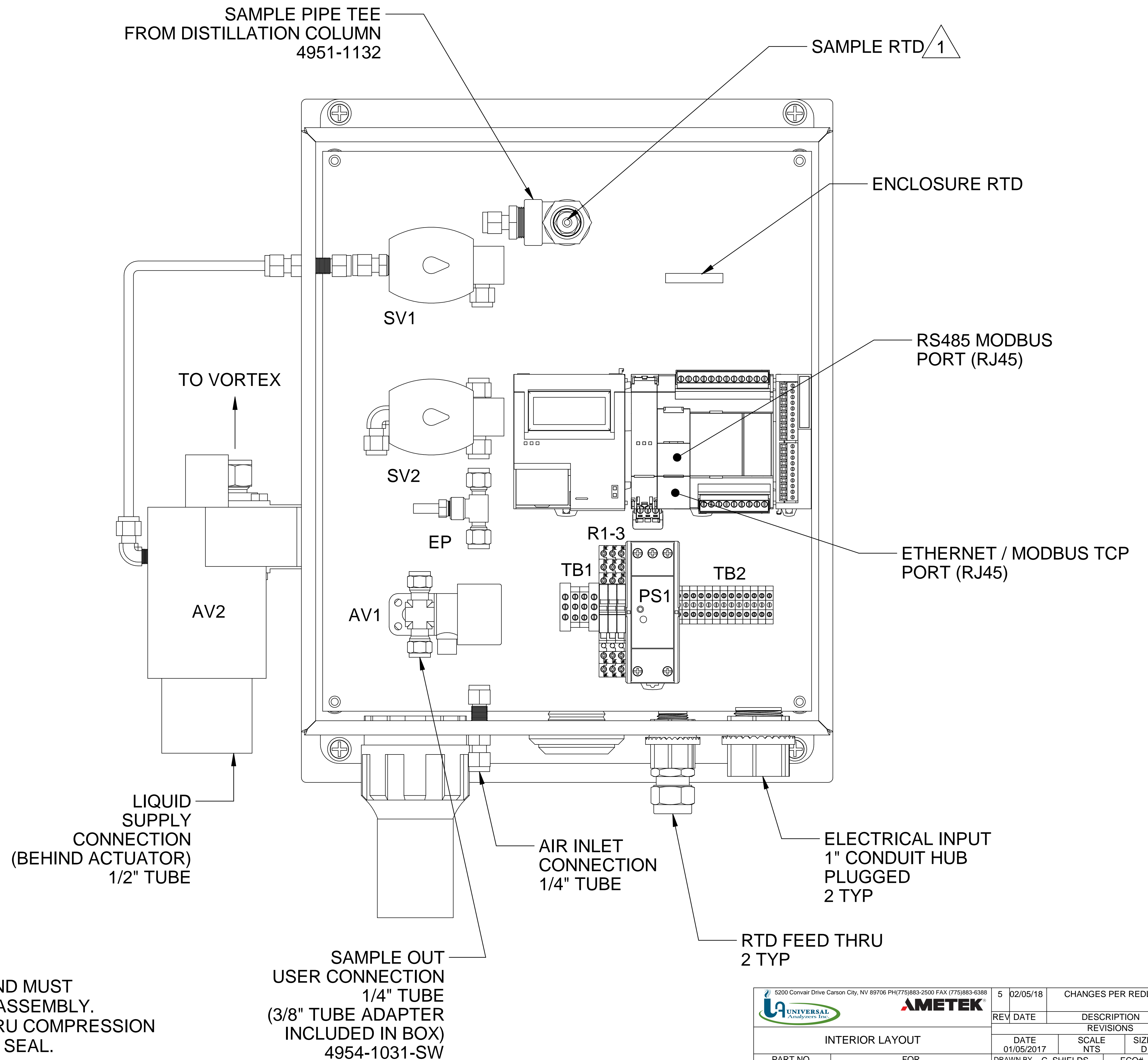
NOTES:

- 1 A 1 INCH MINIMUM WATER PIPE IS RECOMMENDED WITHIN 1 FOOT OF THE PROBE INLET VALVE. THE RETURN PIPE SHOULD BE 1/4" TO 1/2" LARGER THAN THE INLET PIPE
- 2 UNIT HEIGHT VARIES PER FLANGE OPTIONS, +1", -4"
- 3 LIFTING WEIGHT: 150LBS. NOTE THAT THE EYELET IS NOT LOCATED DIRECTLY ABOVE CENTER OF GRAVITY
- 4 HEATED SAMPLE LINE RECOMMENDED @ 140°F MINIMUM FOR MOST APPLICATIONS.
- 5) SAMPLE FLOW RECOMMENDED 1-4 L/M
- 6 CUSTOMER I.D. TAG IF SPECIFIED ON PO. ENGRAVED STAINLESS SCREWS OR RIVETS.
- 7 THE RTD EXTENDS INTO THE MAIN COLUMN AND MUST BE REMOVED PRIOR TO REMOVING THE DISC ASSEMBLY. RTD TO BE INSTALLED UTILIZING A BORED-THRU COMPRESSION FITTING FOR EASE OF REMOVAL AND PROPER SEAL.
- 8 AMBIENT TEMPERATURE OPERATING RANGE: +14°F (-10°C) TO +130°F (+55°C)
- 9 SERIAL/PORT NUMBER LABEL INSIDE ON DOOR

LEFT SIDE VIEW

FRONT VIEW



|                                                                            |     |            |           |                      |         |    |
|----------------------------------------------------------------------------|-----|------------|-----------|----------------------|---------|----|
| 5200 Convoir Drive Carson City, NV 89706 PH(775)883-2500 FAX (775)883-6388 |     | 5          | 02/05/18/ | CHANGES PER REDLINES | RM      | BW |
|                                                                            |     | REV        | DATE      | DESCRIPTION          | DWN/REV |    |
| REVISIONS                                                                  |     |            |           |                      |         |    |
| DISTILLATION PROBE                                                         |     | DATE       | SCALE     | SIZE                 | SHEET   |    |
| LOCAL CONTROL, LIQUID COOLED                                               |     | 01/05/2017 | NTS       | D                    | 1 OF 4  |    |
| PART NO.                                                                   | FOR | DRAWN BY   | ECO#      | DRAWING NO.          |         |    |
| 1221-LC-L                                                                  | -   | C. SHIELDS | -         | P2783                |         |    |
|                                                                            |     | APVD BY    | B. WOLF   |                      |         |    |

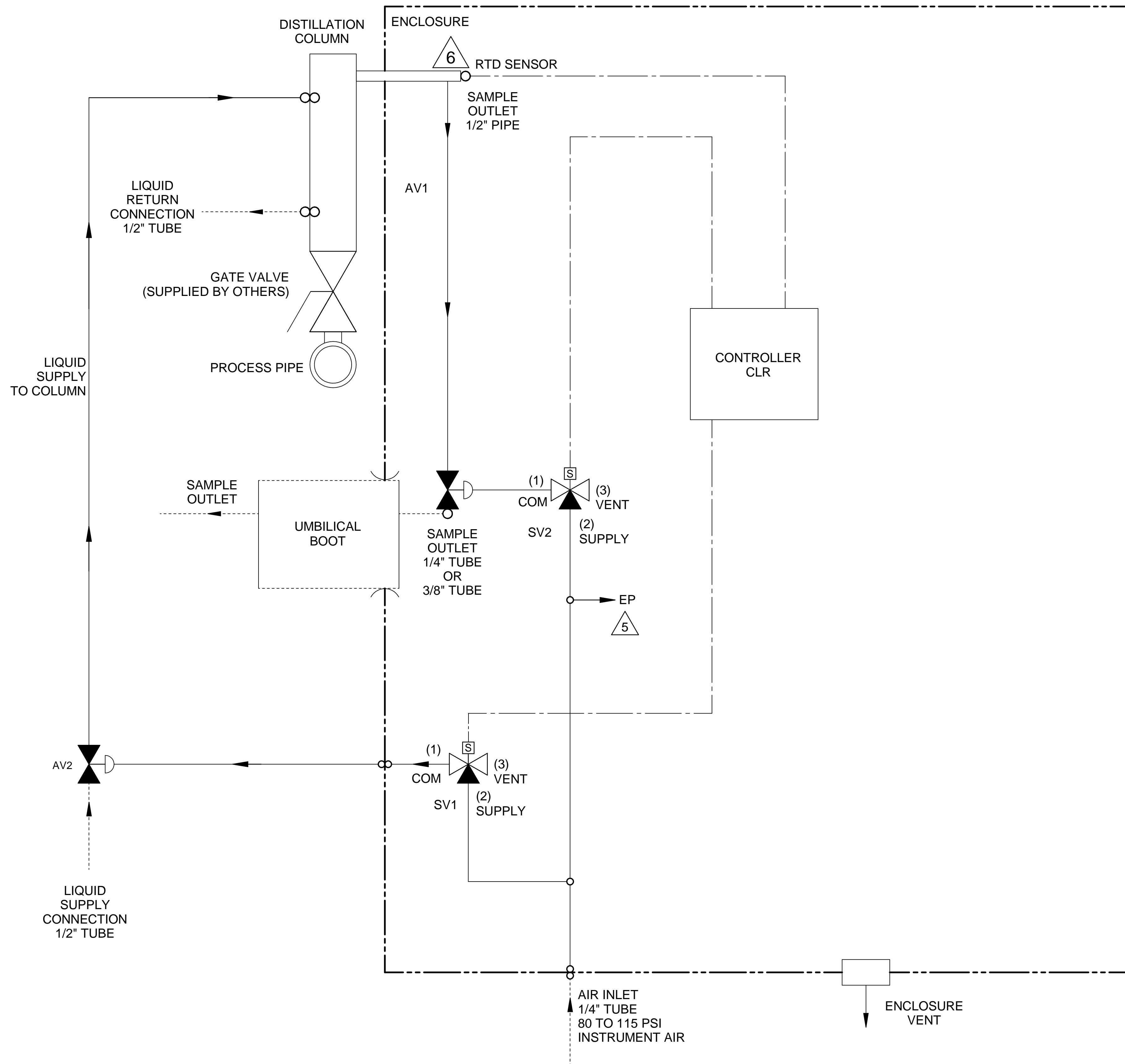



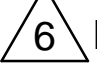
NOTES:

1 THE RTD EXTENDS INTO THE MAIN COLUMN AND MUST BE REMOVED PRIOR TO REMOVING THE DISC ASSEMBLY. RTD TO BE INSTALLED UTILIZING A BORED THRU COMPRESSION FITTING FOR EASE OF REMOVAL AND PROPER SEAL.

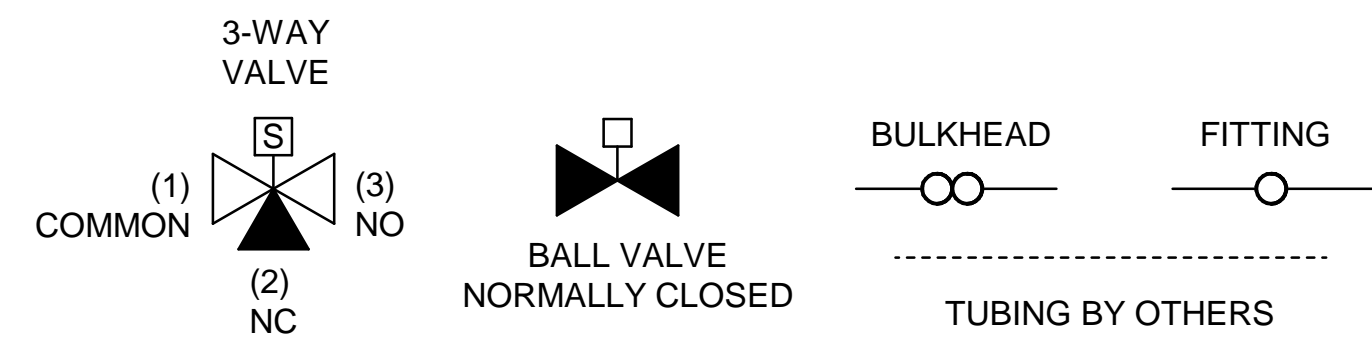
SAMPLE OUT USER CONNECTION  
1/4" TUBE  
(3/8" TUBE ADAPTER INCLUDED IN BOX)  
4954-1031-SW

|                                                                                                                                                                             |   |          |            |                      |             |    |
|-----------------------------------------------------------------------------------------------------------------------------------------------------------------------------|---|----------|------------|----------------------|-------------|----|
| 5200 Convair Drive Carson City, NV 89706 PH(775)883-2500 FAX (775)883-6388                                                                                                  |   | 5        | 02/05/18   | CHANGES PER REDLINES | RM          | BW |
|   |   | REV      | DATE       | DESCRIPTION          | DWN/APPVD   |    |
| REVISIONS                                                                                                                                                                   |   |          |            |                      |             |    |
| INTERIOR LAYOUT                                                                                                                                                             |   | DATE     | SCALE      | SIZE                 | SHEET       |    |
| PART NO.                                                                                                                                                                    |   | FOR      | NTS        | D                    | 2 OF 4      |    |
| 1221-LC-L                                                                                                                                                                   | - | DRAWN BY | C. SHIELDS | ECO#                 | DRAWING NO. |    |
|                                                                                                                                                                             |   | APVD BY  | B. WOLF    | -                    | P2783       |    |





- NOTES:
1. ALL TUBING TO BE 1/4" 316SS (UNLESS OTHERWISE NOTED)
  2. ALL WETTED MATERIALS ARE STAINLESS STEEL
  3. SAMPLE TEMPERATURE SETPOINT IN PLC IS 65°F UNLESS OTHERWISE STATED ON P.O.
  4. LIQUID SUPPLY TEMPERATURE IS RECOMMENDED 20°F LESS THAN PLC SETPOINT, MINIMUM
-  ENCLOSURE PURGE FITTING (<1 L/M)  
 BORED OUT FITTING 4954-1095-SW

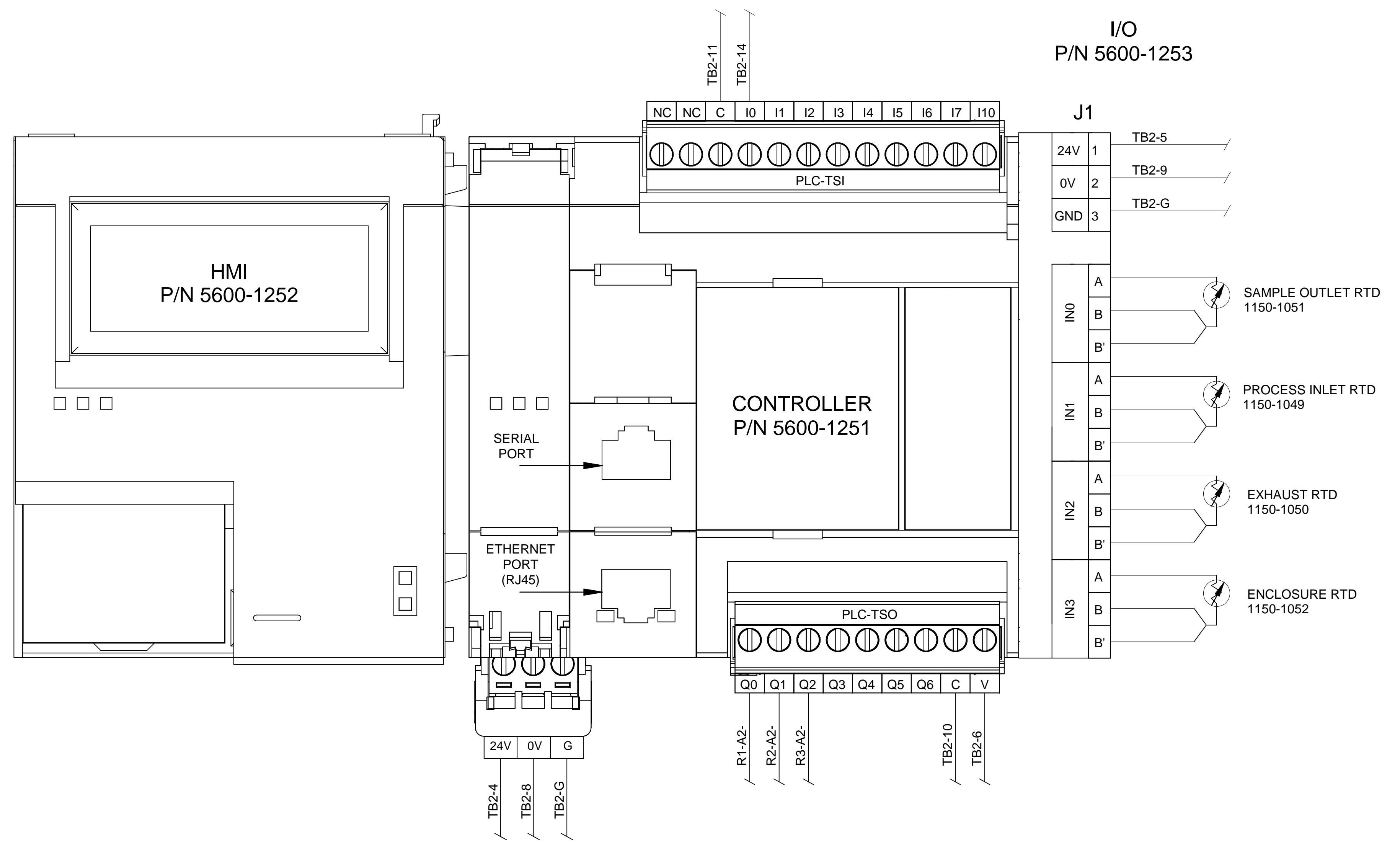
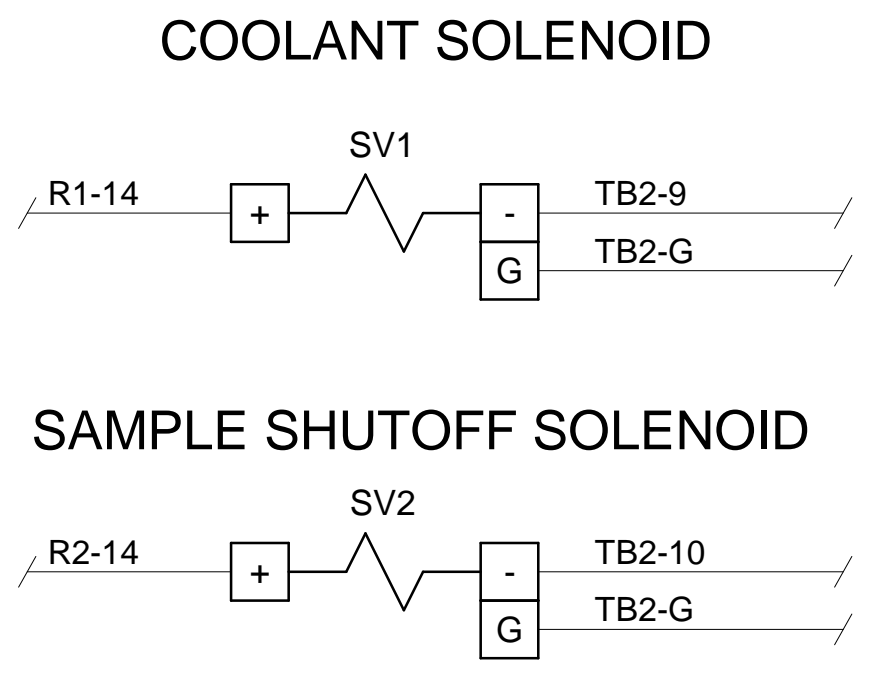
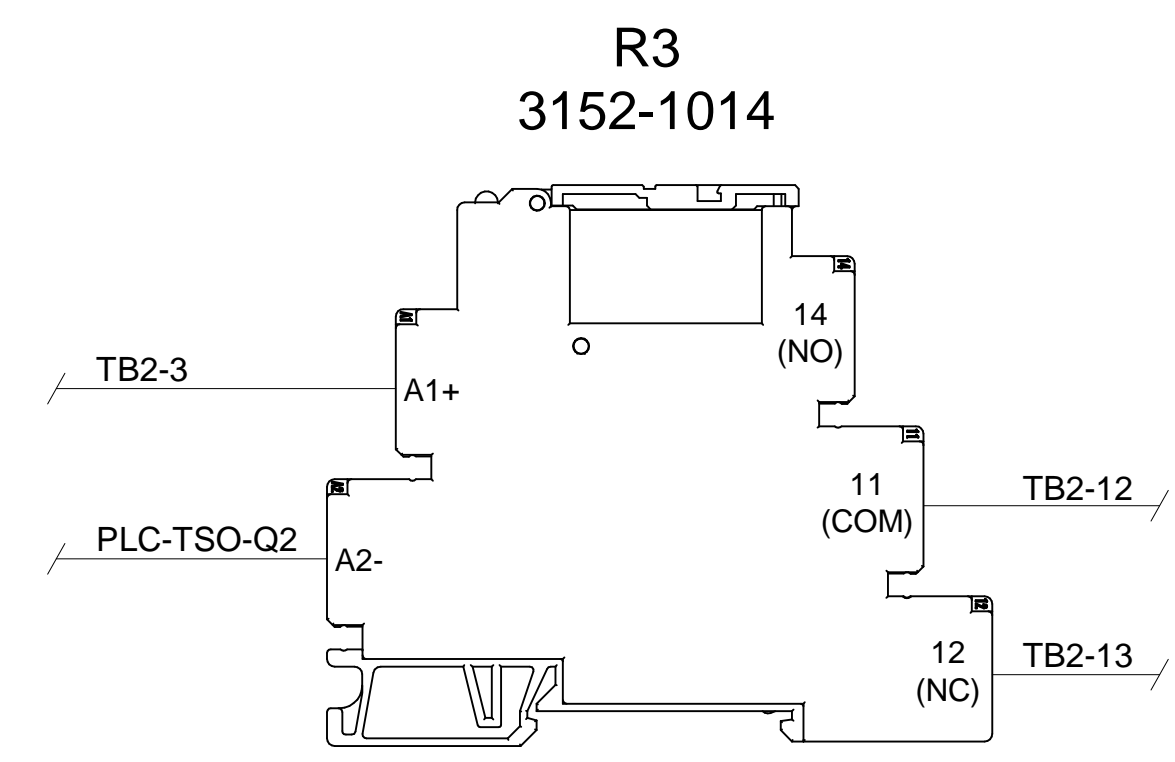
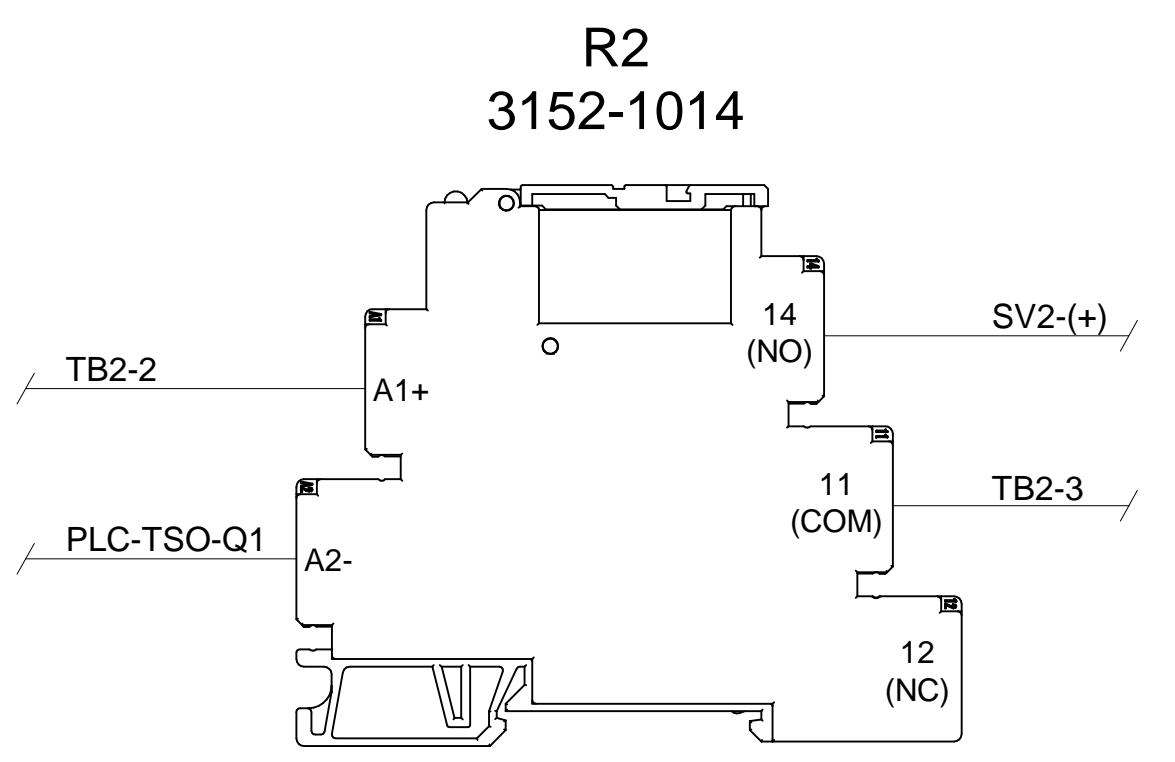
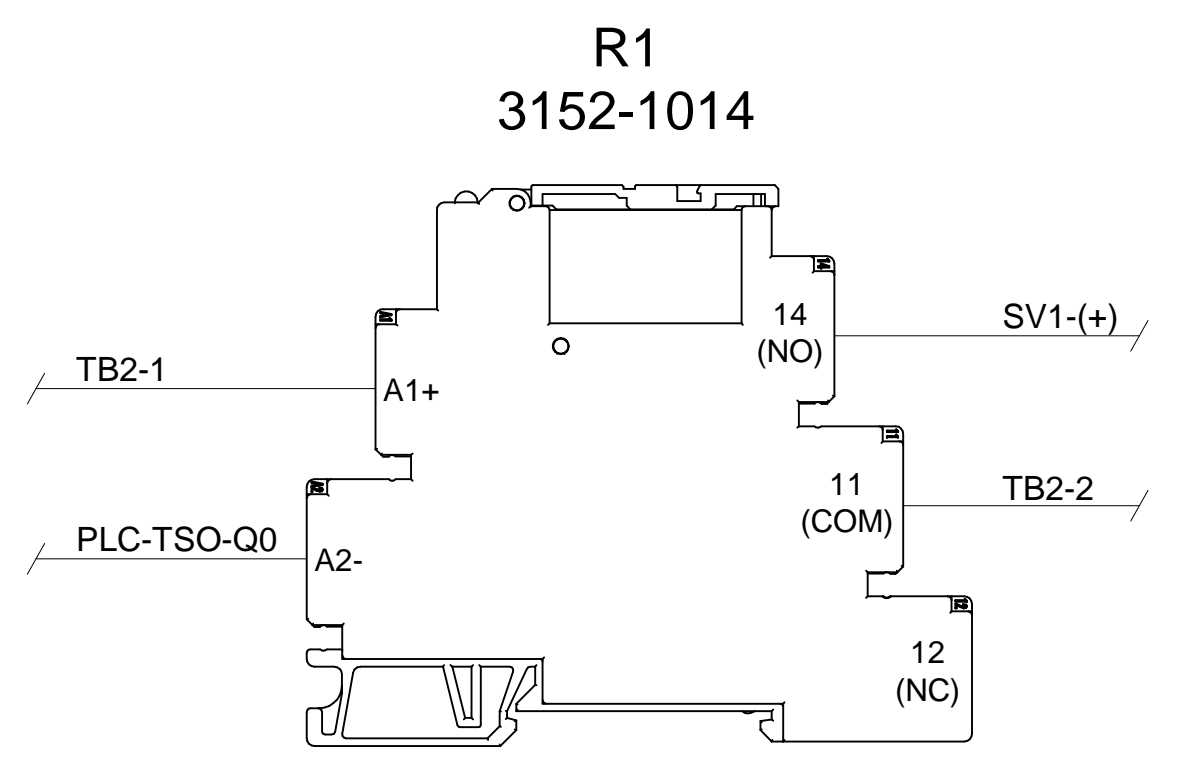
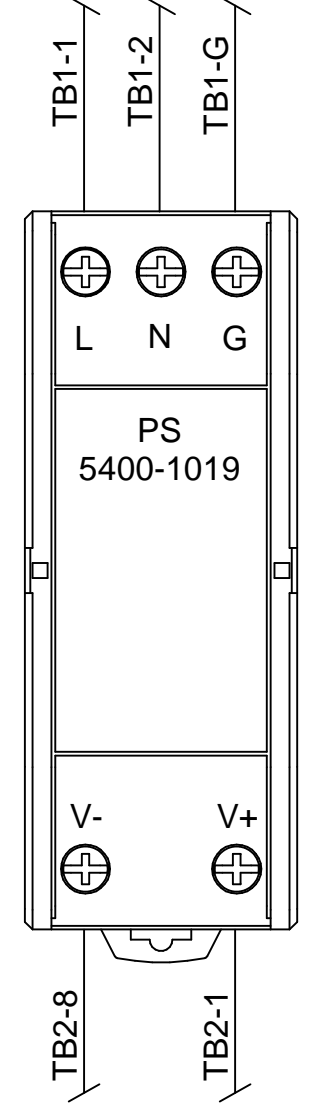
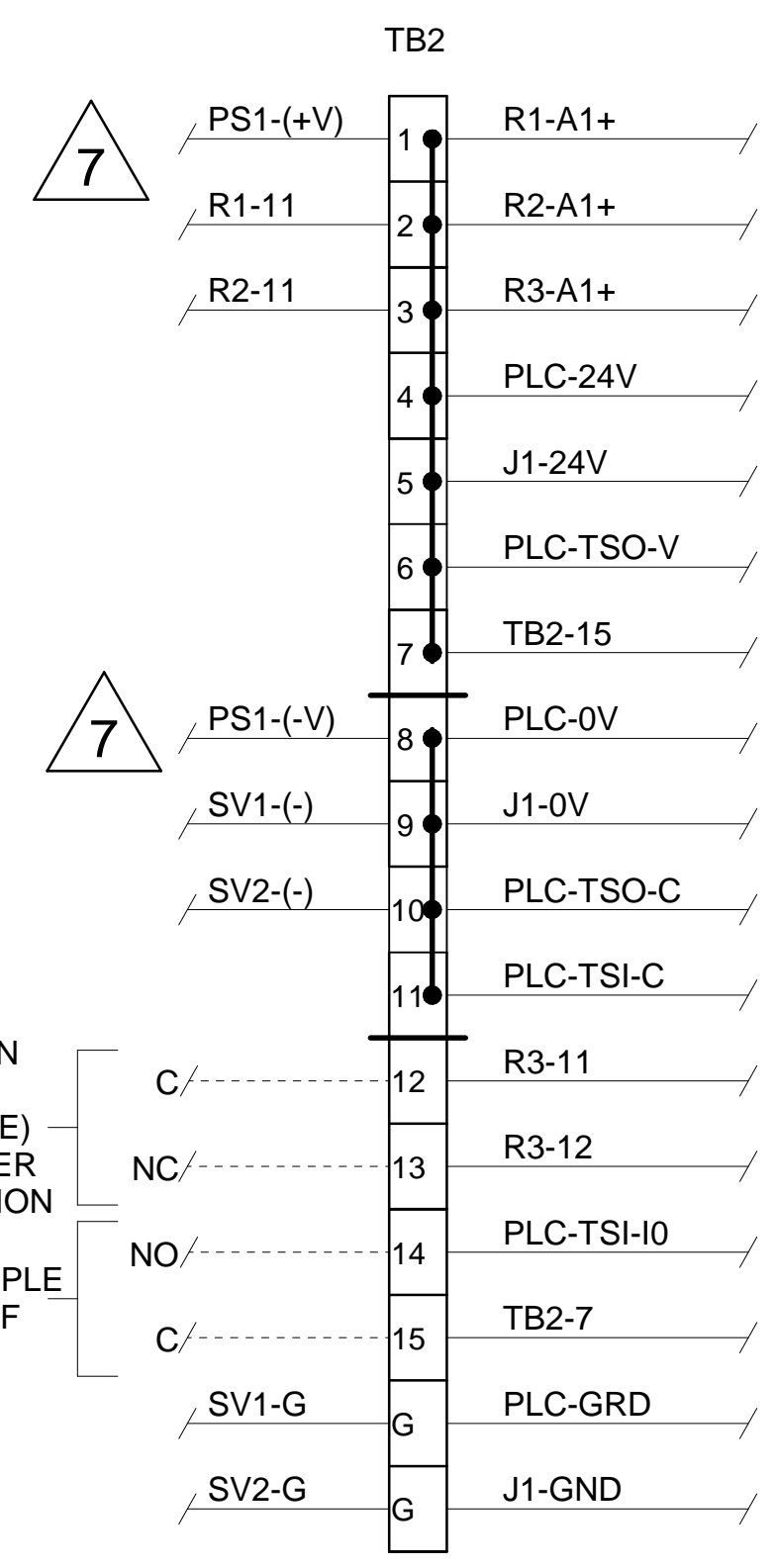
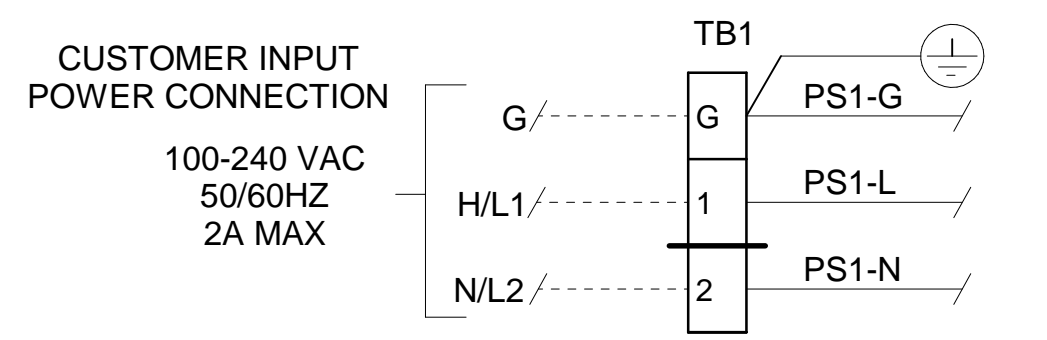
LEGEND



| ITEM  | QTY | DESCRIPTION                                | UAI PART NO. |
|-------|-----|--------------------------------------------|--------------|
| AV1   | 1   | AIR ACTUATED VALVE 1/4" N.C. SPRING RETURN | 4955-0109    |
| AV2   | 1   | AIR ACTUATED VALVE 1/2" N.C. SPRING RETURN | 4955-1147    |
| SV1,2 | 2   | SOLENOID VALVE 3-WAY 24VDC EXP. PROOF      | 4955-0260    |
| CLR   | 1   | CONTROLLER                                 | IDEC FC6A    |
| EP    | 1   | 1/4" TUBE W/ SNUBBER, 2µm                  | 4954-0177    |

|                                                                                                                                                                             |  |                     |          |                      |             |        |
|-----------------------------------------------------------------------------------------------------------------------------------------------------------------------------|--|---------------------|----------|----------------------|-------------|--------|
|   |  | 5                   | 02/05/18 | CHANGES PER REDLINES | RM          | BW     |
| P & ID                                                                                                                                                                      |  | DATE                |          | SCALE                | SIZE        | SHEET  |
| PART NO.                                                                                                                                                                    |  | 01/05/2017          |          | NTS                  | D           | 3 OF 4 |
| FOR                                                                                                                                                                         |  | DRAWN BY C. SHIELDS |          | ECO#                 | DRAWING NO. |        |
| 1221-LC-L                                                                                                                                                                   |  | APVD BY B. WOLF     |          | -                    | P2783       |        |





NOTES:

- ELECTRICAL CLASSIFICATION DESIGNED FOR CLASS 1, DIV2, GROUPS A, B, C, D. ALL ELECTRICAL COMPONENTS ARE SELF-CERTIFIED FOR HAZARDOUS AREA USAGE BY THE RESPECTIVE VENDOR. THIS ASSEMBLY HAS NOT BEEN CERTIFIED.
- WIRING SHALL BE IN ACCORDANCE WITH APPLICABLE NEC CODE. ELECTRICAL MATERIALS SHALL BE LABELED BY: UL, FM OR CSA (WIRE AND TERMINALS ONLY) THE FOLLOWING WIRE SIZES ARE EXCLUSIVE OF INTEGRATED COMPONENT WIRE SIZE: ALL WIRES: TFE 300V INSULATION, 18 AWG MINIMUM, STRANDED COPPER CONDUCTOR
- COLOR CODING:
 

|                |                 |                           |
|----------------|-----------------|---------------------------|
| <u>AC</u>      | <u>DC</u>       | <u>SIGNAL &amp; ALARM</u> |
| H/L1 - BLACK   | POSITIVE - RED  | ALL - YELLOW              |
| N/L2 - WHITE   | NEGATIVE - BLUE |                           |
| GROUND - GREEN |                 |                           |
- POWER SUPPLY AND RELAYS SHALL BE LOCATED ON TB DIN RAIL
- ENCLOSURE DOOR SHALL BE GROUNDED TO BACK PANEL
- TB1 & TB2 SHALL BE SEGREGATED.

**7** TO POWER WITH +24VDC, DISCONNECT PS1 AND WIRE DIRECTLY TO TB2-1 (+24V) AND TB2-8 (0V)

FIELD TO WIRE

|                                                                            |     |            |          |                      |          |    |
|----------------------------------------------------------------------------|-----|------------|----------|----------------------|----------|----|
| 5200 Convoir Drive Carson City, NV 89706 PH(775)883-2500 FAX (775)883-6388 |     | 5          | 02/05/18 | CHANGES PER REDLINES | RM       | BW |
|                                                                            |     | REV        | DATE     | DESCRIPTION          | DWN/APVD |    |
|                                                                            |     | REVISIONS  |          |                      |          |    |
| WIRING DIAGRAM                                                             |     | DATE       | SCALE    | SIZE                 | SHEET    |    |
|                                                                            |     | 01/05/2017 | NTS      | D                    | 4 OF 4   |    |
| PART NO.                                                                   | FOR | DRAWN BY   | ECO#     | DRAWING NO.          |          |    |
| 1221-LC-L                                                                  | -   | C. SHIELDS | -        | P2783                |          |    |
|                                                                            |     | APVD BY    |          |                      |          |    |
|                                                                            |     | B. WOLF    |          |                      |          |    |