

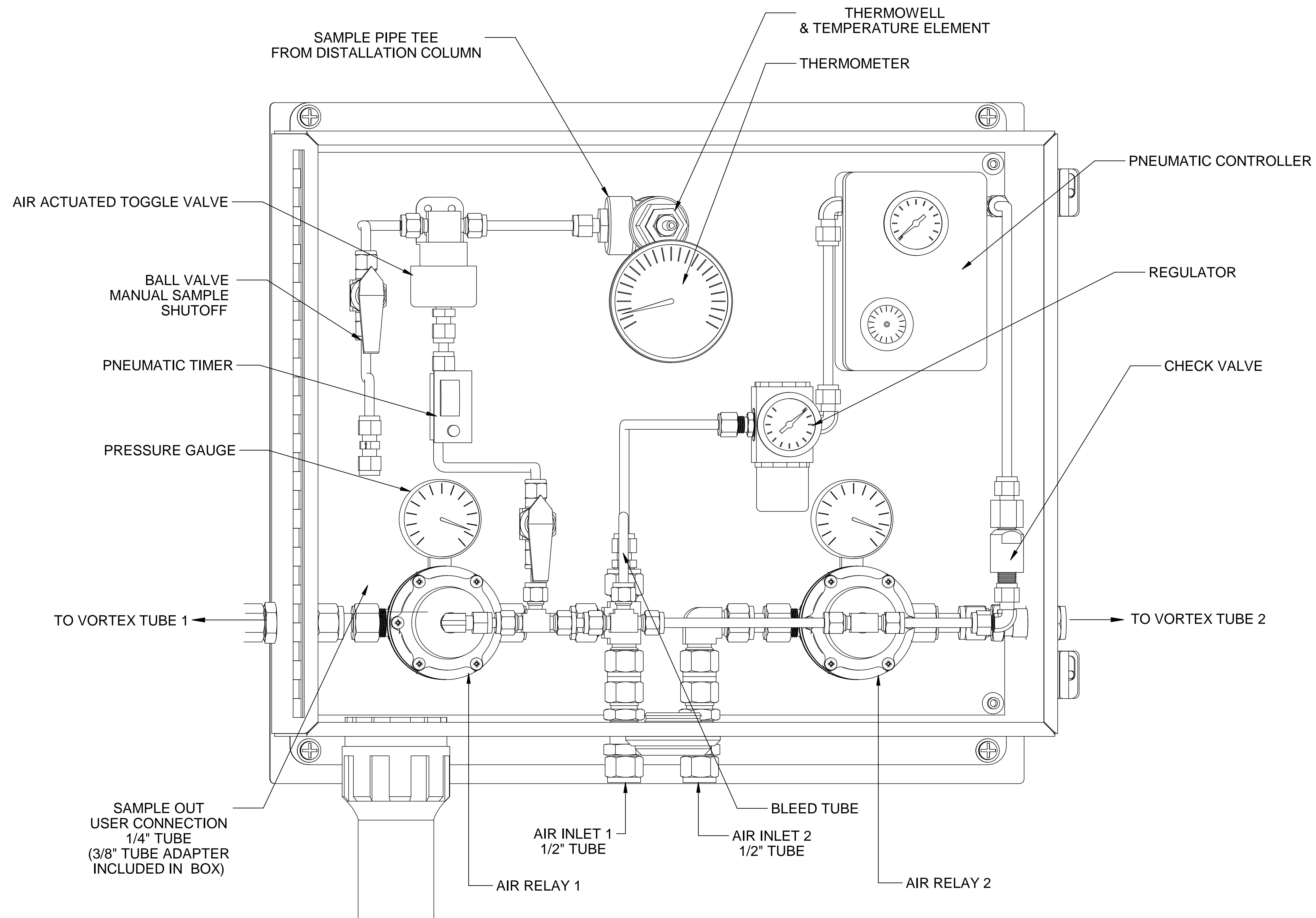




VERTEX COOLER & MUFFLER

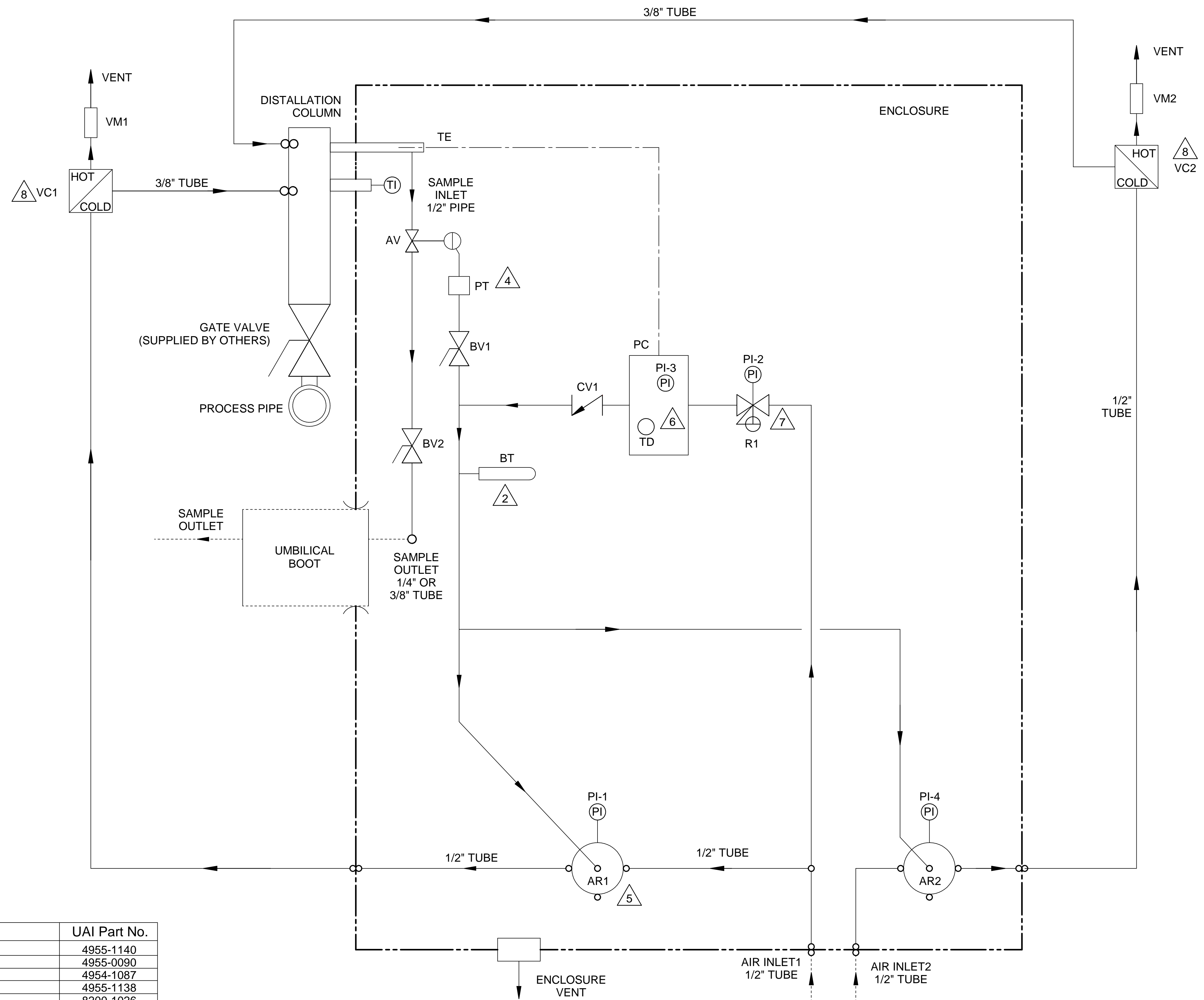
NOTES:

- 1 EACH VORTEX COOLER REQUIRES 35-40 SCFM @ 80-100PSIG. DEWPOINT \leq -40°F RECOMMENDED. TYPICAL CYCLE IS 20% ON. RECOMMEND TWO SEPARATE AIR SUPPLIES TO REDUCE THE CHANCE OF PRESSURE DROP BELOW RECOMMENDED LEVELS.
- 2 UNIT HEIGHT IS REDUCED TO 48" WITH 2.5" FLANGE OPTION.
- 3 LIFTING WEIGHT: 150LBS. NOTE THAT THE EYELET IS NOT LOCATED DIRECTLY ABOVE CENTER OF GRAVITY.
- 4 HEATED SAMPLE LINE RECOMMENDED @ 140°F MINIMUM.
- 5). SAMPLE FLOW RECOMMENDED 1-4 L/M.
- 6 CUSTOMER I.D. TAG IF SPECIFIED ON PO. GRAVOPOLY SECURED WITH SCREWS OR RIVETS. 1/2" TEXT HEIGHT, WHITE ON BLACK.

5200 Convair Drive Carson City, NV 89706 PH(775)883-2500 FAX (775)883-6388		1	04/21/17	Initial	TD	BW
 		REV	DATE	DESCRIPTION	DWN/REV	
		REVISIONS				
DISTILLATION PROBE EXTERIOR VIEW		DATE	SCALE	SIZE	SHEET	
PART NO. 1221-PA-V2		04/21/2017	NTS	D	1 OF 3	
FOR		DRAWN BY	ECO#	DRAWING NO.		
		D. Tulasi		P2782		
		APVD BY				
		B. Wolf				

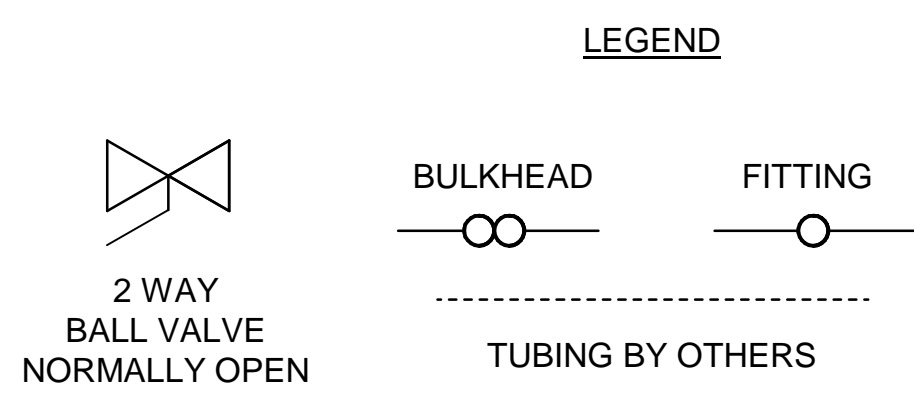


 		1	04/21/17	Initial	TD	BW
PNEUMATIC AUTOMATED CONTROLLER INTERIOR LAYOUT		REV DATE		DESCRIPTION	DWN/APVD	
PART NO.		FOR		DATE	SCALE	SIZE
1221-PA-V2		-		04/21/2017	NTS	D
DRAWN BY		ECO#		SHEET	DRAWING NO.	
APVD BY		-		2 OF 3	P2782	



- NOTES:
1. ALL TUBING TO BE 1/4" 316SS (UNLESS OTHERWISE NOTED).
 - 2 BLEED TUBE INSTALLED VERTICALLY WITH ORIFICE ON TOP.
 3. ALL WETTED MATERIALS ARE STAINLESS STEEL.
 - 4 SET PNEUMATIC TIMER TO 5 MINUTES.
 - 5 PLUG THE REMAINING OUTPUT ON AIR RELAY W/ PLUG P/N 4951-0023.
 - 6 SET TEMPERATURE DIAL TO 65°F. SET SENSITIVITY SLIDER APPROXIMATELY 1/8" FROM THE TOP.
 - 7 SET REGULATOR TO 40 PSI.
 - 8 SET VORTEX TUBE 3.5 TURNS FROM BOTTOM.

Item	Qty	Description	UAI Part No.
AV	1	Air Actuated Toggle Valve (NO)	4955-1140
BV1,2	2	Ball Valve, 2 Way, 1/4" Tube	4955-0090
BT	1	Bleed Tube 100 Micron	4954-1087
CV	1	Check Valve - 12psi	4955-1138
PT	1	Pneumatic Timer	8200-1026
AR1,2	2	Air Relay	4955-1139
PC	1	Pneumatic Controller With Integral Pressure Indicator Controller Output	4955-1137
PI-3	1	Integral Pressure Indicator Regulator Output	
TE	1	Temperature Element	
TD	1	Temperature Dial	
R1	1	Pressure Regulator With Integral Pressure Indicator Regulator Output	8200-1027
PI-2	1	Pressure Gauge, Relay Output	3019-1019
PI-1,4	2	Pressure Gauge, Relay Output	3019-1019
VC1,2	2	Vortex Cooler 40SCFM	4960-1013
VM1,2	2	Vortex Muffler - HOT	4960-1011
TI	1	Thermometer 12" Stem 316SS	3020-1003



5200 Convair Drive Carson City, NV 89706 PH(775)883-2500 FAX (775)883-6388		1	04/21/17	Initial	TD	BW
UNIVERSAL ANALYTICALS INC. AMETEK		REV	DATE	DESCRIPTION	DWN/APVD	
P&ID		REVISIONS		DATE	SCALE	SIZE
PART NO. 1221-PA-V2		FOR -		09/08/2015	NTS	D
DRAWN BY D. Tulasi		ECO#		SHEET 3 OF 3		DRAWING NO. P2782
APVD BY B. Wolf						