

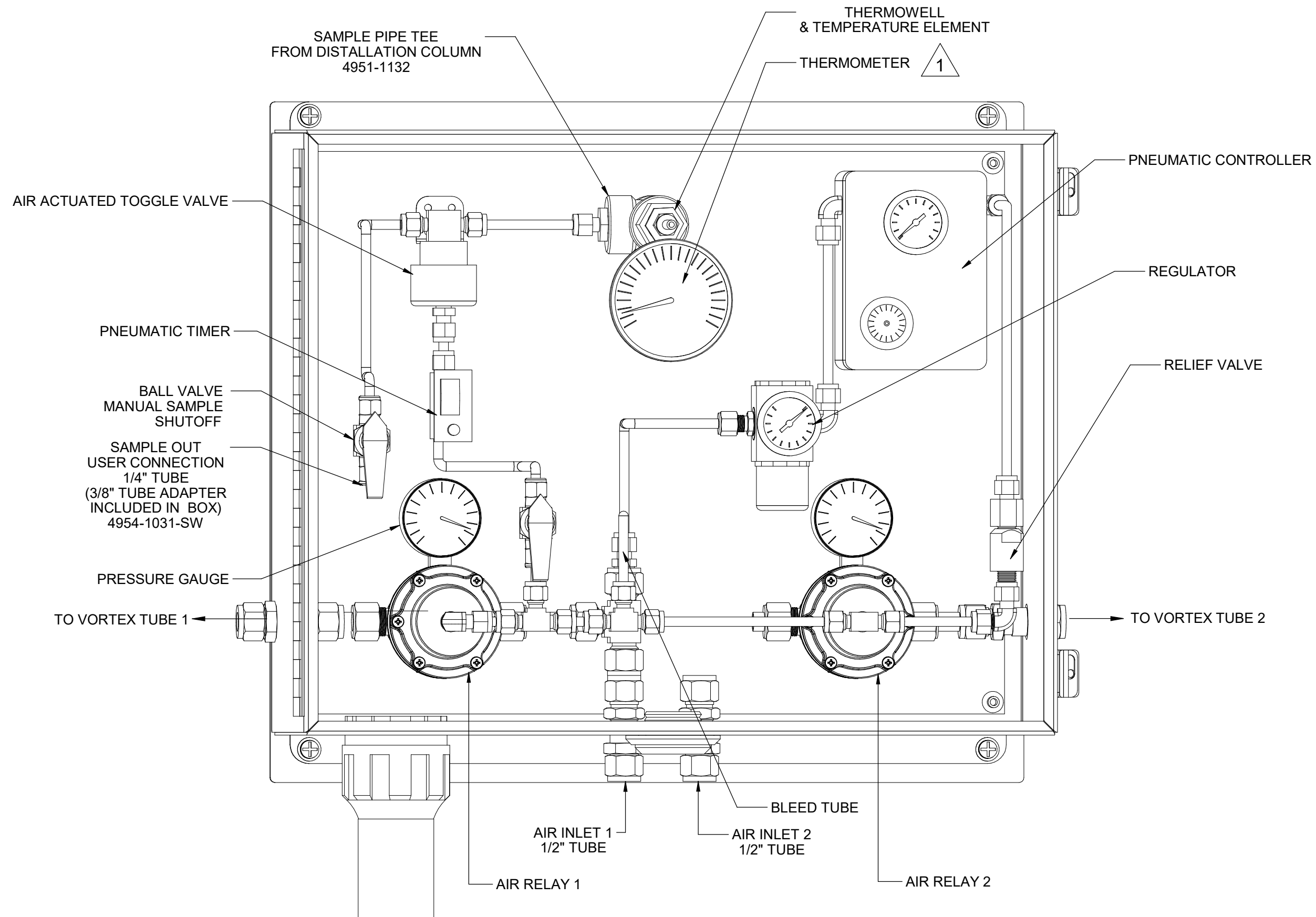


NOTES:



- 1 EACH VORTEX COOLER REQUIRES 35-40 SCFM @ 80-100PSIG. DEWPOINT $\leq -40^{\circ}\text{F}$ RECOMMENDED. TYPICAL CYCLE IS 20% ON. RECOMMEND TWO SEPARATE AIR SUPPLIES TO REDUCE THE CHANCE OF PRESSURE DROP BELOW RECOMMENDED LEVELS.
- 2 UNIT HEIGHT IS REDUCED TO 48" WITH 2.5" FLANGE OPTION.
- 3 LIFTING WEIGHT: 150LBS. NOTE THAT THE EYELET IS NOT LOCATED DIRECTLY ABOVE CENTER OF GRAVITY.
- 4 HEATED SAMPLE LINE RECOMMENDED @ 140°F MINIMUM.
- 5) SAMPLE FLOW RECOMMENDED 1-4 L/M.
- 6 CUSTOMER I.D. TAG IF SPECIFIED ON PO. ENGRAVED STAINLESS SECURED WITH SCREWS OR RIVETS.
- 7 SERIAL/PART NUMBER LABEL INSIDE ON DOOR.

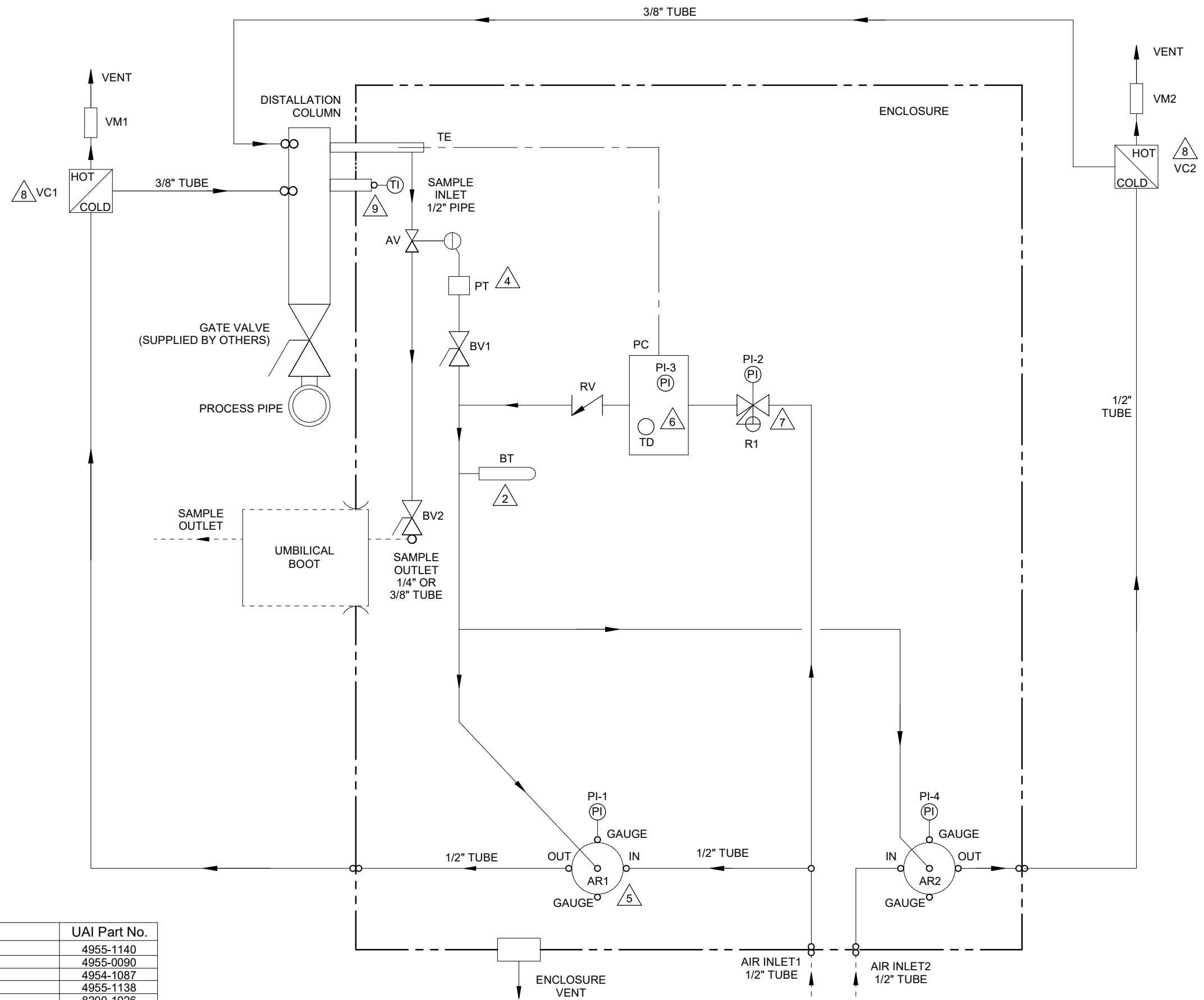
5200 Convair Drive Carson City, NV 89706 PH(775)883-2500 FAX (775)883-6388		4	03/15/18	UPDATE NOTES & FITTINGS	CS	BW
 		REV DATE	DESCRIPTION		DWN/REV	
REVISIONS						
DISTILLATION PROBE EXTERIOR VIEW		DATE	SCALE	SIZE	SHEET	
		04/21/2017	NTS	D	1 OF 3	
PART NO.	FOR	DRAWN BY	ECO#	DRAWING NO.		
1221-PA-V2	-	D. Tulasi	-	P2782		
		APVD BY				
		B. Wolf				



NOTES:

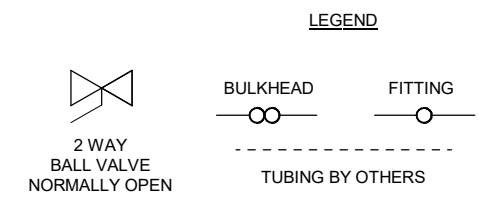
1 THE THERMOMETER EXTENDS INTO THE MAIN COLUMN AND MUST BE REMOVED PRIOR TO REMOVING THE DISC ASSEMBLY. THERMOMETER TO BE INSTALLED UTILIZING A BORED-THRU COMPRESSION FITTING FOR EASE OF REMOVAL AND PROPER SEAL.

5200 Convair Drive Carson City, NV 89706 PH(775)883-2500 FAX (775)883-6388		4	03/15/18	UPDATE NOTES & FITTINGS	CS	BW
 		REV	DATE	DESCRIPTION	DWN	APVD
REVISIONS						
PNEUMATIC AUTOMATED CONTROLLER INTERIOR LAYOUT		DATE	SCALE	SIZE	SHEET	
		04/21/2017	NTS	D	2 OF 3	
PART NO.	FOR	DRAWN BY	ECO#	DRAWING NO.		
1221-PA-V2	-	D. Tulasi	-	P2782		
		APVD BY				
		B. Wolf				



- NOTES:
1. ALL TUBING TO BE 1/4" 316SS (UNLESS OTHERWISE NOTED).
BLEED TUBE INSTALLED VERTICALLY WITH ORIFICE ON TOP.
 2. ALL WETTED MATERIALS ARE STAINLESS STEEL.
 3. SET PNEUMATIC TIMER TO 5 MINUTES.
 4. PLUG THE REMAINING OUTPUT ON AIR RELAY W/ PLUG P/N 4951-0023.
 5. SET TEMPERATURE DIAL TO 65°F. SET SENSITIVITY SLIDER APPROXIMATELY 1/8" FROM THE TOP.
 6. SET REGULATOR TO 40 PSI.
 7. SET VORTEX TUBE 3.5 TURNS FROM BOTTOM.
 8. BORED OUT FITTING 4954-0010-SW-BT

Item	Qty	Description	UAI Part No.
AV	1	Air Actuated Toggle Valve (NO)	4955-1140
BV1,2	2	Ball Valve, 2 Way, 1/4" Tube	4955-0090
BT	1	Bleed Tube 100 Micron	4954-1087
RV	1	Relief Valve - 12psi	4955-1138
PT	1	Pneumatic Timer	8200-1026
AR1,2	2	Air Relay	4955-1139
PC	1	Pneumatic Controller With Integral Pressure Indicator Controller Output	4955-1137
PI-3		Temperature Element	
TE		Temperature Dial	
TD			
R1	1	Pressure Regulator With Integral Pressure Indicator Regulator Output	8200-1027
PI-2	1	Pressure Gauge, Relay Output	3019-1019
PI-1,4	2	Pressure Gauge, Relay Output	3019-1019
VC1,2	2	Vortex Cooler 40SCFM	4960-1013
VM1,2	2	Vortex Muffler - HOT	4960-1011
TI	1	Thermometer 12" Stem 316SS	3020-1003



5200 Convair Drive Carson City, NV 89706 PH(775)883-2500 FAX (775)883-6388		4	03/15/18	UPDATE NOTES & FITTINGS	CS	BW
UNIVERSAL ANALYTICALS INC. AMETEK		REV	DATE	DESCRIPTION	DWN	APVD
REVISIONS						
P&ID		DATE	SCALE	SIZE	SHEET	
		09/08/2015	NTS	D	3 OF 3	
PART NO.	FOR	DRAWN BY	ECO#	DRAWING NO.		
1221-PA-V2	-	D. Tulasi	-	P2782		
		APVD BY				
		B. Wolf				