

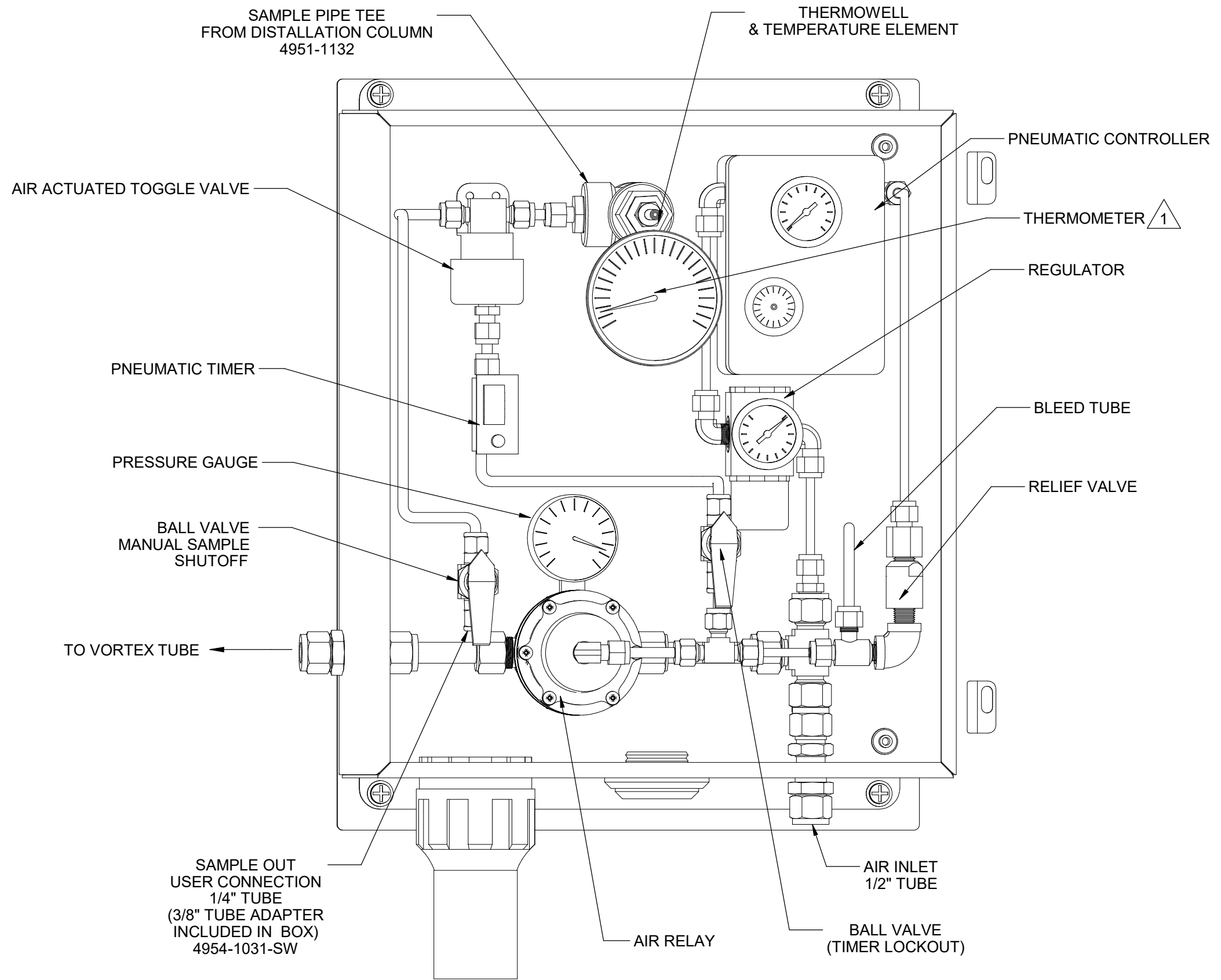


NOTES:



- 1 VORTEX COOLER REQUIRES 35-40 SCFM @ 80-100PSIG. DEWPOINT \leq -40°F RECOMMENDED. TYPICAL CYCLE IS 20% ON.
- 2 UNIT HEIGHT PER FLANGE OPTIONS, +1", -4"
- 3 LIFTING WEIGHT: 150LBS. NOTE THAT THE EYELET IS NOT LOCATED DIRECTLY ABOVE CENTER OF GRAVITY.
- 4 HEATED SAMPLE LINE RECOMMENDED @ 140°F MINIMUM.
- 5. SAMPLE FLOW RECOMMENDED 1-4 L/M.
- 6 CUSTOMER I.D. TAG IF SPECIFIED ON PO. ENGRAVED STAINLESS SECURED WITH SCREWS OR RIVETS.
- 7 SERIAL/PART NUMBER LABEL LOCATED INSIDE ON DOOR.

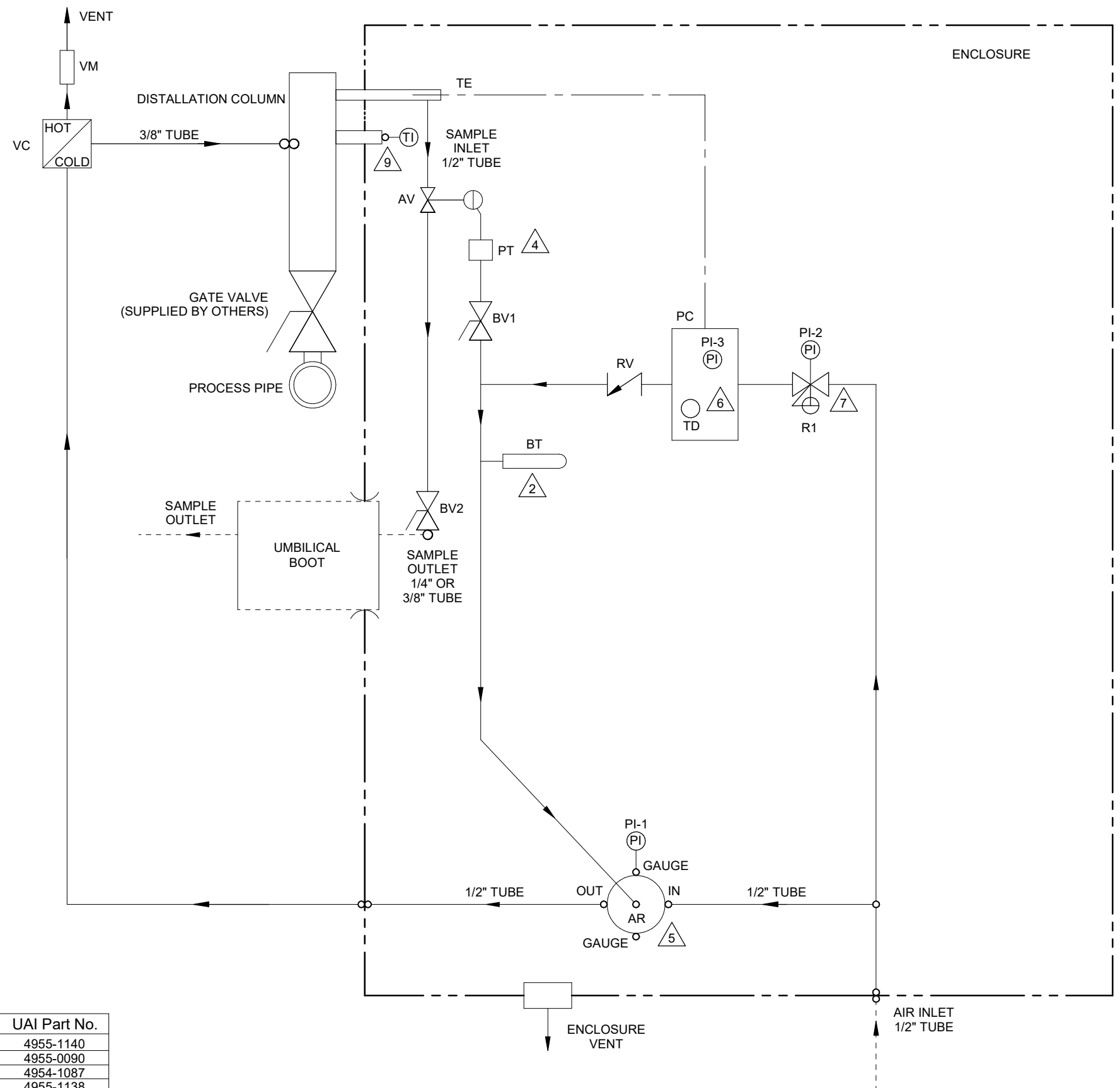
5200 Convair Drive Carson City, NV 89706 PH(775)883-2500 FAX (775)883-6388		5	03/15/18	UPDATE NOTES & FITTINGS	CS	BW
 		REV	DATE	DESCRIPTION	DWN/APVD	
REVISIONS						
DISTILLATION PROBE EXTERIOR VIEW		DATE	SCALE	SIZE	SHEET	
		09/08/2015	NTS	D	1 OF 3	
PART NO.	FOR	DRAWN BY	M. Walser	ECO#	DRAWING NO.	
1221-PA-V	-	APVD BY	B. Wolf	-	P2781	



NOTES:

1 THE THERMOMETER EXTENDS INTO THE MAIN COLUMN AND MUST BE REMOVED PRIOR TO REMOVING THE DISC ASSEMBLY. THERMOMETER TO BE INSTALLED UTILIZING A BORED-THRU COMPRESSION FITTING FOR EASE OF REMOVAL AND PROPER SEAL.

5200 Convair Drive Carson City, NV 89706 PH(775)883-2500 FAX (775)883-6388		5	03/15/18	UPDATE NOTES & FITTINGS	CS	BW
 		REV DATE		DESCRIPTION	DWN/APPVD	
REVISIONS						
PNEUMATIC AUTOMATED CONTROLLER INTERIOR LAYOUT		DATE	SCALE	SIZE	SHEET	
		09/08/2015	NTS	D	2 OF 3	
PART NO.	FOR	DRAWN BY		ECO#	DRAWING NO.	
1221-PA-V	-	M. Walser		-	P2781	
		APVD BY				
		B. Wolf				



NOTES:

1. ALL TUBING TO BE 1/4" 316SS (UNLESS OTHERWISE NOTED).

BLEED TUBE INSTALLED VERTICALLY WITH ORIFICE ON TOP.

2. ALL WETTED MATERIALS ARE STAINLESS STEEL.

4. SET PNEUMATIC TIMER TO 5 MINUTES.

5. PLUG THE REMAINING OUTPUT ON AIR RELAY W/ PLUG P/N 4951-0023.

6. SET TEMPERATURE DIAL TO 65°F. SET SENSITIVITY SLIDER APPROXIMATELY 1/8" FROM THE TOP.

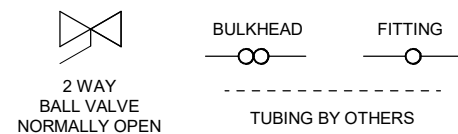
7. SET REGULATOR TO 40 PSI.

8. SET VORTEX TUBE 3.5 TURNS FROM BOTTOM.

9. BORED OUT FITTING 4954-0010-SW-BT

Item	Qty	Description	UAI Part No.
AV	1	Air Actuated Toggle Valve (NO)	4955-1140
BV1,2	2	Ball Valve, 2 Way, 1/4" Tube	4955-0090
BT	1	Bleed Tube 100 Micron	4954-1087
RV	1	Relief Valve - 12psi	4955-1138
PT	1	Pneumatic Timer	8200-1026
AR	1	Air Relay	4955-1139
PC	1	Pneumatic Controller With Integral Pressure Indicator Controller Output	4955-1137
PI-3		Temperature Element	
TE		Temperature Dial	
TD			
R1	1	Pressure Regulator With Integral Pressure Indicator Regulator Output	8200-1027
PI-2	1	Pressure Gauge, Relay Output	3019-1019
PI-1	1	Pressure Gauge, Relay Output	3019-1019
VC	1	Vortex Cooler 40SCFM	4960-1013
VM	1	Vortex Muffler - HOT	4960-1011
TI	1	Thermometer 12" Stem 316SS	3020-1003

LEGEND



5200 Convair Drive Carson City, NV 89706 PH(775)883-2500 FAX (775)883-6388		5	03/15/18	UPDATE NOTES & FITTINGS	CS	BW
UNIVERSAL Analyzers Inc.		REV DATE		DESCRIPTION	DWN/AVD	
AMETEK		DATE		SCALE	SIZE	SHEET
P&ID		09/08/2015		NTS	D	3 OF 3
PART NO.	FOR	DRAWN BY	ECO#	DRAWING NO.		
1221-PA-V	-	M. Walser	-	P2781		
		APVD BY				
		B. Wolf				