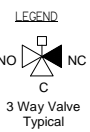
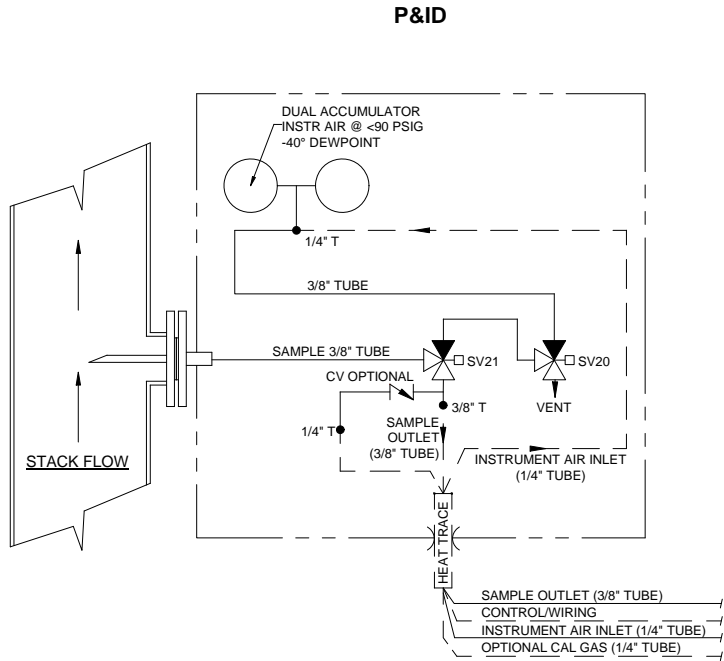
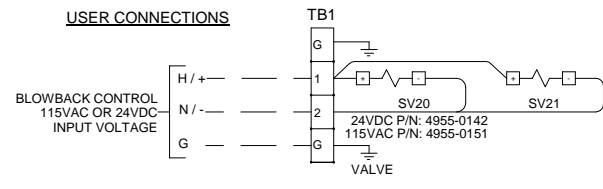


<b>UNIVERSAL ANALYZERS INC.</b> 5200 Conrail Drive Carson City, Nevada 89706 USA		E 12/11/09	Show 230VAC Option	WC	GE
MODEL 271 FILTER PROBE ARRANGEMENT		REVISIONS			
PART NO. NOT ISSUED		DATE 06/06/2007	SCALE N.T.S.	SIZE D	SHEET 1 OF 4
FOR INSTRUMENT		DRAWN BY E. Musselman APVD BY G. Evans	DRAWING NO. P1186		

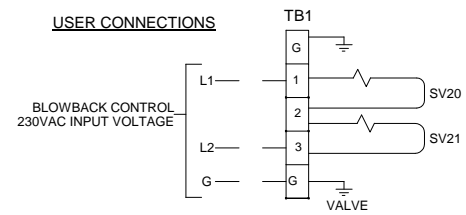


Item	Qty	Description	UAI Part No.
SV20,21	2	Solenoid Valve 3-Way SS 150P.S.I. 24VDC	4955-0142
SV20,21	2	Solenoid Valve 3-Way SS 150P.S.I 115VAC	4955-0151
CV	1	Check Valve (Optional)	4955-0148

### WIRING SCHEMATIC (NON-HEATED ENCLOSURE) 115VAC or 24VDC



### WIRING SCHEMATIC (NON-HEATED ENCLOSURE) 230VAC



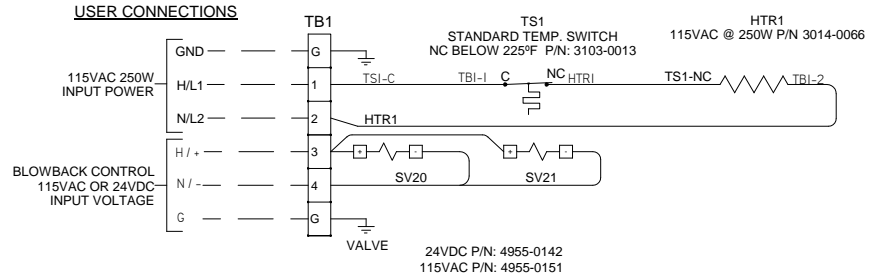
#### CONDUIT AND WIRING NOTES

- Electrical Classification : Inside - General Purpose  
System is configured at the factory for required voltage. Contact factory for voltage change requirements.
- AC Wiring shall be individual conductors of stranded tinned copper with 300V, Type TFE Insulation. Minimum wire size shall be 18 AWG unless otherwise specified. Color Code Shall be as follows: Hot - Black L1 - Brown  
Neutral - White L2 - Blue  
Ground - Green G - Green  
115VAC 230VAC
- DC Wiring shall be individual conductors of stranded tinned copper with 300V, Type TFE insulation. Minimum wire size shall be 22 AWG unless otherwise specified.

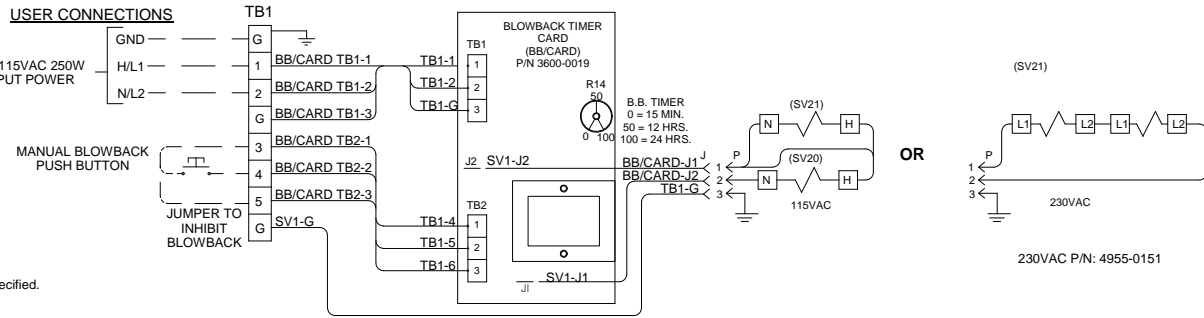
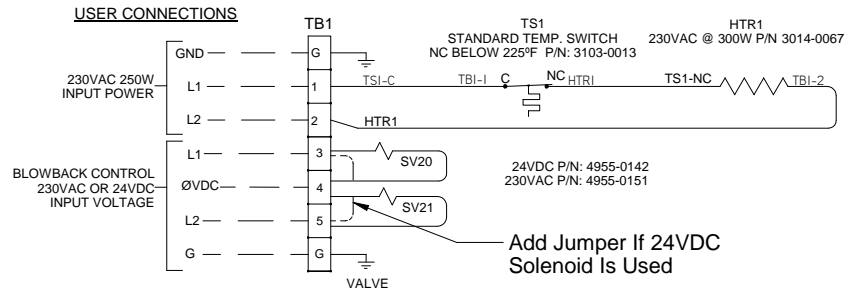
FIELD TO WIRE

<b>UNIVERSAL ANALYZERS INC.</b> 3200 Cornair Drive Carson City, Nevada 89706 USA		E 12/11/09	Show 230VAC Option	WC	GE
MODEL 271 P&ID AND WIRING SCHEMATIC		REVISIONS			
PART NO. NOT ISSUED	FOR INSTRUMENT	DATE 06/06/2007	SCALE NTS	SIZE D	SHEET 2 OF 4
		DRAWN BY APVD BY E. Musselman G. Evans	DRAWING NO. P1186		

### WIRING SCHEMATIC (HEATED ENCLOSURE) 115VAC



### WIRING SCHEMATIC 230VAC (HEATED ENCLOSURE)



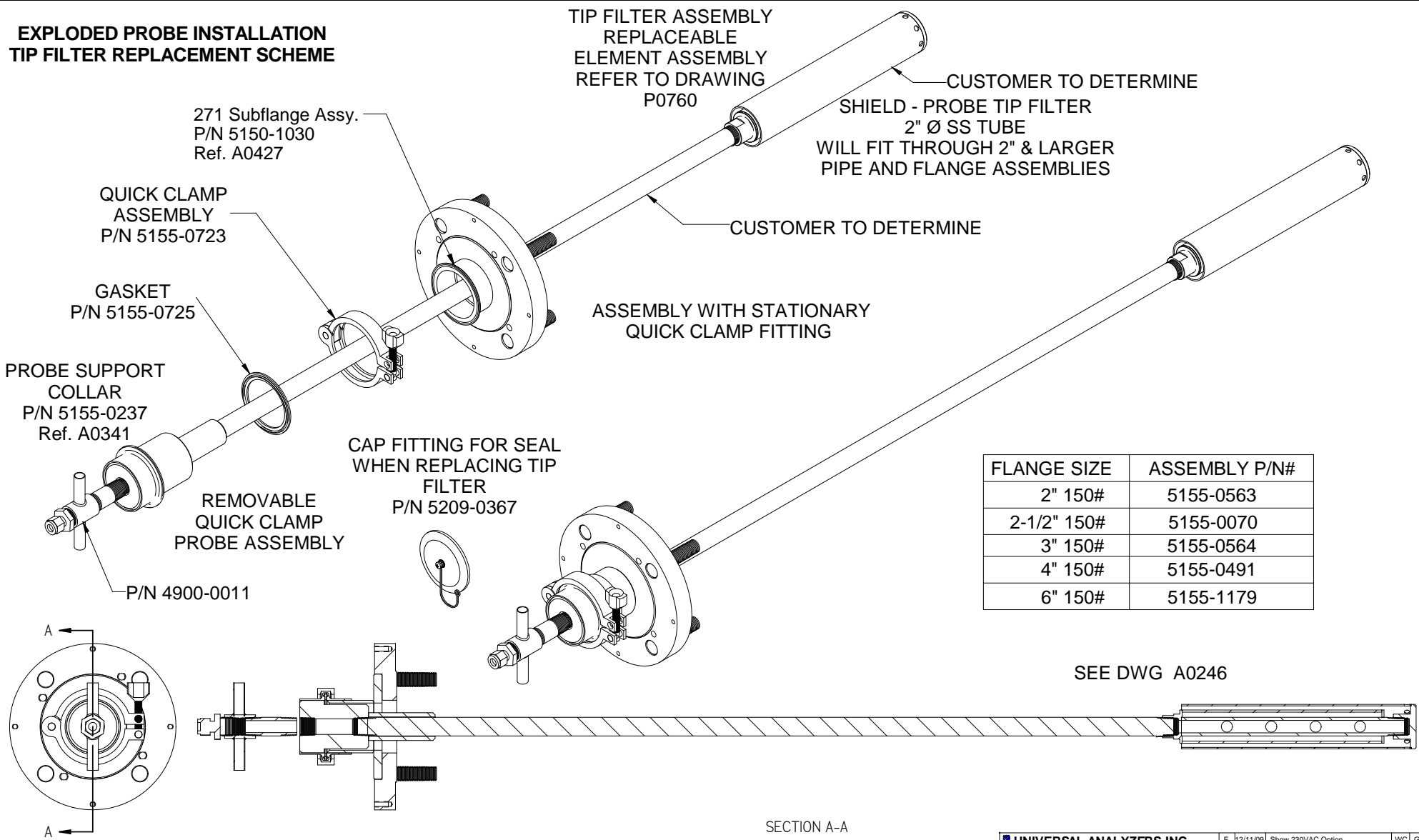
#### CONDUIT AND WIRING NOTES

- Electrical Classification : Inside - General Purpose  
System is configured at the factory for required voltage. Contact factory for voltage change requirements.
- AC Wiring shall be individual conductors of stranded tinned copper with 300V, Type TFE Insulation. Minimum wire size shall be 18 AWG unless otherwise specified.  
Color Code Shall be as follows: Hot - Black L1 - Brown  
Neutral - White L2 - Blue  
Ground - Green G - Green  
115VAC 230VAC
- DC Wiring shall be individual conductors of stranded tinned copper with 300V, Type TFE insulation. Minimum wire size shall be 22 AWG unless otherwise specified.

FIELD TO WIRE

<b>UNIVERSAL ANALYZERS INC.</b> <small>3200 Comair Drive Carson City, Nevada 89706 USA</small>		E 12/11/09	Show 230VAC Option	WC	GE
		REV DATE	DESCRIPTION	DWN	APVD
<b>MODEL 271</b> <b>P&amp;ID AND WIRING SCHEMATIC</b>		REVISIONS			
		DATE	SCALE	SIZE	SHEET
PART NO. NOT ISSUED	FOR INSTRUMENT	06/06/2007	NTS	D	3 OF 4
DRAWN BY G. Evans		APVD BY E. Musselman		DRAWING NO. P1186	

**EXPLODED PROBE INSTALLATION  
TIP FILTER REPLACEMENT SCHEME**



FLANGE SIZE	ASSEMBLY P/N#
2" 150#	5155-0563
2-1/2" 150#	5155-0070
3" 150#	5155-0564
4" 150#	5155-0491
6" 150#	5155-1179

SEE DWG A0246

SECTION A-A

<b>UNIVERSAL ANALYZERS INC.</b> 3209 Conrail Drive Carson City, Nevada 89706 USA		E 12/11/09	Show 230VAC Option	WC	GE
MODEL 271 PROBE FILTER ASSEMBLY		REV	DATE	DESCRIPTION	
PART NO. NOT ISSUED		FOR INSTRUMENT		REVISIONS	
DATE 06/06/2007		SCALE NTS	SIZE D	SHEET 4 OF 4	
DRAWN BY E. Musselman		APVD BY G. Evans		DRAWING NO. P1186	