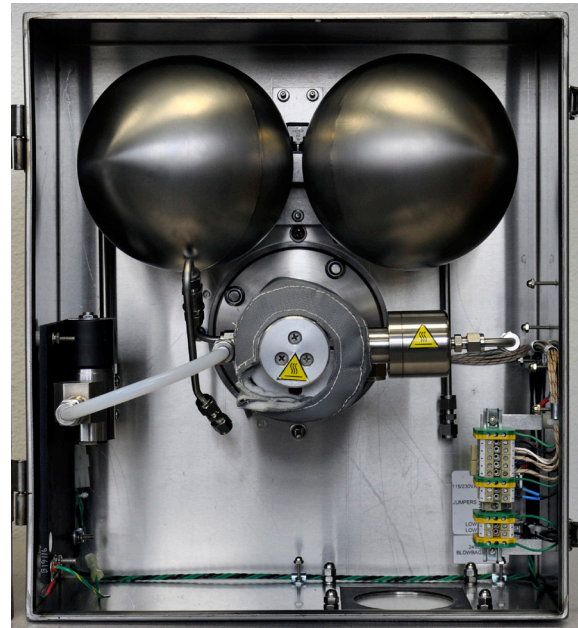


The Universal Analyzers Model 275E heated sample probe is designed for continuous use in extractive gas sampling systems. The modular design is used to filter dust and particulate from high dust loaded, high temperature, and high dew point corrosive gas streams. The sample probe is designed with the end user in mind and comes with a no-tools design for filter replacement.

A stainless steel weatherproof cover is included along with integrated temperature control at 340°F. To avoid cold spots, high wattage heating and an insulation wrap is included to keep the filter element and the tube connections hot and above the dew point. A 9" length woven stainless steel filter (2µm) element comes standard.

For successful, continuous operation in high dust loading environments, it is important to install proper filtration and an efficient blow-back for periodic cleaning of the filter chamber, probe tube and optional probe tip filter. The type 275E extractive gas sampling probe comes with a connection for blow back/purging and an air operated isolation valve. The isolation valve prevents over pressurizing the down stream components and assures that the total volume of blow back air entering the filter chamber is directed out the tube for efficient cleaning. To assure that the blow-back is effective, two high pressure accumulator tanks with air release valve are available.

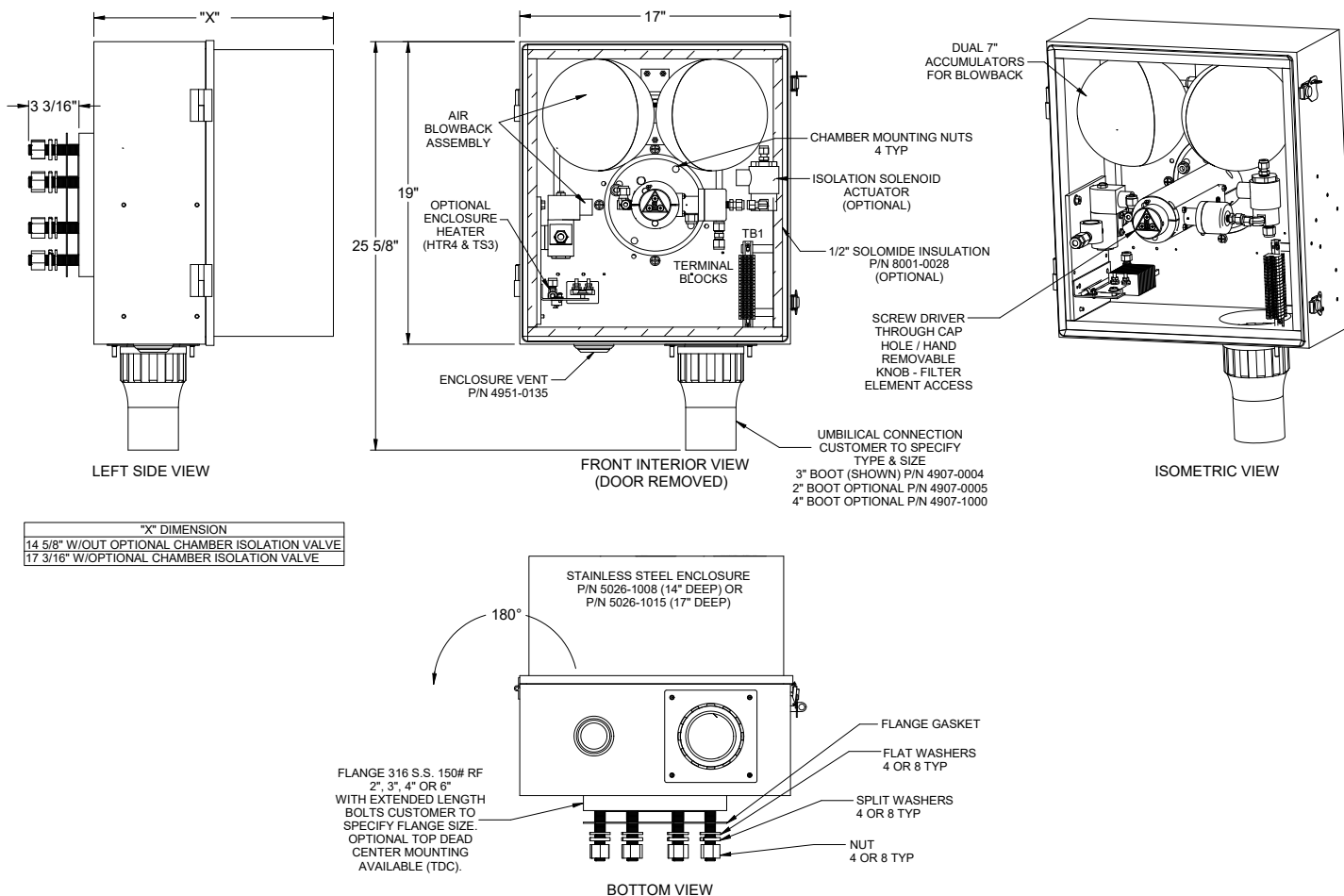


APPLICATIONS:

- Cement Plants
- Refineries
- Incineration OPS
- Trash to Energy Plants
- Other High Dust Applications

FEATURES:

- Easy maintenance and filter element replacement
- Blow Back with dual accumulator tanks
- Hazardous area options
- Sub flange for easy removal of probe tube/filter assembly
- Self regulating temperature control
- Prevents excessive use of cal gas
- Ammonia Oxidizer optional Pneumatic isolation valve
- Corrosion resistant wetted parts
- Rugged construction
- Stainless steel weather resistant enclosure



Technical Information:

Filter Element:	2µm Woven Stainless Steel – 9" length
Sample flow rate:	0-20 l/m
Operating Temperature:	340°F (optional 525°F)
Process Wetted Material:	316 Stainless Steel, PTFE, Viton, Ceramic
Sample Out Connection:	3/8" tube
Cal Gas Connection:	1/4" tube
Blow Back Connection:	1/4" tube (suggested air pressure 80-100psig)
Isolation Valve Connection:	1/4" tube (required control pressure 40 psig min; 120 psig max)
Heater:	Rod heaters, 500 watts
Temperature Control:	Self-Regulating with thermo-switch & SSR (<i>Remote control T/C or RTD Available</i>)
Area Classification:	General Purpose
Power Supply:	115/230 50/60Hz VAC
Enclosure/Dimensions:	SS ; 19 h x 17 w x 15 d
Weight:	~65 LB (29 KG)
Mounting Flange:	ANSI 2", 3", 4" or 6"
Sample Line Connection:	3" Heat Shrink Boot (Standard) 4" Heat Shrink Boot (Optional) 2" Heat Shrink Boot (Optional)
Probe Tube Options:	SS, Hastelloy, Mullite, Inconel or others on request