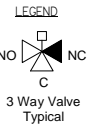
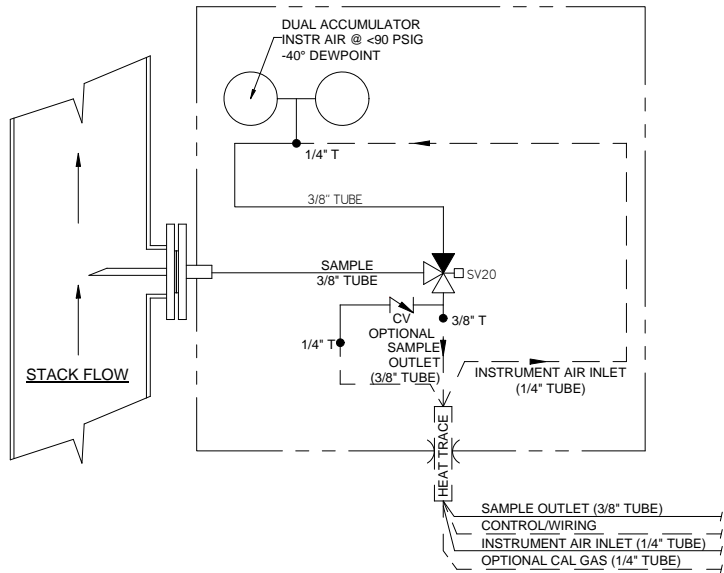


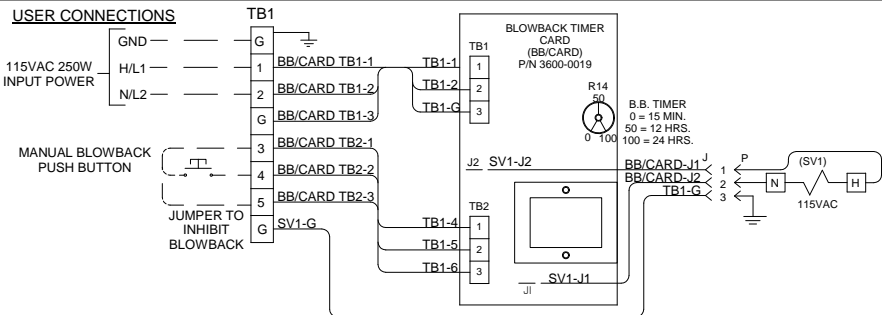
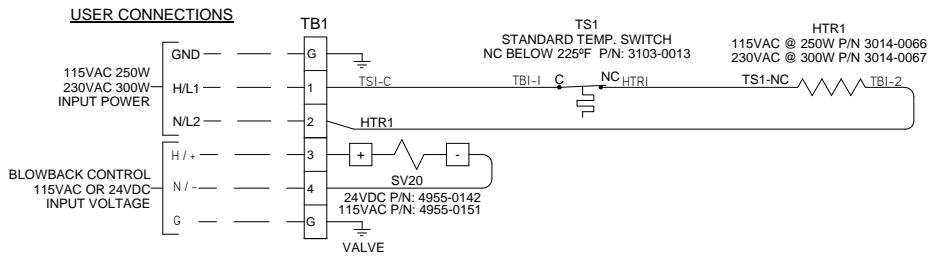
<b>UNIVERSAL ANALYZERS INC.</b> 1701 South Sairo Terrace Carson City, Nevada 89706 USA		A	11/13/07	REVISE QUICK CLAMP	EM	GE
MODEL 271 FILTER PROBE ARRANGEMENT		REV	DATE	DESCRIPTION	DWN/APVD	
PART NO. NOT ISSUED		DATE 06/06/2007		REVISIONS	SCALE NTS	SHEET 1 OF 3
FOR INSTRUMENT		DRAWN BY APVD BY	E. Musselman G. Evans	SIZE D	DRAWING NO. P1186	

**P&ID**

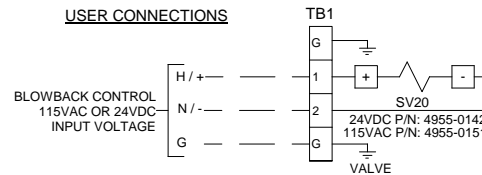


Item	Qty	Description	UAI Part No.
SV20	1	Solenoid Valve 3-Way SS 150P.S.I. 24VDC	4955-0142
SV20	1	Solenoid Valve 3-Way SS 150P.S.I 115VAC	4955-0151
CV	1	Check Valve	4955-0148

**WIRING SCHEMATIC (HEATED ENCLOSURE)**



**WIRING SCHEMATIC (NON-HEATED ENCLOSURE)**



**CONDUIT AND WIRING NOTES**

- Electrical Classification : Inside - General Purpose  
System is configured at the factory for required voltage. Contact factory for voltage change requirements.
- AC Wiring shall be individual conductors of stranded tinned copper with 300V, Type TFE Insulation. Minimum wire size shall be 18 AWG unless otherwise specified. Color Code Shall be as follows: Hot - Black L1 - Brown  
Common - White L2 - Blue  
Ground - Green G - Green  
115VAC 230VAC
- DC Wiring shall be individual conductors of stranded tinned copper with 300V, Type TFE insulation. Minimum wire size shall be 22 AWG unless otherwise specified.

----- WIRE -----  
FIELD TO WIRE

<b>UNIVERSAL ANALYZERS INC.</b>		A	11/13/07	REVISE QUICK CLAMP	EM	GE
1701 South Sairo Terrace Carson City, Nevada 89706 USA		REV	DATE	DESCRIPTION	DWN	APVD
MODEL 271 P&ID AND WIRING SCHEMATIC		REVISIONS				
PART NO. NOT ISSUED	FOR INSTRUMENT	DATE 06/06/2007	SCALE NTS	SIZE D	SHEET 2 OF 3	
DRAWN BY E. Musselman		APVD BY G. Evans		DRAWING NO. P1186		

**EXPLODED PROBE INSTALLATION  
TIP FILTER REPLACEMENT SCHEME**

TIP FILTER ASSEMBLY  
REPLACEABLE  
ELEMENT ASSEMBLY  
REFER TO DRAWING  
P0760

CUSTOMER TO DETERMINE  
SHIELD - PROBE TIP FILTER  
2" Ø SS TUBE  
WILL FIT THROUGH 2" & LARGER  
PIPE AND FLANGE ASSEMBLIES

QUICK CLAMP  
ASSEMBLY  
P/N 5155-0723

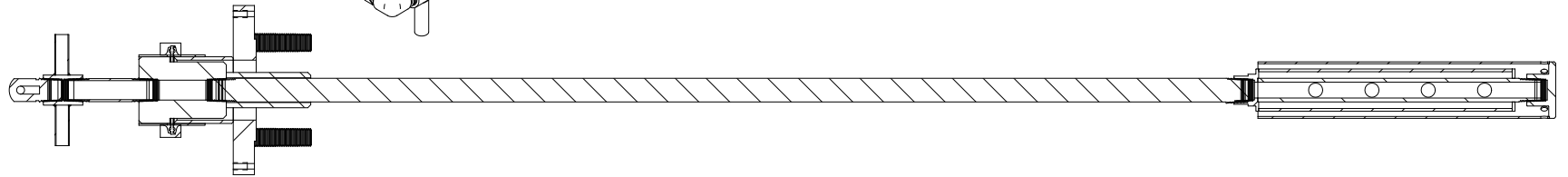
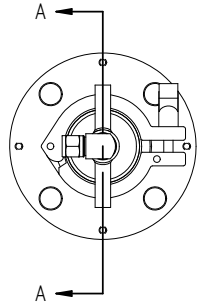
GASKET  
P/N 5155-0725

PROBE SUPPORT  
COLLAR  
P/N 5155-0237

FLANGE ASSEMBLY WITH STATIONARY  
QUICK CLAMP FITTING  
P/N 5515-0417

REMOVABLE  
QUICK CLAMP  
PROBE ASSEMBLY  
P/N 4900-0011

CAP FITTING FOR SEAL  
WHEN REPLACING TIP  
FILTER  
P/N 5209-0367



SECTION A-A

<b>UNIVERSAL ANALYZERS INC.</b> 1701 South Sairo Terrace Carson City, Nevada 89706 USA		A	11/13/07	REVISE QUICK CLAMP	EM	GE
MODEL 271 PROBE FILTER ASSEMBLY		REV	DATE	DESCRIPTION	DWN	APVD
PART NO. NOT ISSUED		DATE		REVISIONS	SHEET 3 OF 3	
FOR INSTRUMENT		06/06/2007	SCALE NTS	SIZE D	DRAWING NO. P1186	
		DRAWN BY E. Musselman	APVD BY G. Evans			