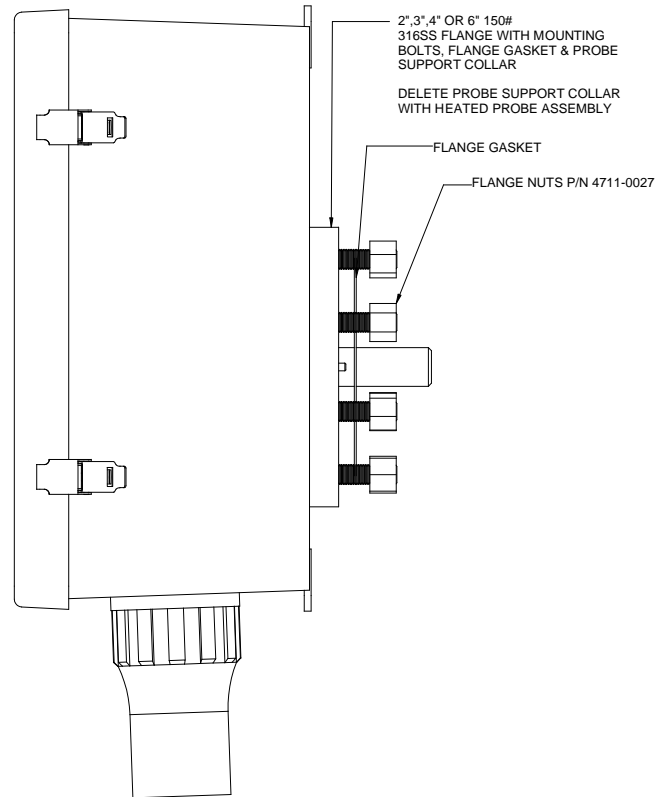


FRONT VIEW (DOOR REMOVED)



RIGHT SIDE VIEW

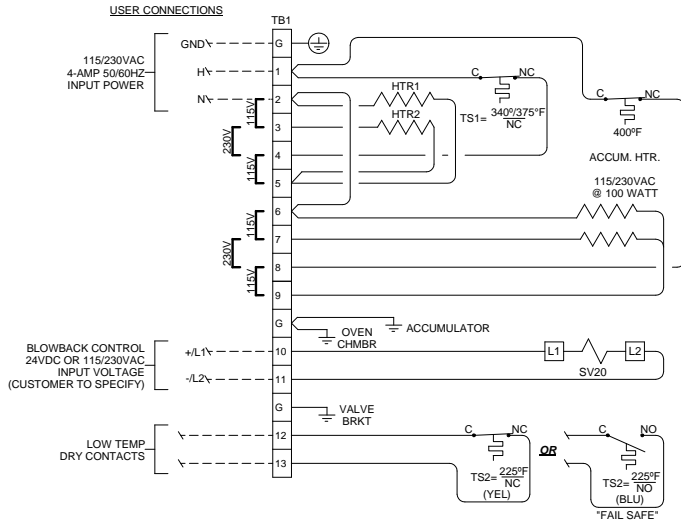
18" X 16" X 8" FIBERGLASS P/N 5023-1008
OR
20" X 16" X 8" 304 STAINLESS STEEL P/N 5023-0204
ENCLOSURE

OPTIONAL
1/2" SOLIMIDE INSULATION
P/N 8001-0028
(ENTIRE INTERIOR OF ENCLOSURE)

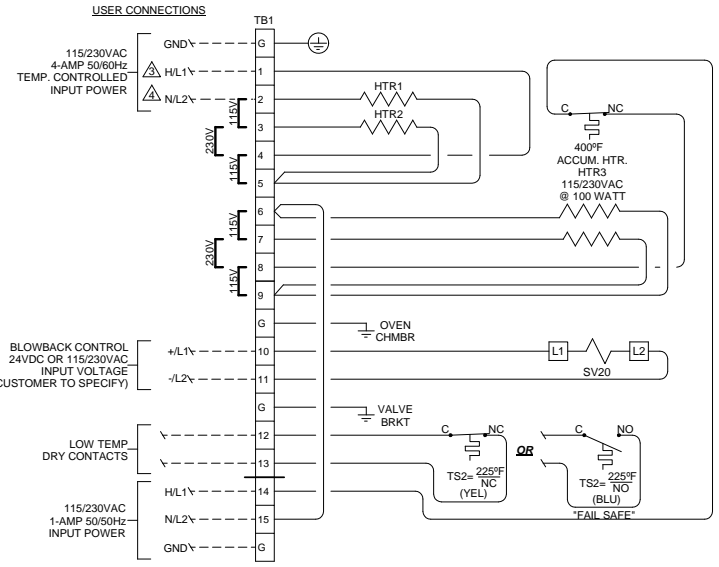
| SPARE PARTS LIST | | |
|------------------|-----------------------|------------|
| REQ'D | DESCRIPTION | U.A.I. P/N |
| 1 | KNOB O-RING VITON | 4904-0016 |
| 2 | FILTER O-RING VITON | 4904-0015 |
| 1 | CHECK VALVE | 4955-0148 |
| 1 | SOLENOID VALVE (24V) | 4955-0010 |
| | SOLENOID VALVE (115V) | 4955-0002 |
| | SOLENOID VALVE (230V) | 4955-0005 |
| 1 | ACID BLOCKER | 5110-0015 |
| 1 | 8" HTD. ACCUMULATOR | 4956-0009 |

| | | | | | | | | | |
|---|-----|------------|------------|--|----------|-------------|-------|-------|--------|
| UNIVERSAL ANALYZERS INC. 1701 South Suro Terrace Carson City, Nevada 89706 USA | | G | 04/08/08 | REVISE ENCLOSURE ADD FLANGE NUTS GASKET AND PART NUMBERS | EM | GE | | | |
| | | REV | DATE | DESCRIPTION | DWN | APVD | | | |
| MODEL 270 S/C F-HBB-FG(I)/SS(I) LAYOUT AND WIRING SCHEMATIC | | DATE | 06/23/2006 | SCALE | NTS | SIZE | D | SHEET | 1 OF 4 |
| PART NO. | FOR | DRAWN BY | R. Wells | APVD BY | G. Evans | DRAWING NO. | P1082 | | |
| Not Issued | | INSTRUMENT | | | | | | | |

THERMAL SWITCH TEMPERATURE CONTROL



REMOTE TEMPERATURE CONTROLLER

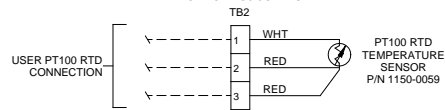


NOTES:

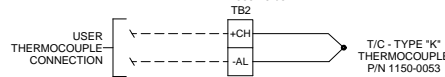
- 1) FILTER HEATER ROD SPECIFICATIONS (HTR1 & HTR2):
3/8" Ø X 1.5" LG @ 63 WATT/115VAC - U.A.I. P/N 3014-0046
- 2) LOW TEMP ALARM OPTIONS (TS2):
YELLOW (YEL) - NORMALLY CLOSED (NC) BELOW 225°F - U.A.I. P/N 3103-0013
BLUE (BLU) - NORMALLY OPEN (NO) BELOW 225°F - U.A.I. P/N 3103-0012
- ⚠ USER CHAMBER HEATER CONTROL OPTION (TB1-1) MUST BE REGULATED WITH A TEMPERATURE CONTROLLING DEVICE. VERIFY THAT THE VOLTAGE BEING SUPPLIED MATCHES THE VOLTAGE RATING ON THE SERIAL TAG.
- ⚠ USE LABEL 5001-0217. ADHERE TO BACKPLATE AND INSTALL ACROSS FROM TB1, TB2.
- 5) ACCUM. HEATER SPECIFICATIONS:
8" HEATED ACCUMULATOR - P/N 4956-0009
- 6) SYSTEM IS CONFIGURED AT THE FACTORY FOR REQUIRED VOLTAGE - CONTACT U.A.I. FOR VOLTAGE CHANGE.

--- FIELD TO WIRE ---

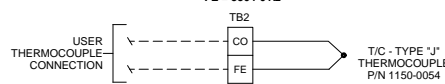
**OPTIONAL
PT100 RTD FOR REMOTE FILTER
HEATER TEMPERATURE
MONITORING / CONTROL**



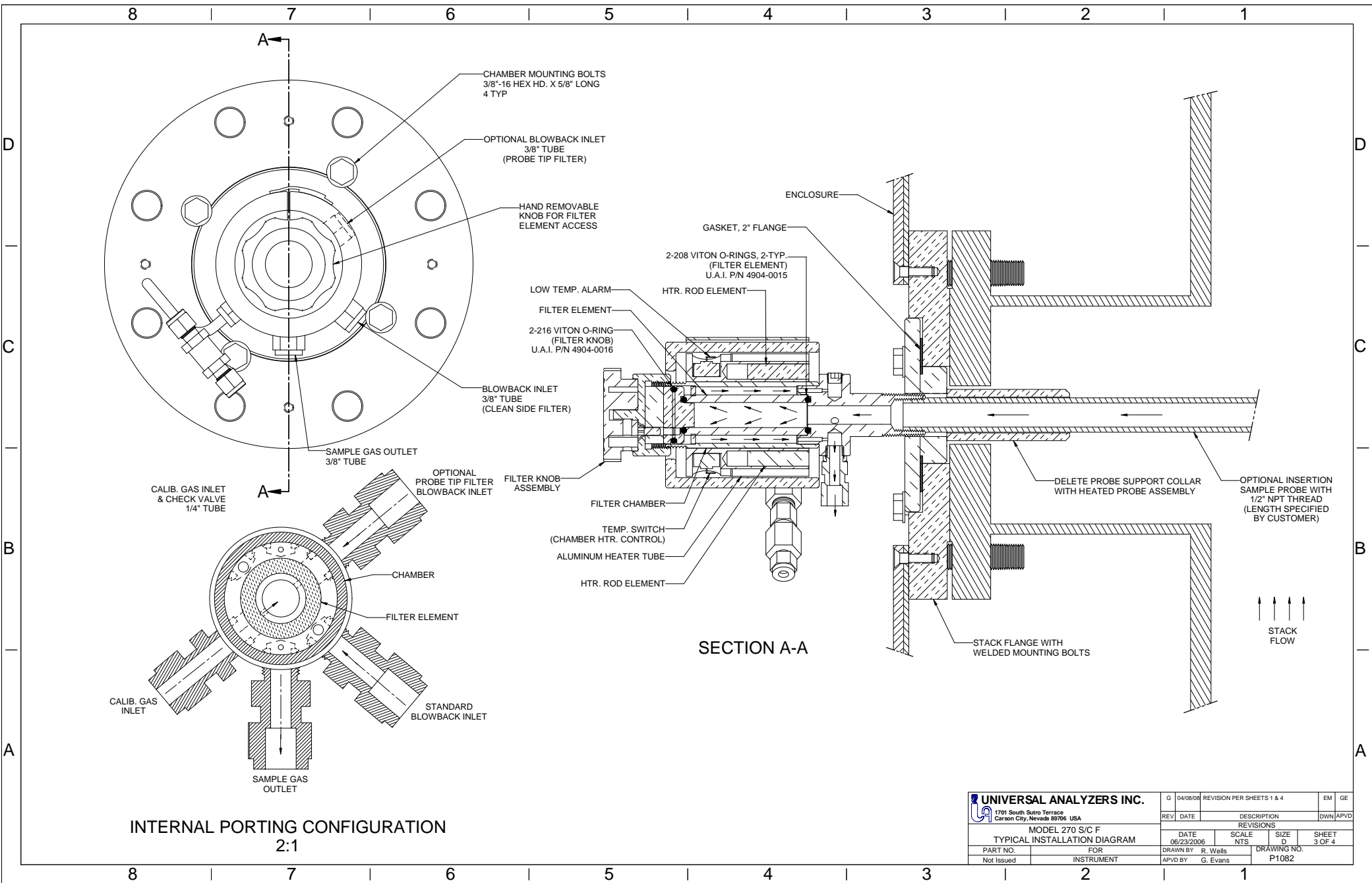
**THERMOCOUPLE FOR REMOTE
FILTER HEATER TEMPERATURE
MONITORING / CONTROL
TERMINAL BLOCK P/N
+CH = 3304-017
-AL = 3304-018**



**THERMOCOUPLE FOR REMOTE
FILTER HEATER TEMPERATURE
MONITORING / CONTROL
TERMINAL BLOCK P/N
CO = 3304-017
FE = 3304-012**



| | | | | | | |
|--|------------|------------|----------|---------------------------|--------|------|
| UNIVERSAL ANALYZERS INC. | | G | 04/08/08 | REVISION PER SHEETS 1 & 4 | EM | GE |
| 1701 South Suro Terrace Carson City, Nevada 89706 USA | | REV | DATE | DESCRIPTION | DWN | APVD |
| MODEL 270 S/C F OPTIONAL WIRING SCHEMATICS | | REVISIONS | | | | |
| PART NO. | FOR | DATE | SCALE | SIZE | SHEET | |
| Not Issued | INSTRUMENT | 06/23/2006 | NTS | D | 2 OF 4 | |
| | | DRAWN BY | R. Wells | DRAWING NO. | P1082 | |
| | | APVD BY | G. Evans | | | |



INTERNAL PORTING CONFIGURATION
2:1

SECTION A-A

| | | | | | | |
|--|--|----------|----------|---------------------------|----------------------|-------|
| UNIVERSAL ANALYZERS INC. | | G | 04/08/08 | REVISION PER SHEETS 1 & 4 | EM | GE |
| 1701 South Sutrro Terrace Carson City, Nevada 89706 USA | | REV | DATE | DESCRIPTION | DWN | APVD |
| MODEL 270 S/C F TYPICAL INSTALLATION DIAGRAM | | DATE | | REVISIONS | SCALE | SIZE |
| PART NO. | | DATE | | NTS | D | SHEET |
| FOR | | DRAWN BY | | R. Wells | 3 OF 4 | |
| INSTRUMENT | | APVD BY | | G. Evans | DRAWING NO. P1082 | |
| Not Issued | | | | | | |

8 | 7 | 6 | 5 | 4 | 3 | 2 | 1

D

C

B

A

D

C

B

A

2",3",4" OR 6" 150#
316SS FLANGE WITH
MOUNTING BOLTS

GASKET - 2" FLANGE
P/N 4903-1002

SUB-FLANGE - MODEL 270SF
WITH PROBE SUPPORT COLLAR
316SS P/N 5150-0230
C-276 P/N 5150-0277

DELETE PROBE SUPPORT COLLAR
WITH HEATER PROBE ASSEMBLY
316SS P/N 5150-0223
C-276 P/N 5150-0276

FILTER CHAMBER ASSEMBLY
W/ "FAIL SAFE" (NO BELOW 225°F) LOW TEMP SWITCH - U.A.I. P/N 3014-0026
W/ "FAIL SAFE" (NO BELOW 225°F) LOW TEMP SWITCH - FM - U.A.I. P/N 3014-0046
W/ (NC BELOW 225°F) LOW TEMP SWITCH - U.A.I. P/N 3014-0002
W/ (NC BELOW 225°F) LOW TEMP SWITCH - FM - U.A.I. P/N 3014-0047

WASHERS - 3/8" FLAT
P/N 4710-0043
4 TYP.

BOLTS - CHAMBER SUB-FLANGE RETAINING
3/8"-16 HEX HD. X 5/8" LONG
P/N 4704-0140
4 TYP.

| | | | | | | |
|--|------------|------------|----------|------------------|--------|------|
| UNIVERSAL ANALYZERS INC. | | G | 04/06/08 | ADD PART NUMBERS | EM | GE |
| 1701 South Suro Terrace Carson City, Nevada 89706 USA | | REV | DATE | DESCRIPTION | DWN | APVD |
| MODEL 270 S/C F FLANGE MOUNT ASSEMBLY | | REVISIONS | | | | |
| PART NO. | FOR | DATE | SCALE | SIZE | SHEET | |
| Not Issued | INSTRUMENT | 06/23/2006 | NTS | D | 4 OF 4 | |
| | | DRAWN BY | R. Wells | DRAWING NO. | | |
| | | APVD BY | G. Evans | P1082 | | |

8 | 7 | 6 | 5 | 4 | 3 | 2 | 1