

8

7

6

5

4

3

2

1

D

D

C

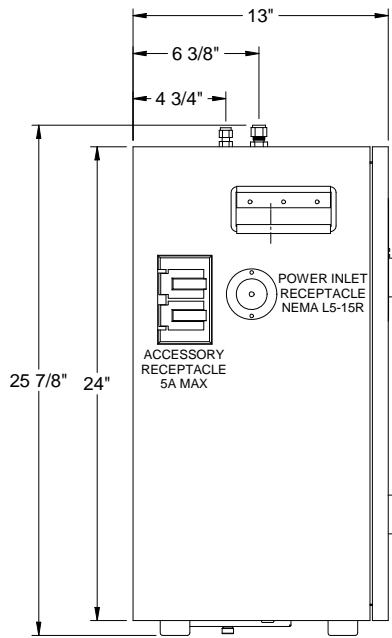
C

B

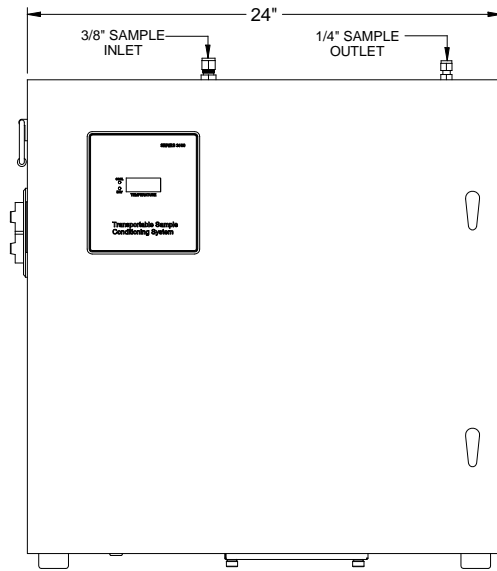
B

A

A

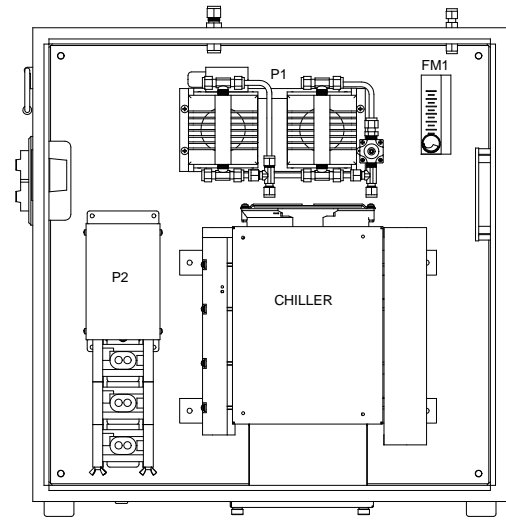


LEFT SIDE

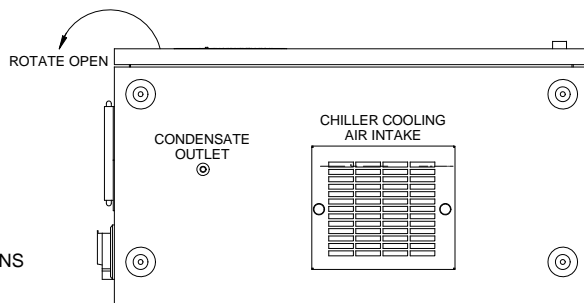


FRONT VIEW

EXHAUST VENT



FRONT VIEW (DOOR REMOVED FOR CLARITY)



BOTTOM VIEW

NOTES:

- ARRANGEMENT WILL VARY ACCORDING TO OPTIONS CHOSEN PER SALES ORDER.
- SEE SHEET 2 FOR P&ID.
- SEE SHEET 3 FOR WIRING SCHEMATIC.
- CHILLER BLOCK SHOULD BE PLUMBED & WIRED TO MAKE IT AN EASILY REMOVEABLE MODULE FOR IMPINGER SERVICING.
- ALL EXTERNAL COMPONENTS MUST BE SEALED TO ENCLOSURE WITH GASKETS, SEALS, OR CLEAR SILICON.

<b>UNIVERSAL ANALYZERS INC.</b>		L	03/20/08	Add Notes 4 & 5	RW	TM	
1701 South Sutor Terrace Carson City, Nevada 89706 USA		REV	DATE	DESCRIPTION	DWN	APVD	
MODEL 3100 SERIES SAMPLE CONDITIONING SYSTEM		REVISIONS					
PART NO. FOR		DATE	SCALE	SIZE	SHEET		
NOT ISSUED 3100 SERIES		05/19/1999	NTS	D	1 OF 3		
		DRAWN BY	E. Musselman		DRAWING NO.		
		APVD BY	R. Daniels		P0321		

8

7

6

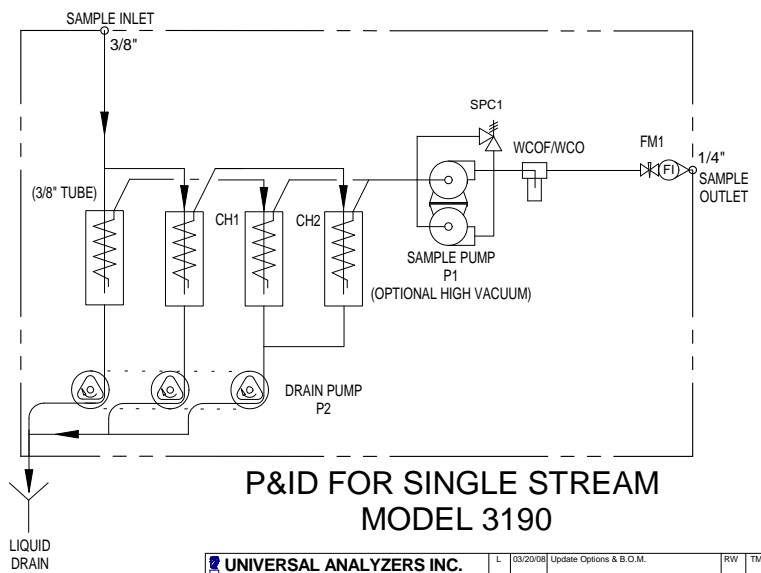
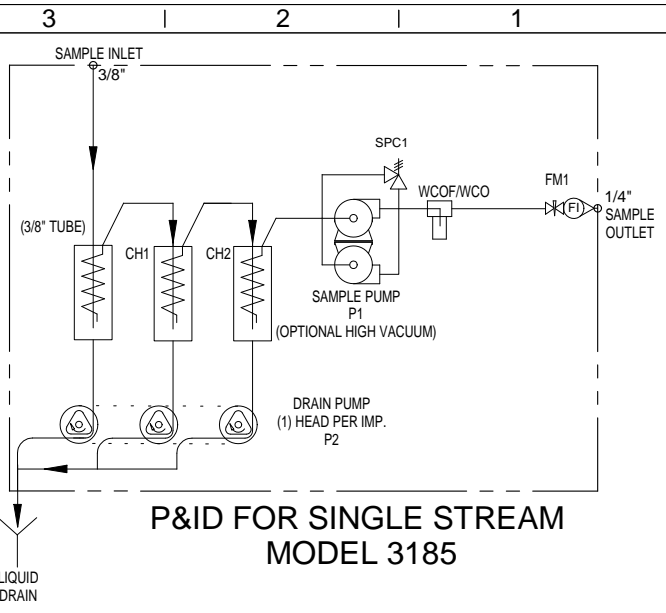
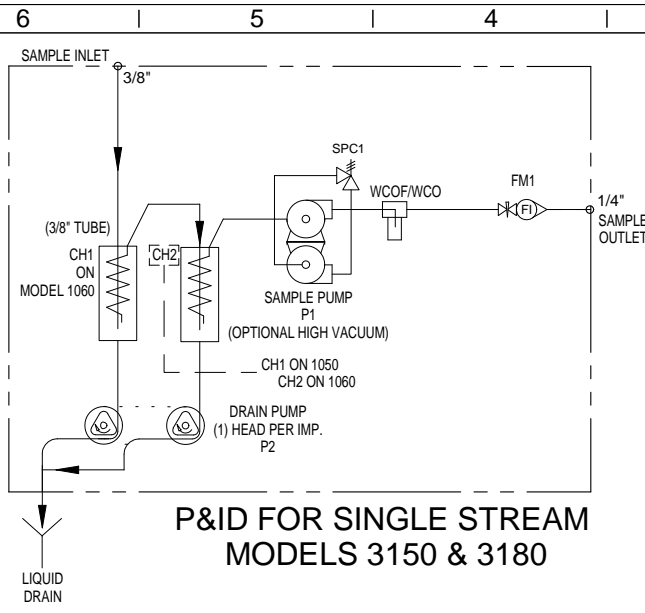
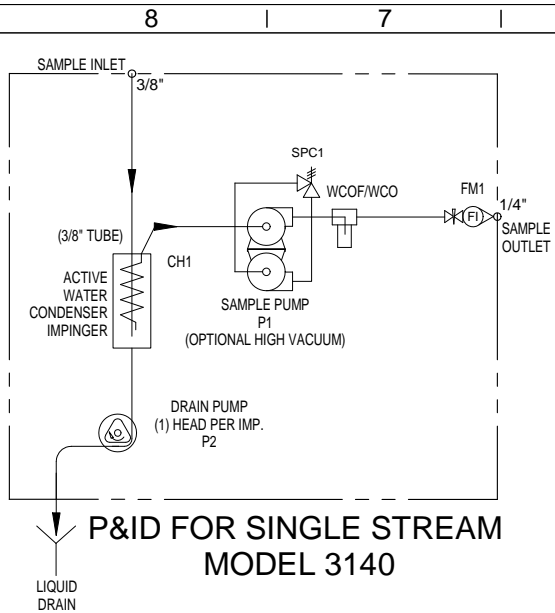
5

4

3

2

1



MODEL #	# OF IMPINGERS	# OF ACTIVE IMPINGERS	# OF SAMPLES
3140	1	1	1
3150	2	1	1
3180	2	2	1
3185	3	2	1
3190	4	2	1

- NOTES:
- 1). ALL COMPONENTS WETTED BY SAMPLE AND CALIBRATION GASES SHALL BE STAINLESS STEEL, BOROSILICATE GLASS, KYNAR, TEFLON OR VITON.
  - 2). SEE TABLE FOR MODEL # & CORRESPONDING IMPINGER LAYOUT.
  - 3). ALL FITTINGS ARE TO BE 1/4" COMPRESSION UNLESS OTHERWISE SPECIFIED.
  - 4). ALL COMPONENTS SHOWN ARE OPTIONAL UNLESS ORDERED, EXCEPT FM1, WHICH IS STANDARD.
  - 5). SAMPLE PRESSURE CONTROLLERS ARE SET @ 10 PSIG.

Item	Qty	Description	UAI Part No.
P1	1	Sample Pump - 115Vac Single Head	4958-0025
P1	1	Sample Pump - 115Vac Dual Head	4958-0026
P1	1	Sample Pump - 230Vac Single Head	4958-0015
P1	1	Sample Pump - 230Vac Dual Head	4958-0016
SPC1	1	Sample Pressure Control	4955-0246
WCOF	1	Water Carry Over Sensor 2µm Filtered	4980-0009
WCO	1	Water Carry Over	6020-0001
FM1	1	Flowmeter - W/Needle Valve 0-10l/m	4965-0007
P2	1	Peristaltic Drain Pump - 115Vac Single Head	4958-0011
P2	1	Peristaltic Drain Pump - 230Vac Single Head	4958-0013
P2	1	Peristaltic Drain Pump - 115Vac Dual Head	4958-0012
P2	1	Peristaltic Drain Pump - 230Vac Dual Head	4958-0035
P2	1	Peristaltic Drain Pump - 115Vac Triple Head	4958-0103
P2	1	Peristaltic Drain Pump - 230Vac Triple Head	4958-0108

**UNIVERSAL ANALYZERS INC.**  
 1701 South Sutor Terrace  
 Carson City, Nevada 89706 USA

3100 SERIES SYSTEM  
 P&ID

DATE: 05/19/1999  
 DRAWN BY: E. Musselman  
 APVD BY: R. Daniels

REVISIONS  
 DESCRIPTION  
 SCALE: NTS  
 SIZE: D  
 SHEET: 2 OF 3

DRAWING NO.: P0321

NOT ISSUED FOR 3100 SERIES

8 | 7 | 6 | 5 | 4 | 3 | 2 | 1

D

C

B

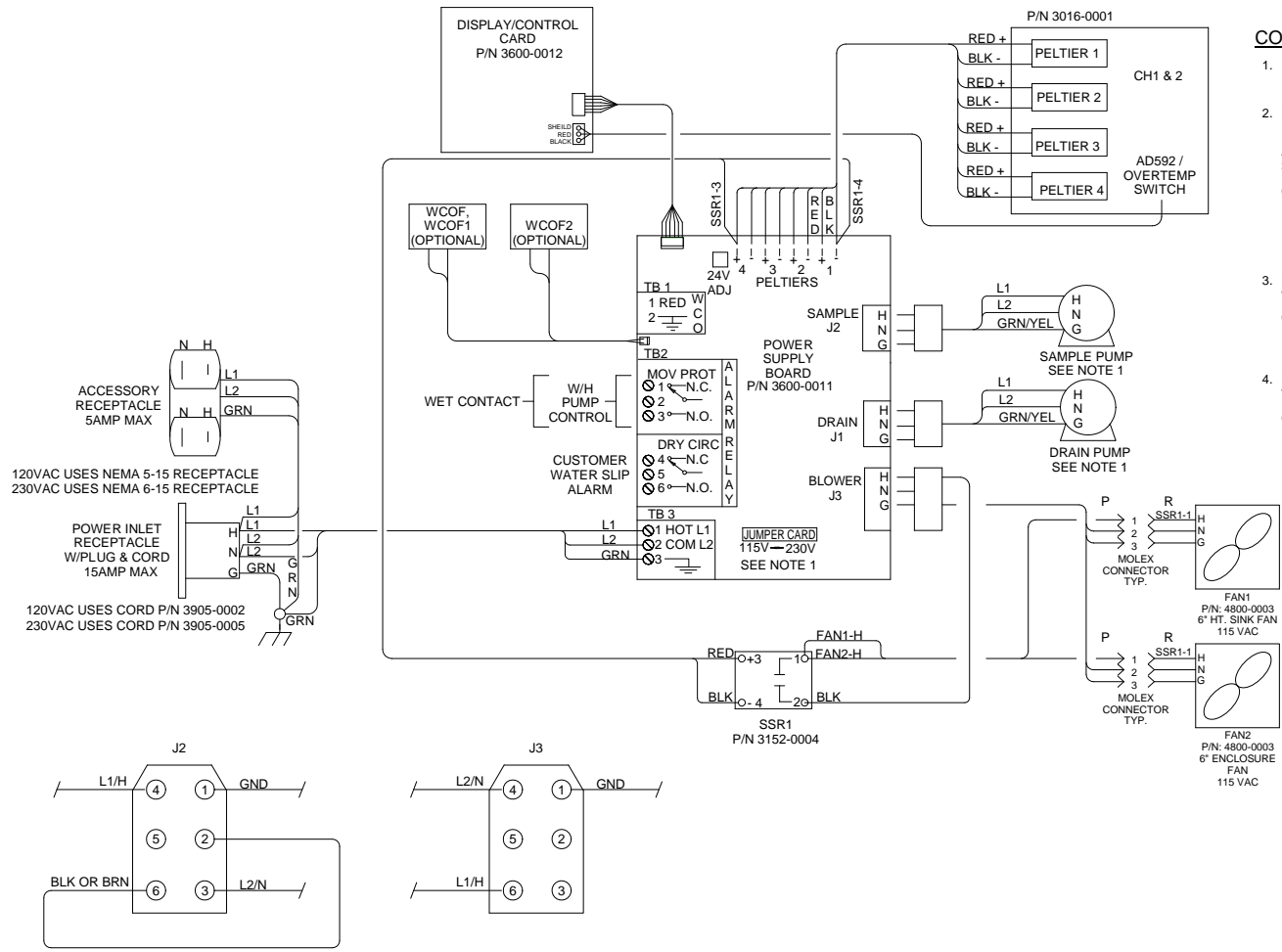
A

D

C

B

A



**CONDUIT AND WIRING NOTES**

- SYSTEM IS CONFIGURED AT THE FACTORY FOR REQUIRED VOLTAGE. CONTACT FACTORY FOR VOLTAGE CHANGE REQUIREMENTS.
- ELECTRICAL AREA CLASSIFICATION: OUTDOOR - GENERAL PURPOSE STANDARD MAX. AMBIENT - 105°F OPTIONAL MAX. AMBIENT - 122°F  
 AC WIRING SHALL BE INDIVIDUAL CONDUCTORS OF STRANDED TINNED COPPER WITH 300V, TYPE TFE INSULATION. MINIMUM WIRE SIZE SHALL BE 18 AWG  
 COLOR CODE SHALL BE AS FOLLOWS:  

115VAC SYSTEM	230VAC SYSTEM
HOT - BLACK	L1 - BROWN
NEUTRAL - WHITE	L2 - BLUE
GROUND - GREEN	GROUND - GREEN/YELLOW
- DC CONTROL WIRING SHALL BE INDIVIDUAL CONDUCTORS OF STRANDED TINNED COPPER WITH 300V, TYPE TFE INSULATION. MINIMUM WIRE SIZE SHALL BE 22 AWG.  
 COLOR CODE SHALL BE AS FOLLOWS:  

115VAC SYSTEM	230VAC SYSTEM
+ RED	+ RED
- BLUE	- BLACK
- DC SIGNAL WIRING SHALL BE INDIVIDUAL CONDUCTORS OF STRANDED TINNED COPPER WITH 300V, TYPE TFE INSULATION. MINIMUM WIRE SIZE SHALL BE 22 AWG.  
 COLOR CODE SHALL BE AS FOLLOWS:  
 CONTROL - YELLOW  
 NEUTRAL - YELLOW

<b>UNIVERSAL ANALYZERS INC.</b> 1701 South Sutro Terrace Carson City, Nevada 89706 USA		L	03/20/08	Add Power Cord & Max. Ambient	RW	TM
REVISIONS		REV	DATE	DESCRIPTION	DWN	APVD
WIRING SCHEMATIC FOR 3100 SERIES SYSTEM		DATE	SCALE	NTS	SIZE	SHEET
PART NO.	FOR	DRAWN BY	E. Musselman	APVD BY	R. Daniels	DRAWING NO.
NOT ISSUED	3100 SERIES					P0321
						3 OF 3

8 | 7 | 6 | 5 | 4 | 3 | 2 | 1